



# Operationalizing Equity: Early Childhood Education & Care Action & Family Councils



- Governor’s Commission on Equitable Early Childhood Education and Care Funding issued report in March 2021
- The Commission recognized the need for a much more intentional focus on supporting racial equity in the way Illinois plans, funds, and operationalizes its early childhood education and care services

Equity  
Equity  
Equity  
Equity  
Equity

## Equity in the inputs

Parent, provider, and community voice in developing the policies and programs

## Equity in the outcomes

Eliminating gaps in kindergarten readiness

# Birth to Five Illinois

- Build capacity across the State to ensure existing and potential new services meet local needs
- Birth to Five Action Councils will work as partners with local community
- Kindergarten readiness
- Racial equity at the center



# Centering Family Voice

## Family Council

- Membership of approximately 15
  - 2 seats also dedicated for families on Action Council
- Diversity in families/caretakers
- Stipends provided

## Structure of Support

- State Level:
  - Family and Community Engagement Manager
  - Family and Community Engagement Coordinator
- Regional Level:
  - Regional Manager
  - Family and Community Engagement Coordinator



# Centering Family Voice

## Authentic Family Engagement

- Prioritizing racial equity and priority populations
- Family Engagement vs. Family Involvement
- Relationship/Trust Building
- Outreach/Recruitment/Communication



# Centering Family Voice

## Priority Populations

- Children of teen parents
- Children experiencing homelessness
- Children in families in poverty or deep poverty
- Children/families with child welfare involvement
- Children with disabilities
- Children of migrant or seasonal workers
- Families with low caregiver education attainment
- Families that face barriers based on culture, language, and religion
- Children of a parent or legal guardian with a disability
- Children/families with refugee or asylee status
- Children in families who face barriers due to immigration status
- Children who are impacted by parental involvement in the criminal justice system

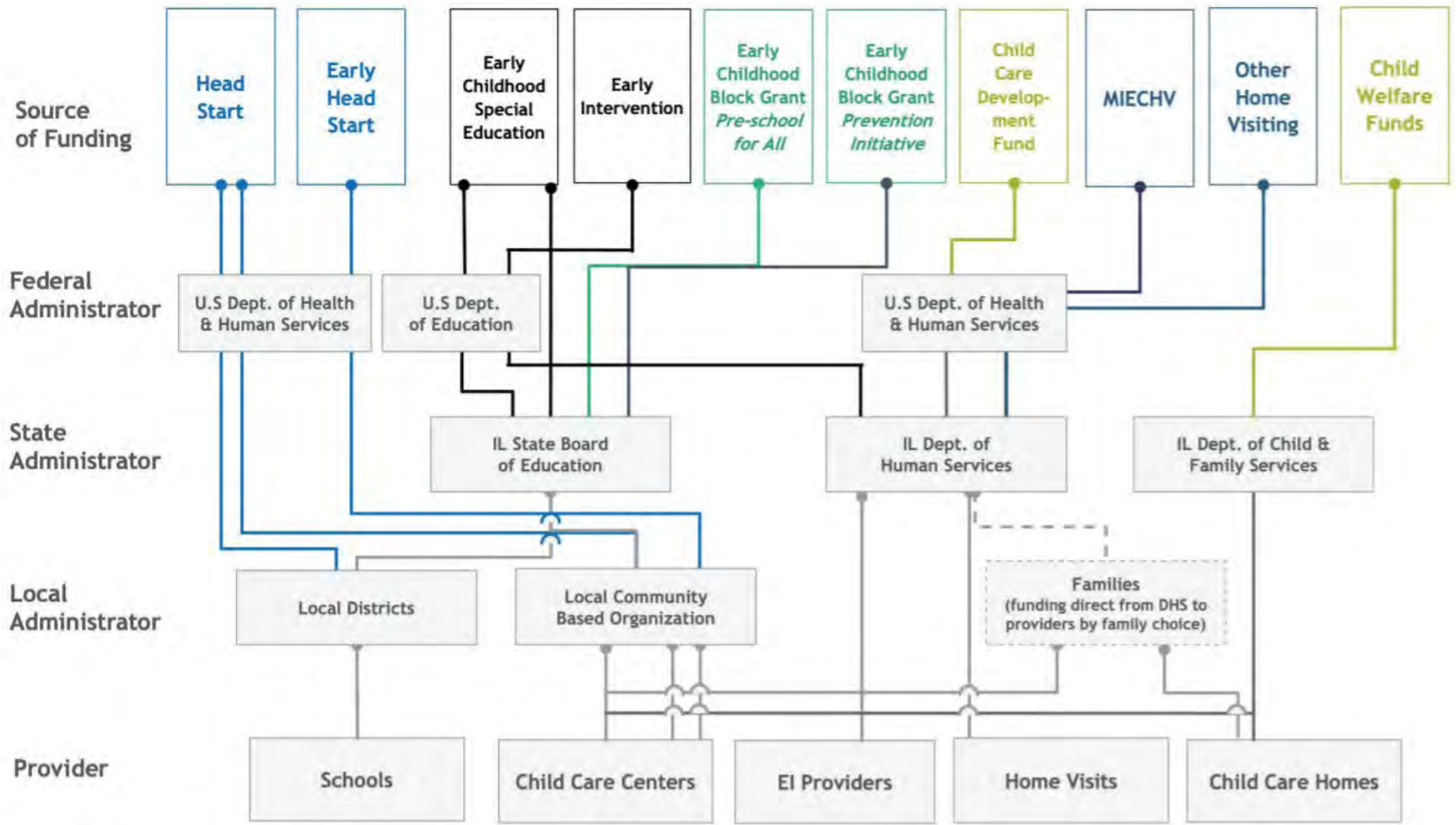


# The Need for a New Early Childhood Education & Care System

- Many funding streams
- Many sets of rules and regulations
- Many systems for compliance
- Difficult when systems use multiple funding streams and fall under multiple sets of rules







- Early Childhood Block Grant
- Head Start
- Child Care Subsidies
- Home Visiting
- ECSE / EI

# Role of Local Early Childhood Collaborations

## Leverage Resources & Supports for Families & Children

- Inform and educate parents about early childhood and community resources and services
- Connect and enroll families and children into programs and services

## Build Local Capacity

- Increase access and equity for all families and children to receive programs and services
- Identify gaps in early childhood resources and education

## Coordination

- Coordinate efforts to support efficiencies and achieve greater impact for families and their children

## THE SPARK EQUATION



# Q&A Panel



Thank you!

