

March 8, 2023

ACCELERATING EQUITABLE SUCCESS



ILLINOIS EDUCATION AND CAREER
SUCCESS NETWORK





10-Year Highlights

ACCELERATING EQUITABLE SUCCESS



2008



The Illinois P-20 Council sets a goal that **60% of all Illinois adults have a high-quality college degree or postsecondary credential by 2025**

Today, Illinois is at 56.9%





Network Organizers establish the Illinois 60 by 25 Network





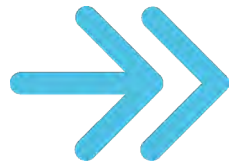
Network Goal is to support communities to increase meaningful and equitable postsecondary attainment





**We host the inaugural
conference in East Peoria**





We establish Leadership Communities and award the first spark grants



Leadership Communities

Aurora Regional Pathways to Prosperity

Black Hawk Region Pathways

Boone County

Chicago Public Schools

East St. Louis D189

Enlace Chicago

Evanston

Greater Peoria Pathways

Lake County

MORE in the Mississippi and Rock River Region

McLean County

NCI/Starved Rock Region

Northwest Educational Council for Student Success (NECSS)

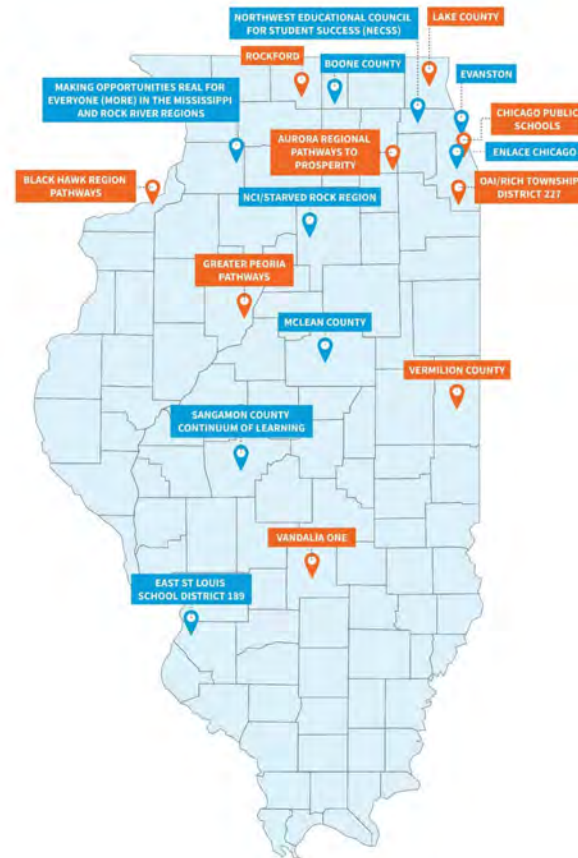
OAI/Rich Township District 227

Rockford

Sangamon County Continuum of Learning

Vandalia ONE

Vermilion County





**The Postsecondary and
Workforce Readiness Act is
signed into law**





We launch the Cradle to Career Community Dashboard





**We establish the
Guiding Team**



GUIDING TEAM

Stephanie Bernoteit, Illinois Board of Higher Education

Mara Botman, Vivo Foundation

Amy Jo Clemens, Center for P-20 Engagement at NIU

Chibuzo Ezeigbo, The Joyce Foundation

Jason Helfer, Illinois State Board of Education

Darryl Hogue, Riverbend School District

Jennifer Irvin, BJC Healthcare

Lisa Jones, Department of Commerce & Economic Opportunity

Sharon Kherat, Peoria Public Schools

Kim Korando, Illinois Student Assistance Commission

Pranav Kothari, Revolution Impact

Jason Leahy, Illinois Principals Association

Laz Lopez, District 214 & Illinois Community College Board

Alan Mather, Golden Apple Foundation

Travis McGuire, Hinckley-Big Rock CUSD #429

Charlie Moore, McLean County Chamber of Commerce

Margi Schiemann, Illinois Workforce Innovation Board & Nicor Gas

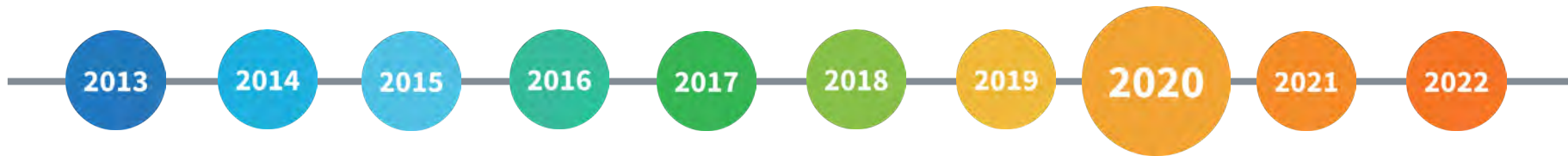
Audrey Soglin, Illinois Education Association (retired)

Susan Stanton, ACT Now

Sydney Stigge-Kaufman, East St. Louis District 189

Whitney Thompson, Illinois Community College Board

Vince Walsh-Rock, Illinois School Counselor Association

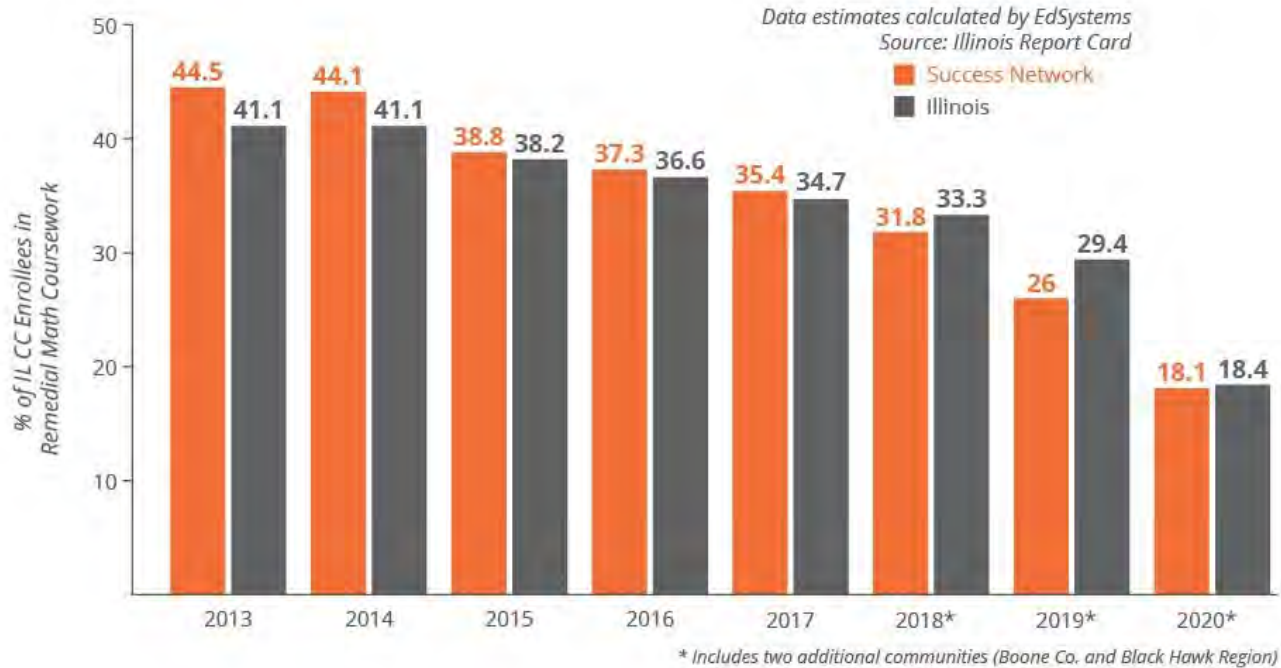


**Our 1st Impact Report shows
that Leadership Communities
are leading the way in policy
implementation**



Celebrating Student Success

Illinois Community Colleges remedial math enrollment fell at both the Network (-26.4% pts) and State (-22.7% pts) levels between the classes of 2013 and 2020



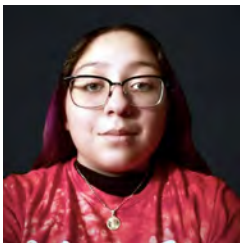


**We launch the
Student Advisory Council
to deepen our equity goal**

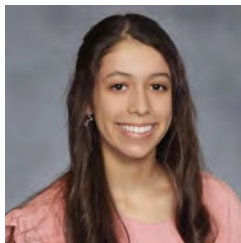




Jeremy Avan
East St. Louis
Sr. High School



Alex Casas
Mendota
Township High
School



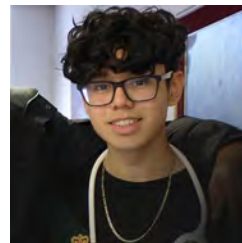
Isabelle Escatel
Mendota
Township High
School



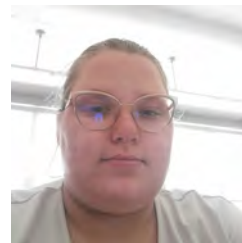
Cecelia Fumo
Auburn High
School



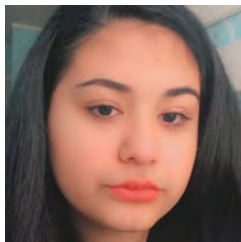
Olivia Hendrix
Belvidere North
High School



**Joshua
Hernandez**
Westinghouse
College Prep



**Jozlyn
Mahnesmith**
Rockford East
High School



Irais Montoya
Wheeling High
School



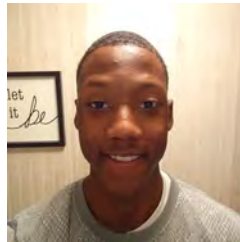
**Anusha
Nadkarni**
Bloomington
High School



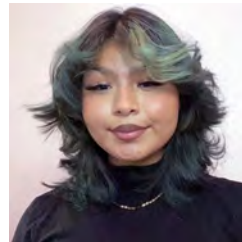
**Aline
Niyogusenga**
Rock Island High
School



Sestina Oduro
Southland
College Prep



Tristan Poplous
Danville High
School



Joanna Renedo
North Chicago
Community High
School



Qi Zhang
Adlai Stevenson
High School





**We rebrand as the
Illinois Education and Career
Success Network**





**500+ students in
Leadership Communities
earn the College & Career
Pathway Endorsement**





**We launch the
Policy Committee to
deepen the connection
between policy & practice**



Looking Ahead: Spring Webinars

April 10, 11 a.m

Lessons from the
Learner Voice about
the Student Success
Movement

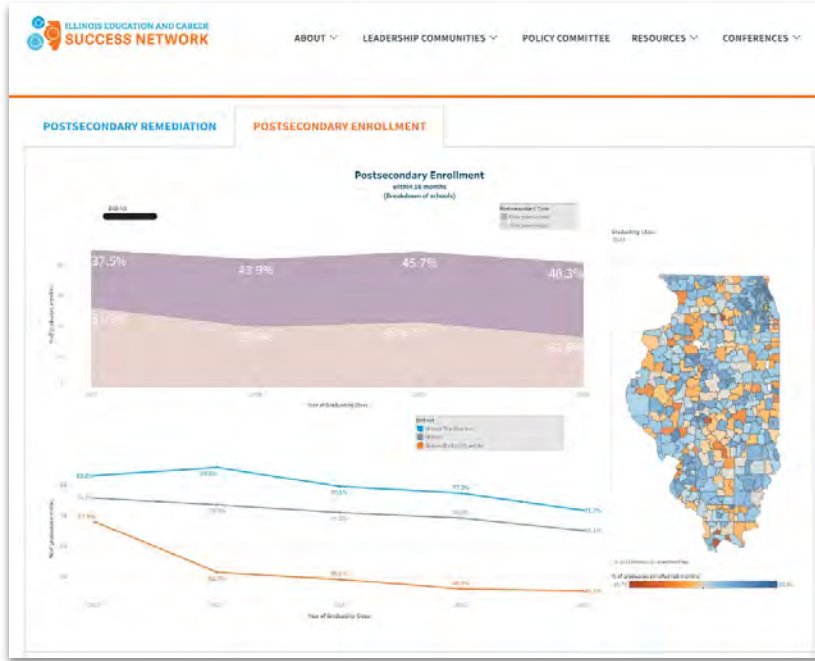
April 17, 11 a.m

Exploring Career
Pathways and
Essential Skills in
Today's Workforce

April 24, 10 a.m

OneGoal
Postsecondary
Leadership Network:
Closing the Gap for
Equitable Outcomes

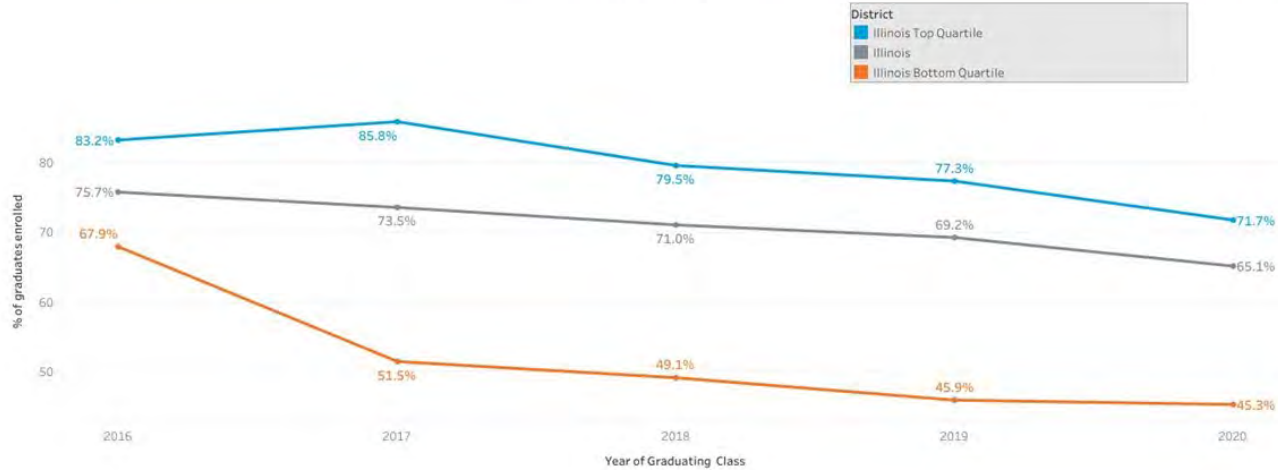
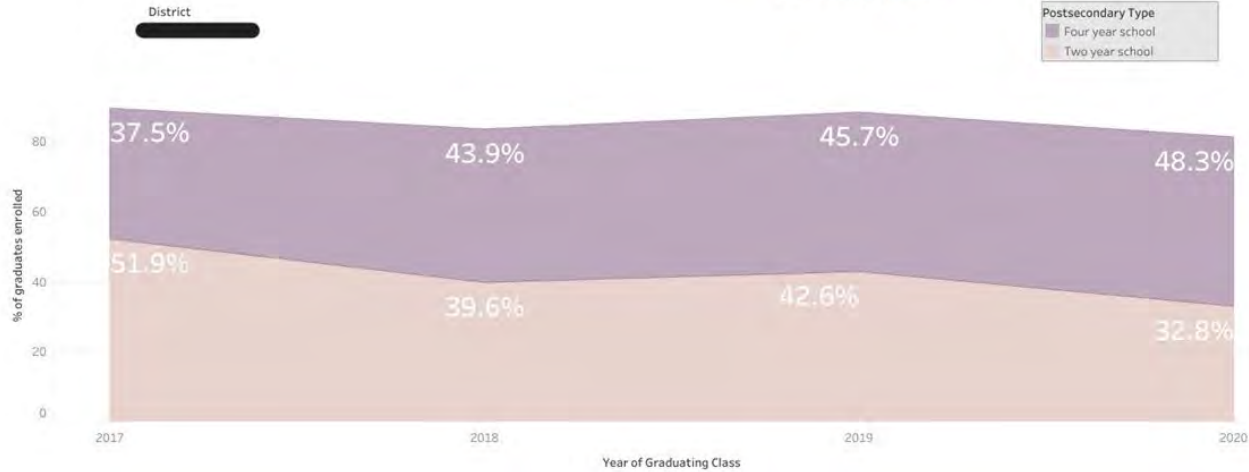
Looking Ahead: Dashboard 2.0 Launch



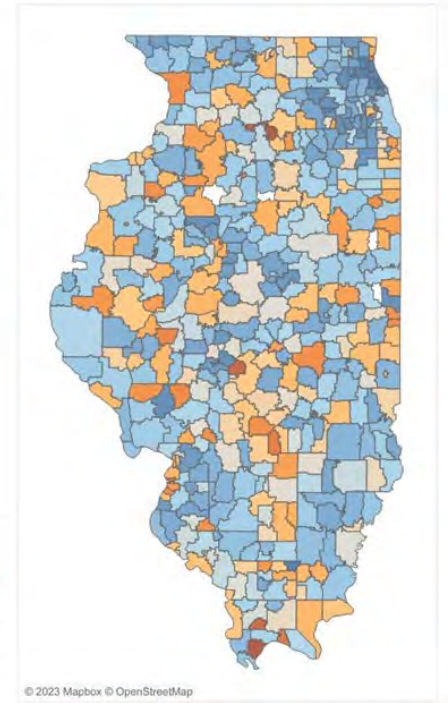
**Help communities
make data-
informed decisions**

Postsecondary Enrollment

within 16 months
(Breakdown of schools)



Graduating Class
2020



% of graduates enrolled (16 months)
16.70 92.60

Dashboard Timeline

Phase 1

Launching Soon!

- Postsecondary Remediation
- Postsecondary Enrollment

Phase 2

Summer 2023

- 9th Grade on Track
- Graduation Rate

Phase 3

Winter 2023-24

- Early College
- CTE

Looking Ahead



Continue supporting communities to work towards increasing meaningful and equitable postsecondary attainment