



ILLINOIS EDUCATION AND CAREER
SUCCESS NETWORK

Success Network Policy Committee

Q1 Meeting

March 23, 2023

Today's Topics

- Welcome
- Introductions
- Legislative Session Highlights
- Other Policy Updates
- Proposed Work Groups
- Jamboard Activity
- Wrap-Up & Announcements



Welcome & Introductions

Please share your name and organization in the chat, and:

What's one thing you look forward to in spring?

Who We Are



Emily Rusca

Director of State Policy & Strategy



Edith Njuguna

Director of the Illinois Education & Career
Success Network



Laura Monteagudo

Policy & Program Manager

Legislative Highlights

Addressing teacher pipeline challenges, including within pathways and Dual Credit

HR 62: Teacher Recruitment System

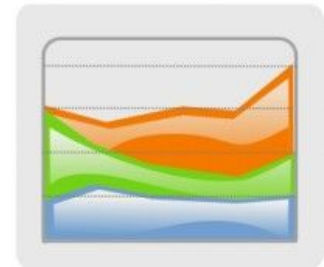
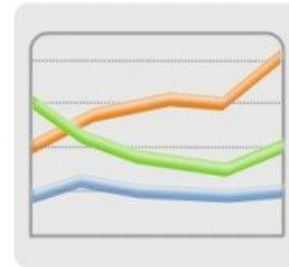
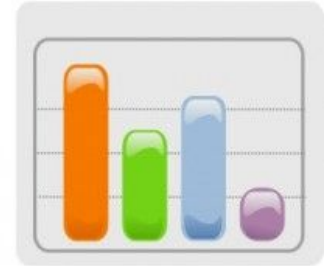
- Description:
 - Urges ISBE to support the state goal of increasing the number and diversity of Illinois' educator workforce by collaborating with the IBHE, the ICCB, and ISAC to develop and launch a statewide teacher recruitment system by July 1, 2024.

HB1213: Dual Credit Teacher Scholarships

- Description:
 - Creates the Teach Illinois Scholarship Program. This money can go to teachers working toward masters degrees for dual credit teaching credentials.
- Status: Passed out of committee

Enhancing data reporting to inform statewide equity work

- [SB 2031](#): Aims to include more disaggregated data on the Illinois School Report Card.
- [SB 2240](#): Starting with the 23-24 school year, each community college board will have to provide its member high schools with remediation data for their past students who have enrolled in the community college for any term.
- [SB 1356](#): Requires IBHE to annually publish an in-demand jobs list with starting salary, the median salary, and the typical education level for those jobs.



Exploring and addressing key barriers to work-based learning

- [HB 3590](#): School Career Development Insurance
- Description:
 - Originally required that ISBE in collaboration with agencies establish a system of providing liability insurance to cover public high school and community college students participating in career development experiences. Has been amended to convene a Student Career Development Liability Insurance Advisory Committee to issue a report including recommendations for providing liability insurance.
- [HB 3309](#): Transportation Challenges Report
- Description:
 - Likely to become a House Resolution, this bill pushes the IWIB to convene and work to identify strategies to address transportation access when trying to access career development experiences.

Advancing work to implement and scale regional manufacturing pathways systems

- [HB 3591](#): Manufacturing Academies
- Description:
 - HB 3591 requires that DCEO establish three additional advanced manufacturing training programs. The training programs must be led by community college(s) and be in consultation with regional partnerships, including manufacturers, to ensure that that the training offered aligns with the training needed by regional manufacturer employers.

Scale youth employment strategies

- [HB 3260](#): Future Through Employment Young Adults Program
- Description:
 - Establishes a Future Through Employment for Young Adults Program, under DCEO, to award grants to nonprofit entities. Those organizations will use the money to train young adults for the workforce and to place them in jobs with partners in the private and public sectors, including a school-year program and a summer program.

Status: Amendment to direct to Office of Firearm Violence Prevention; deadline extended



Scale Computer Science coursework and pathways

[HB1378](#): Graduate and Retain Our Workforce Act

- Description:
 - Establishes the GROW Illinois Program, in which public institutions of higher education award incentive loans to applicants. ISAC may, each year, administer applications for assistance under the GROW Illinois Program. Sets forth qualifications for recipients, degrees, and jobs.
 - Passed out of committee and amended to include a name change to iGROW.

[SB2374](#): Computer Science Grants

- Description:
 - Requires ISBE to establish a competitive grant program to support the development or enhancement of computer science programs in the K-12 schools. This grant would be available to regional offices of education, intermediate service centers, State higher education institutions, schools designated as laboratory schools, and school districts.
 - Passed out of committee

Changes to graduation requirements

- [HB 1375](#): Financial Education
- Description:
 - This bill swaps the consumer education requirement for a financial education course.
- Status: Passed out of committee and has been amended to extend the timeline for implementation.

Note: There were also a few attempts this session to eliminate or adjust the foreign language graduation requirement, but those have been unsuccessful



Smooth postsecondary transitions and transfer

HB 3760: Uniform Admissions

- Description:
 - Beginning with the 2024-2025 academic year, each institution shall create a 4-year uniform admission system pilot program to admit community college transfer students.
- Passed out of committee

SB 2288: Amends IAI

- Description:
 - Requires that all public institutions' Illinois Articulation Initiative major courses must be transferable as direct course equivalents toward the requirements of the major. The bill also calls for elementary and secondary education panel shall be convened by IBHE and ICCB.
- Passed out of committee



Discussion

Have you been involved with any of these bills?

What are your reflections on these pieces of legislation?

What else have you been tracking?

Other Policy Updates

Emerging Dual Credit Rules & Policy (HLC & ICCB)

What are they?

- ICCB has issued rules for implementation of the Dual Credit Quality Act (DCQA) Amendment passed last year
- Higher Learning Commission has proposed updated policy around faculty qualifications

What will they do?

- Address teacher pipeline challenges through re-considering faculty qualifications & scaling Professional Development Plans (PDPs)
- Address scheduling challenges by opening opportunity for mixed enrollment

What's next?

- Potential for ICCB to re-convene DCQA Model Partnership Agreement workgroup to develop new exhibits for mixed enrollment
- Desire from the field for clear guidance for implementation of mixed enrollment, PDPs, and “equivalent experience” components
- Lift up local models of effective practice

Illinois Career Pathways Dictionary Updates

What?

- An interactive web-based resource with short printable documents integrated throughout
- Clarification on Career Pathways
- Updates to Work-Based learning and continuum elements definition
- Updating definitions and adding terms to reflect what is happening in the field

When?

- Aiming to publish by summer 2023

Why?

- It has been five years since the initial publication of the dictionary.
- To meet and support implementation and scaling needs that have arisen both naturally and through legislative action.
- To reflect evolving best practices

Updates to PaCE

Current Work

- **Feb-March:** ISBE has submitted the frameworks for public comment as part of their process.
- **Remainder of March**
 - ISBE will review the feedback
 - ISBE and ISAC will meet to go over feedback
- **April:** ISAC will send out updated frameworks to submit to boards

Board/Commission Approvals:

- **April- June** ISAC, ISBE, ICCB, IBHE will submit to their boards for approval.
- HB3296 requires ISAC to get this approved by July 1st 2023



Illinois PaCE Postsecondary and Career Expectations

Each student should have an individualized learning plan to help make decisions about career and post-secondary (PS) education or training, to plan a course of study, and to make financial aid assessments with family members.

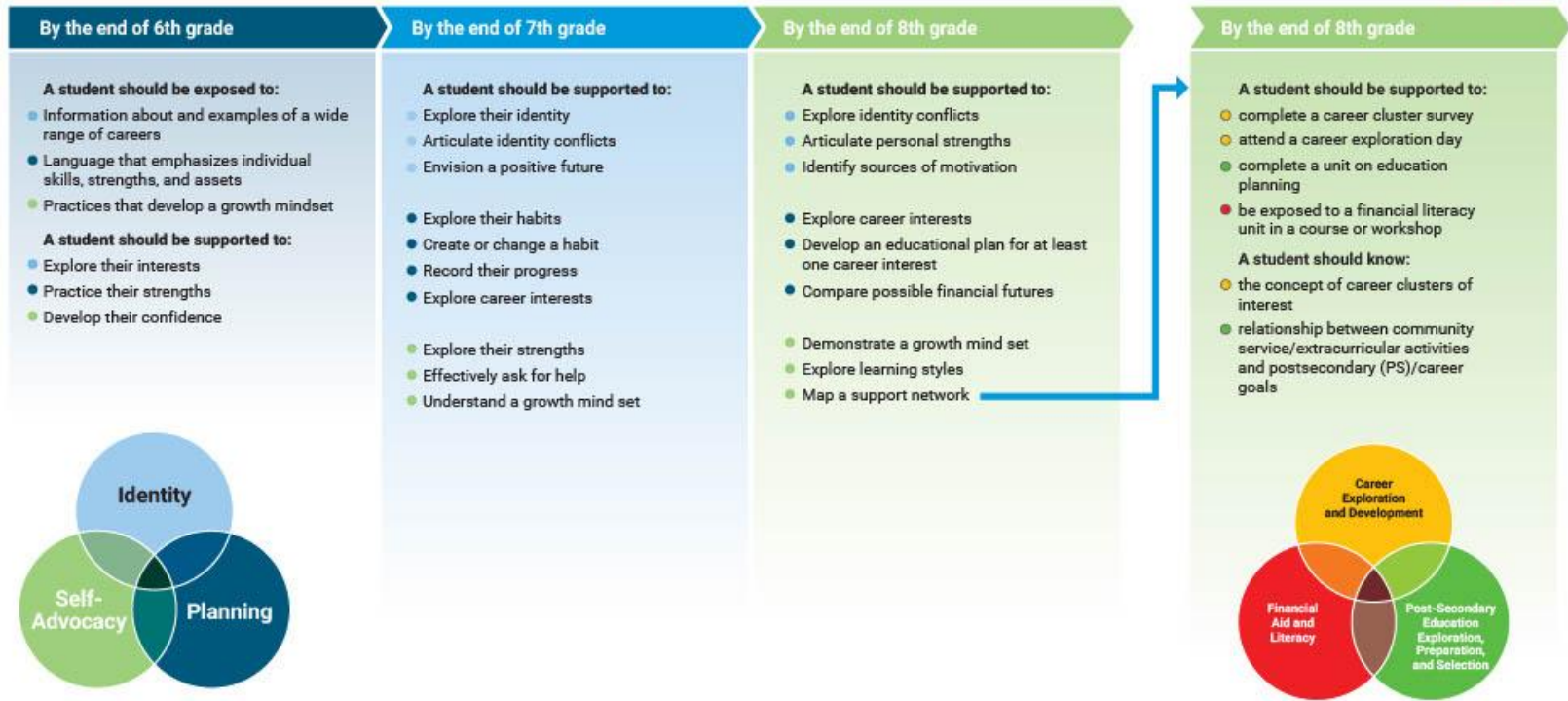


| By the end of 8th grade | By the end of 9th grade | By the end of 10th grade | By the end of 11th grade | By the end of 12th grade |
|--|--|---|---|---|
| <p>A student should be supported to:</p> <ul style="list-style-type: none"> complete a career cluster survey attend a career exploration day complete a unit on education planning be exposed to a financial literacy unit in a course or workshop <p>A student should know:</p> <ul style="list-style-type: none"> the concept of career clusters of interest relationship between community service/extracurricular activities and postsecondary (PS)/career goals | <p>A student should be supported to:</p> <ul style="list-style-type: none"> complete a career cluster survey complete a career interest survey attend a PS options workshop select course work for PS/career plans aligned with the ISBE College and Career Readiness Indicators enroll as appropriate in advanced placement (AP) courses outline a plan for community service and extracurricular activities related to PS plans attend a basic financial aid presentation with a family member <p>A student should know:</p> <ul style="list-style-type: none"> one or two careers for further exploration the relationship between HS coursework, attendance, and grades to PS plans importance of community service and extracurricular activities to PS and career plans general cost ranges of various PS options | <p>A student should be supported to:</p> <ul style="list-style-type: none"> visit at least one workplace aligned with career interests participate in activities related to their career cluster of interest explore career pathways (CP) connect and build relationships with 2-3 adults to support the PS and career selection process review coursework, and PS/career plans in relation to the ISBE College and Career Readiness Indicators (every year) attend a basic financial aid presentation with a family member <p>A student should know:</p> <ul style="list-style-type: none"> educational requirements, cost, expected entry level, and midpoint salary for occupations in selected CP skills related to career interests different types of PS credentials and institutions general timing of PS entrance exams and applications benefit of early college credit opportunities to PS access and completion | <p>A student should be supported to:</p> <ul style="list-style-type: none"> revisit the career interest survey participate in a mock job interview create a resume and personal statement explore the process of obtaining an industry-based credential related to CP if applicable determine readiness for college-level coursework in math/ELA and enrollment in either "catch up" or "speed up" course complete at least one early college credit opportunity attend a college fair visit at least 3 PS institutions take at least one college entrance exam Complete a Postsecondary Plan Workshop <p>A student should know:</p> <ul style="list-style-type: none"> application deadlines, test timing, cost, and preparation for industry-based certification for CP entrance requirements, including application deadlines, for expected PS programs of study 3-5 match schools, one safety, one reach school for PS program of study negative impact of remediation on PS goals financial aid deadlines for chosen PS options | <p>By the end of 12th grade a student should be supported to:</p> <ul style="list-style-type: none"> address any remedial needs in math/ELA obtain an internship opportunity related to the CP if applicable if applicable, receive industry-based certification(s) related to the CP complete a financial aid offer workshop <p>A student should know:</p> <ul style="list-style-type: none"> how CP courses and experiences articulate to degree programs at PS options estimated cost of chosen PS options affordability of PS options in relation to expected entry-level career salary and anticipated debt terms and conditions of any scholarship or loan <p>By 12/31 of 12th grade a student should have:</p> <ul style="list-style-type: none"> completed 3 or more admissions applications to PS institutions ensure all steps in the PS admissions process are completed on time attended a Financial Aid Application completion workshop completed a financial aid application |



Illinois PaCE Postsecondary and Career Expectations

At the middle school and early high school level, the Illinois Postsecondary and Career Expectations (PaCE) Framework is designed to provide students with guided exploration of postsecondary planning and options in a manner that is consistent with the developmental stage of each student. This developmental work is intended to prepare students to more fully engage with the PaCE Framework throughout the high school years.



Proposed Work Groups

Proposed Plan

Objective

To dive deeper into some of the topics that have emerged from previous meeting as common challenges that would benefit from further exploration.

The work groups will do so with the intention of compiling their findings into a report and offering recommendations.

Initial Topics

- ***Transportation for work-based learning***
- Professional Development Plans for dual credit

Questions

- Are these the right topics?
- Would you be interested in joining these groups?
- Are there other topics we should note for potential future groups?



Other Considerations

- Are there other stakeholders or workgroups already doing work related to these topics we should be coordinating with?
- Any resources we should be aware of?

Transportation Work Group

- Focus on supporting in-school youth
- Plan to meet 3-4 times
- Dive into access obstacles
 - Funding, Staffing shortage, policy barriers, etc.
- Aim to release a memo of findings and recommendations by August
- Sharing findings with P-20 Council, IWIB Career Pathways for Target Populations Committee, ISBE, etc

Interested in joining? Please drop your email in the chat!



Diving into Transportation for WBL

Activity Overview

We want to hear your thoughts in this [Jamboard](#) exercise!

- Add answers on post it notes for each question
- One idea per post it note
- Do not clear the frame
- Include all answers and ideas, even if they are similar to something that's been mentioned
- Be as specific as possible

Wrap-Up & Announcements



**Did we miss
anything?**



**What do you
want to know
more about?**



**What
should we
explore?**

Success Network Conference March 8 – Thanks for joining!



All conference materials and recordings are available on the [Success Network website.](#)

SPRING '23 WEBINAR SERIES

Join us for 3 free webinars to support accelerating equitable success:

APRIL 10: Lessons from the Learner Voice about the Student Success Movement
with the Bill & Melinda Gates Foundation

APRIL 17: Exploring Career Pathways and Essential Skills in Today's Workforce:
Connecting Education and Employers to Enhance the Student
Experience *with Sauk Valley Area Chamber of Commerce*

APRIL 24: OneGoal Postsecondary Leadership Network – Closing the Gap for
Equitable Outcomes *with OneGoal*



Also save the date for these other events!

Illinois PaCE Symposium

- When?
 - Thursday, April 20, 2023
 - 8:00 a.m. – 3:00 p.m
- Where?
 - Springfield, Illinois

College Changes Everything Conference

- When?
 - Thursday, July 13, 2023
- Where?
 - Tinley Park, Illinois

Both events will be back in person for 2023!



ILLINOIS EDUCATION AND CAREER
SUCCESS NETWORK

**Next meeting:
June 7, 9-10:30 am**

May be rescheduled due to possible conflict, but please [register](#) to stay in the loop.

Leadership Community Spotlight

We want to highlight your work! Please let us know if you are willing to share your innovative local practices in a future meeting.





ILLINOIS EDUCATION AND CAREER
SUCCESS NETWORK

Visit the [policy committee website](#) to:

- Register for future meetings
- View recordings of past meetings
- Opt-in to emails.



ILLINOIS EDUCATION AND CAREER
SUCCESS NETWORK

Thank You!

