



Illinois Career Pathways Dictionary 2.0

A Relunched Resource

Laura Monteagudo
EdSystems at NIU

Opening Activity



In your own words define:

Work-based learning

Take a moment to compare with your neighbor.

How did it go?

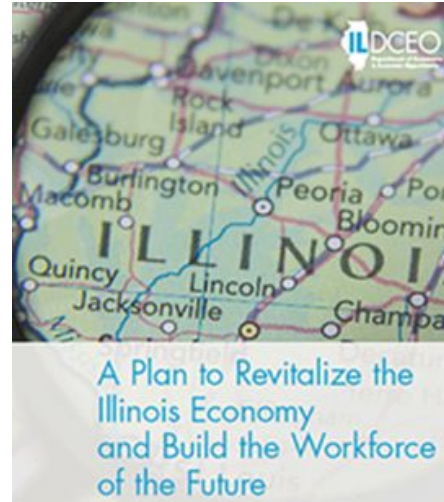
Today's Objectives

- Highlight the Career Pathways Dictionary and how it can be used by policymakers and practitioners
- Explore the new website
- Provide background information about how the Dictionary was developed and updated

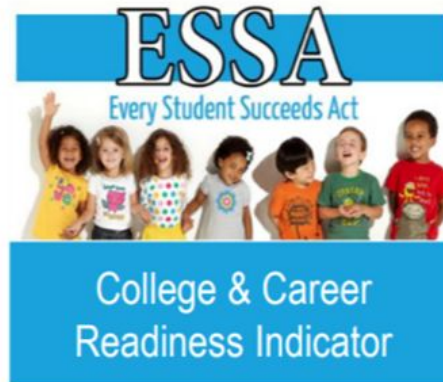
Where did this come from?

Origins of the Career Pathways Dictionary
and why relaunch 2.0

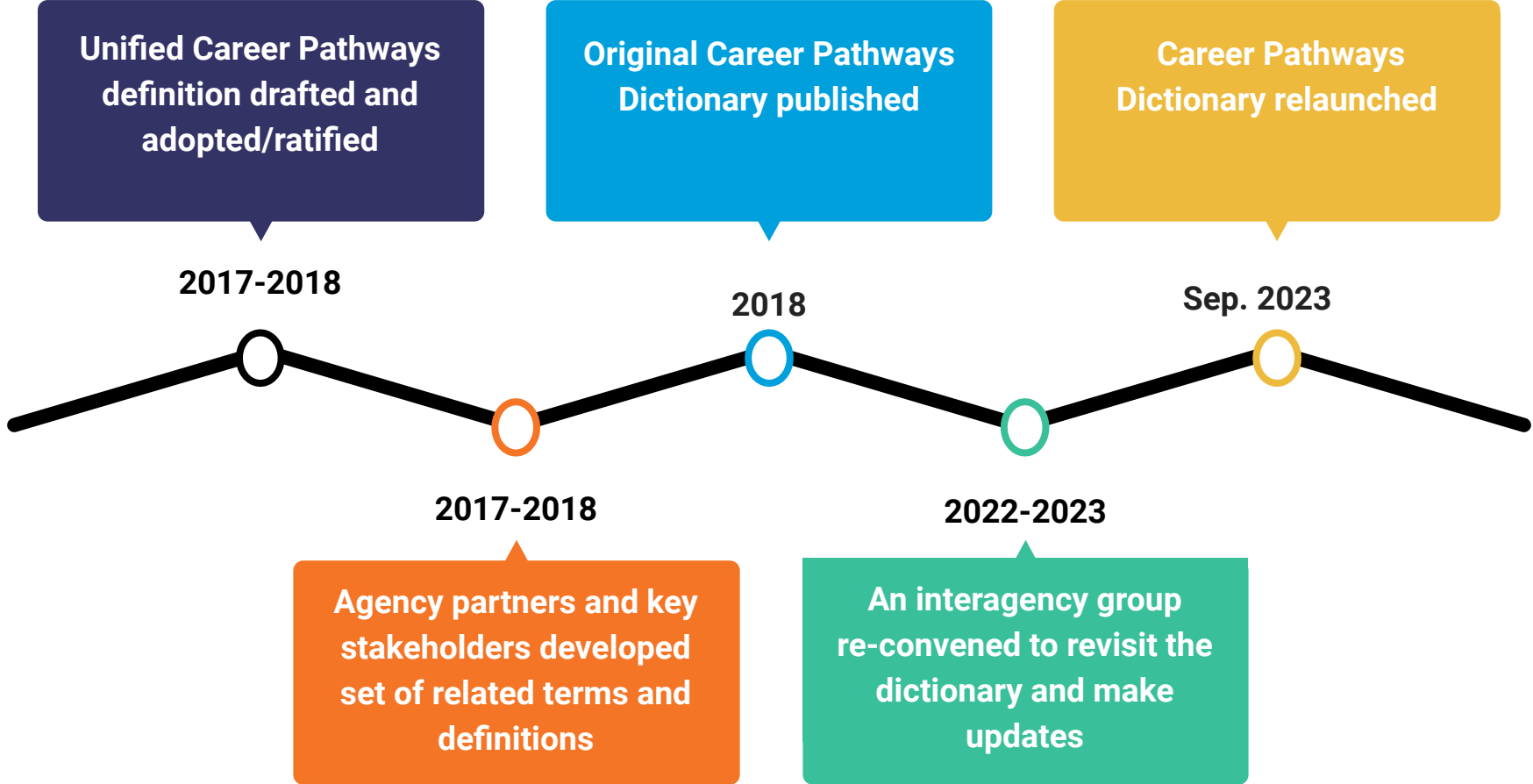
Seeding the Pathways through Policy



Illinois Career Pathways Dictionary



How was the Pathways Dictionary developed?



Career Pathway Dictionary 2.0

Process

- Conducted a survey to gain a deeper understanding of the dictionary's relevance and use in the field.
- Convened interagency group (DCEO, IDES, ISAC, ICCB, IBHE, and ISBE) to work through updates and updated design

Updates

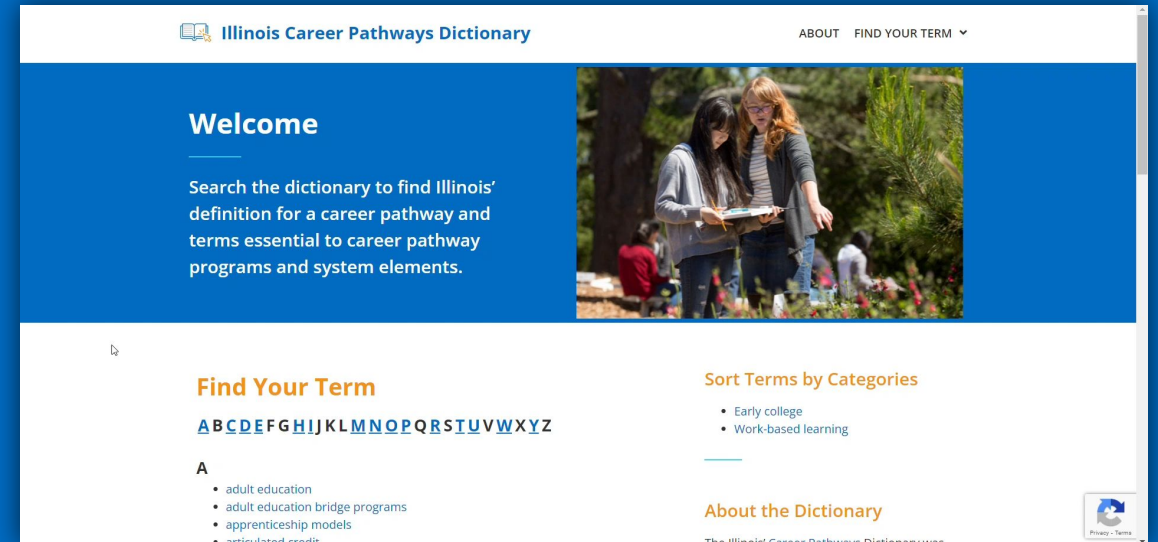
- Added new terms
- Updated definitions to reflect current best practices
- Embedded resources throughout
- Included source citation for each definition
- Added category feature
- Added option to sign up to be notified of future updates
- Increased ability to share and edit

Website Demo

Illinois Career Pathways Dictionary Relaunch

A first-of-its-kind resource for policymakers and practitioners, providing Illinois' definition for a career pathway and terms essential to pathway programs and system elements.

- First released in 2018 as a PDF
- Now relaunched as a stand-alone website at pathwaysdictionary.org
 - Includes new and updated definitions
 - Provides implementation guidance and resources



Next steps

What we plan to do

- Share extensively throughout Illinois via:
 - agency websites
 - word-of-mouth
 - professional development opportunities and conferences
- Tie to funding (e.g. NOFOs, RFPs, etc.)



Illinois Career
Pathways Dictionary

What you can do

- Share it with others as a helpful resource
- Incorporate it into your work! Examples of how include:
 - Developing local PaCE framework or CCPE implementation
 - PD and training for staff
 - Brainstorming and program design
 - Grant writing

Activity

Website Scavenger Hunt

Let's look through the website together!

- Each of the next few slides will have a prompt.
- Individually, we will take some time to look through the website for a term or page that fits the prompt.
- Discuss with your neighbor.
- For some prompts we will share out and discuss with the whole group.

Before we start by go to pathwaysdictionary.org



Find a term that is new to you.

Find a term that has a resource linked.

**Find a term that is relevant
to your role.**

**Find a term that offers
implementation guidance.**

Find a term that you often find yourself explaining.

Discussion

How have you
used the
Dictionary?

How do you
see yourself
using this new
version?

What kind of
support might
you want or
need?



ILLINOIS EDUCATION AND CAREER
SUCCESS NETWORK

Thank You!

