

Regional Collaboration for Student Success:

Authentic School and College Partnerships

Presented by:

Dr. Nancy Awdziejczyk, Executive Director - NECSS

Jennifer Greer, Early College Program Supervisor - D214

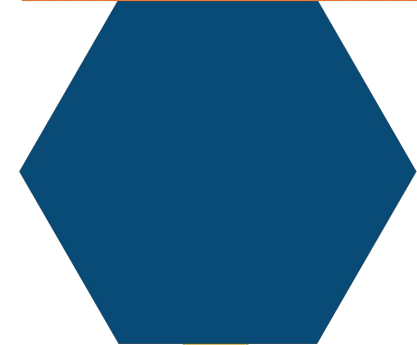
Kelly Hansen, Director of Secondary Education - D220

Michele Napier, Director of College and Career Readiness - D211

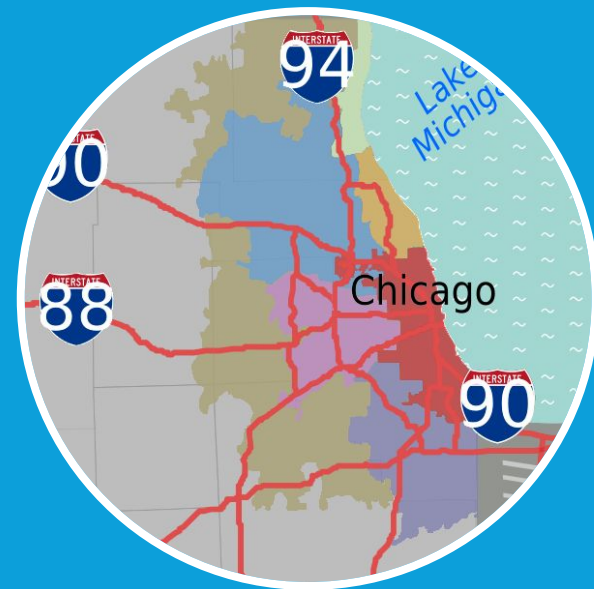
Kimberley Polly, Dean of Math and Science - Harper College

Sharon Rainbolt, Dual Credit Manager - Harper College

Dr. Jaime Riewerts, Dean of Liberal Arts - Harper College



OVERVIEW THE NECSS REGION





Communities Served

NECSS serves 23 communities in Chicago's northwest suburbs - 200 sq miles.

- 1 community college
- 12 high schools
- 19 middle schools
- 74 elementary
- 10 alternative/special ed schools

Harper Community College District 512 serves the following communities:

- Arlington Heights
- Barrington
- Barrington Hills
- Buffalo Grove*
- Carpentersville*
- Deer Park*
- Des Plaines*
- Elk Grove Village
- Fox River Grove*
- Hanover Park*
- Hoffman Estates*
- Inverness
- Lake Barrington
- Mount Prospect
- North Barrington
- Palatine
- Prospect Heights
- Rolling Meadows
- Roselle*
- Schaumburg
- South Barrington
- Tower Lakes
- Wheeling

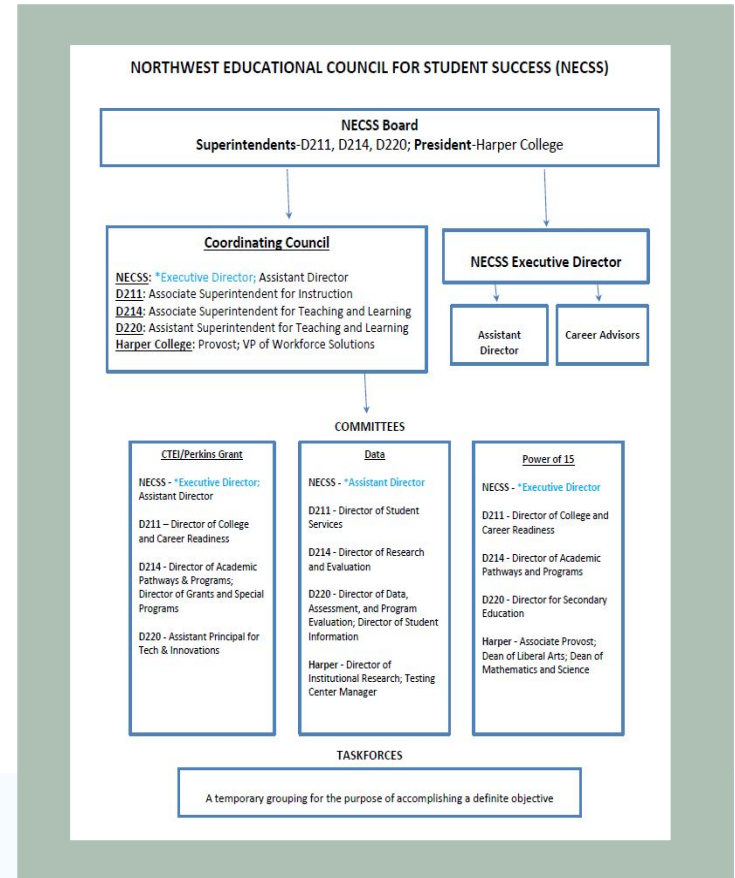
NECSS ORGANIZATION



Collaborative Leadership

Organizational Voice

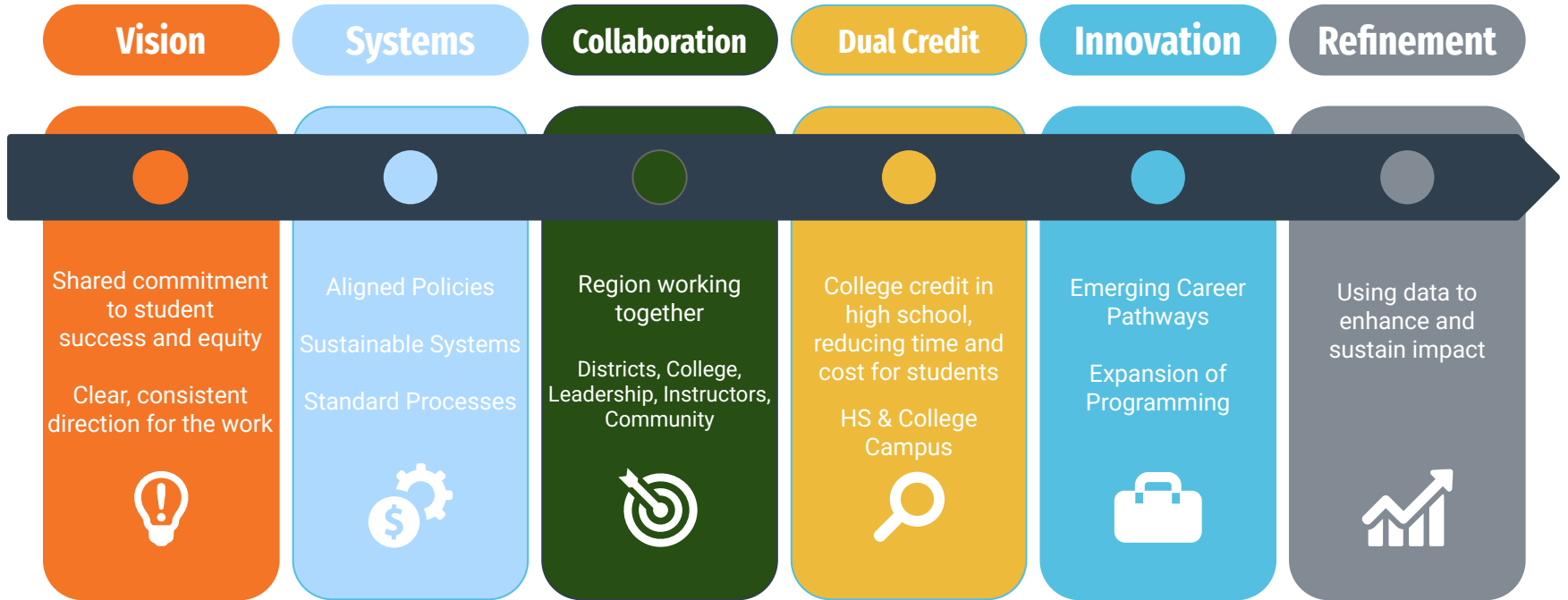
Dynamic Committees



FRAMING THE IMPORTANCE OF REGIONAL COLLABORATION



PARTNERSHIP DEVELOPMENT



PARTNERSHIP HIGHLIGHTS



PARTNERSHIP HIGHLIGHTS

- **Transitional Instruction - Math and English**
- **Team Meetings**
- **Advisory Board Collaboration**
- **Program Timeline Alignment**
- **Team Based Challenge Partnerships**
- **Student Support Services**
- **Student Campus Events**

Harper College

ADMISSIONS OUTREACH



Admissions Outreach transforms the lives of a diverse community by communicating educational opportunities and providing exceptional service throughout the enrollment process.

OUR SERVICES:

- ✓ **EDUCATE THE COMMUNITY ABOUT THE BENEFITS OF A HARPER EDUCATION**
Harper College offers a variety of certificate and degree programs, and the Admissions team can provide you with information about different areas of interest and their related programs.
- ✓ **HELP NEW STUDENTS COMPLETE THE ENROLLMENT STEPS**
From submitting an application to reviewing your next steps, our team is here to assist you.
- ✓ **ENGAGING STUDENTS AND THEIR FAMILIES IN THE ADMISSIONS PROCESS**
Connect with PASO and STEP programs that foster a sense of belonging and support Black and Latinx students as well as their families throughout the admission process.

CONTACT US:

847.925.6700
admissions@harpercollege.edu
Palatine Campus
Building C, Room 103

STAY CONNECTED

Download the Harper Mobile App



Scan for more information

Meet the admissions team: <https://bit.ly/hcmeetadmissions>

NECSS DATA

Year	Course Type	Sections	Courses	Head Count	Seat Count	Credit Hours Earned
2022-23	Transfer	241	30	3,367	4,843	16,167
	Career	252	39	2,521	3,542	10,473
FY23 Total		493	69	5,300	8,385	26,640
2023-24	Transfer	254	30	3,575	5,317	17,955
	Career	246	37	2,702	3,653	10,832
FY24 Total		500	67	5,525	8,970	28,787

28,787 Credits Earned = \$5,000,000

[NECSS Dashboard](#)

CHALLENGES & SOLUTIONS IN REGIONAL COLLABORATION



SOLUTION FOCUSED

- **Implementation of New Coursework**
- **Classroom Visits (building trust)**
- **Instructor Credentials**
- **Technology**
 - **Student Enrollment**
 - **Instructor Rosters / Access**



FUTURE GOALS & NEXT STEPS



CONTINUOUS IMPROVEMENTS

- **Transitional Support for Students**
- **Dual Degree Program**
- **Pathway Alignment**
- **Emerging Technology Courses**



Q&A

Dr. Nancy Awdziejczyk, Executive Director - NECSS

Jennifer Greer, Early College Program Supervisor - D214

Kelly Hansen, Director of Secondary Education - D220

Michele Napier, Director of College and Career Readiness - D211

Kimberley Polly, Dean of Math and Science - Harper College

Sharon Rainbolt, Dual Credit Manager - Harper College

Dr. Jaime Riewerts, Dean of Liberal Arts - Harper College

Resources

- [Internal Dual Credit Timeline](#)
- [Classroom Visit Form](#)
- [Issue Brief Classroom Visits - NACEP](#)
- [Dual Credit Report to the Board](#)
- [Course Request Form](#)
- [Graduate Coursework Pre-Approval Form](#)
- [Documentation for Course Collaboration](#)
- [DCQA - Model Partnership MOU](#)
 - [Cost and Fee Structure](#)
 - [Classroom Visit Form](#)
 - [Course Availability/Approval form](#)
 - [Student Procedures](#)
 - [Late Drop Form](#)
 - [Definitions and Terms](#)
- [Program Development Timeline](#)





**ILLINOIS EDUCATION AND CAREER
SUCCESS NETWORK**



Thank You!



Before you go...

Complete the Conference Evaluation

Help us improve
+ earn PD/CE hours

