



# Success Network Policy Committee: College and Career Pathway Endorsement Workgroup

April 4, 2025, 10:30–11:30am

*As you enter, please write your name, organization and icebreaker in the chat: what was your first job, and one skill you gained from that job?*



ILLINOIS EDUCATION AND CAREER  
**SUCCESS NETWORK**

# Agenda

- Workgroup Flow + Norms
- Overview of CCPE
- Component-Driven Breakout Groups
- Reflection and Action Planning

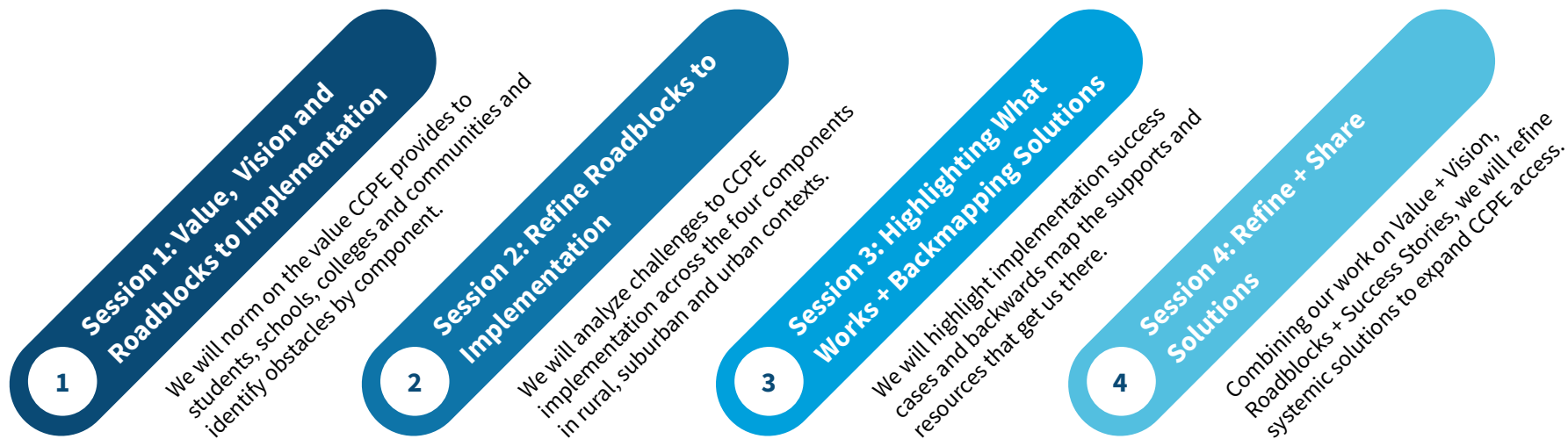
# Our Objectives

In this workgroup, we will...

- Conceptualize value for students and colleges in implementing the College and Career Pathway Endorsement (CCPE) framework;
- Understand barriers to access and implementation for endorsements in districts across the state;
- Identify geographic variation in these challenges;
- Share best practices in building awareness & buy-in as well as resources for implementation;
- Ideate solutions to increase access for endorsement earners and ease of implementation for schools;
- Identify recommendations for practitioners and policymakers to expand access to CCPEs.



# CCPE Workgroup Flow



# Workgroup Norms

**This is a brave space.** While we need to be kind and respectful of one another, these conversations will be challenging and may involve some serious discomfort. We need to come prepared to be honest, vulnerable, and open.

**Get informed.** Consider data and other evidence that frame the challenges at hand without relying heavily on anecdotal stories. Further, examine and acknowledge potential biases present or voices that may be represented.

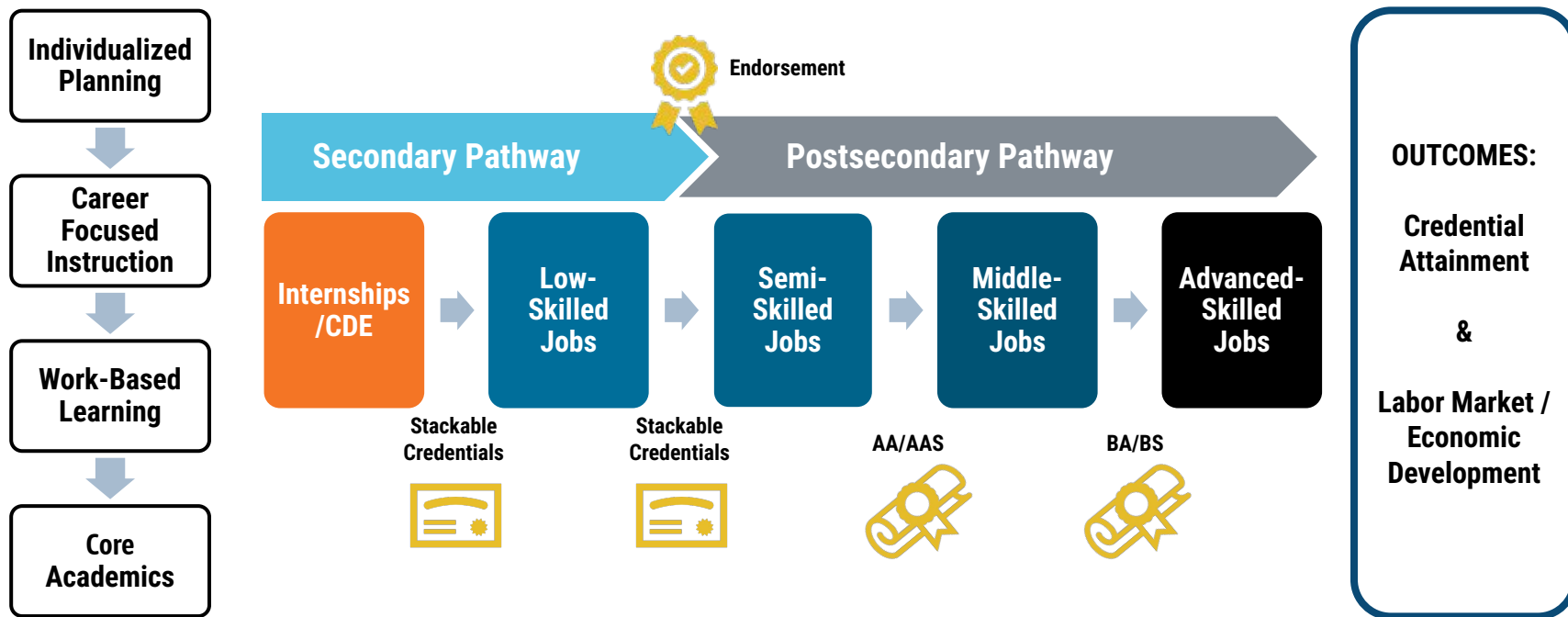
**Be present.** Come curious and ready to participate, and stay engaged throughout. Be mindful of the space you take up, stepping back to hold space for others and stepping up when you've been quieter. Pay attention to verbal and nonverbal cues from yourself and team members and be mindful of the vibe.

**Seek to understand different perspectives.** We all have something to contribute, and we all enter this space with different identities and experiences. Encourage and make space for other voices and listen to understand, not simply to respond.

**Leave with lessons, but the stories stay.** We all bring a wealth of knowledge to our respective fields and much of that is contextually tied to our communities. In order to respect confidentiality, we will honor one another by sharing our learnings from this space without sensitive specifics.

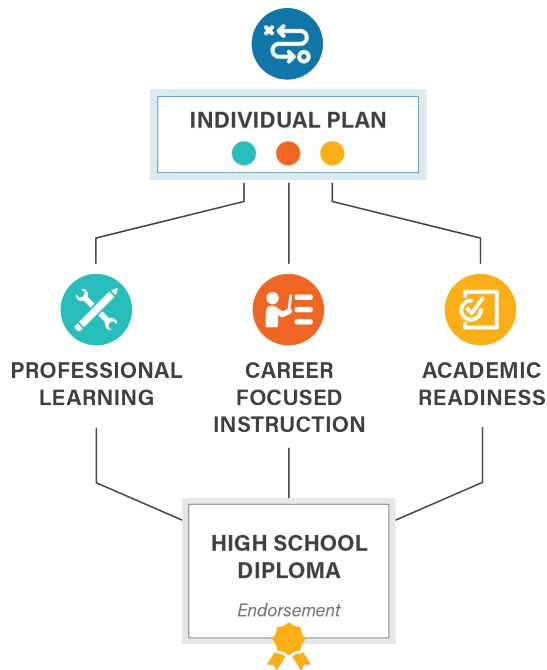
# Policy Context for CCPE

# Illinois Pathways Model



[Illinois Career Pathways Dictionary](#)

# College and Career Pathway Endorsements Framework



## INDIVIDUAL PLAN

Each student completing an endorsement must have an individualized plan, which includes college planning linked to early understanding of career goals, financial aid, resume, and personal statement.

## PROFESSIONAL LEARNING

Awareness, exploration, and preparation activities that provide opportunities for students to interact with adults in their workplace and gain essential employability and technical competencies.

9th	10th	11th	12th
At least 2 career exploration activities or 1 intensive experience		60 cumulative hours of paid or for credit, supervised career development experience(s) with a professional skills assessment r	
At least 2 team-based challenges with adult mentoring			

## CAREER-FOCUSED INSTRUCTIONAL SEQUENCE

2 years of secondary coursework or equivalent that include essential employability and technical competencies, at least 6 hours of early college credit, and articulation to a postsecondary credential with labor market value.

9th	10th	11th	12th
Orientation / Introduction Courses			
	Skill Development Courses		
			Capstone / Advanced Courses

## ACADEMIC READINESS

Ready for non-remedial coursework in reading and math by high school graduation through criteria defined by the school district and local community college.



# Endorsements Statewide

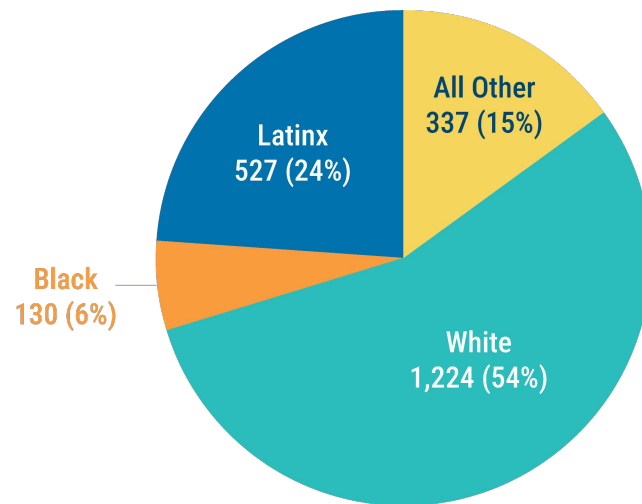
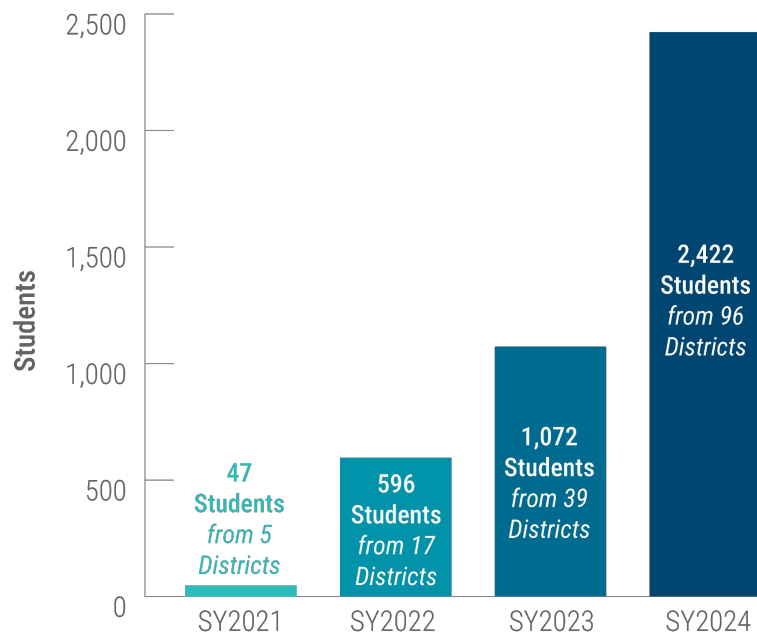
Since 2017, EdSystems has sought out districts willing to implement Illinois' innovative College and Career Pathway Endorsements system. The statewide growth is clear:

	<i>Districts approved to offer the endorsement</i>	<i>Students earning the endorsement</i>
<a href="#"><u>Class of 2021</u></a>	<b>5 districts</b>	<b>47 students</b>
<a href="#"><u>Class of 2022</u></a>	<b>36 districts</b>	<b>596 students</b>
<a href="#"><u>Class of 2023</u></a>	<b>39 districts</b>	<b>1,072 students</b>
<a href="#"><u>Class of 2024</u></a>	<b>94 districts</b>	<b>2,422 students</b>



# CCPEs Earned Are Increasing, But Not Equitably

College and Career Pathway Endorsements Awarded



*\*These demographics are based on an undercount of CCPE earners (2,218 of the 2,422 total) due to timing of data submissions*

## Which component of CCPE is most challenging in your implementation?

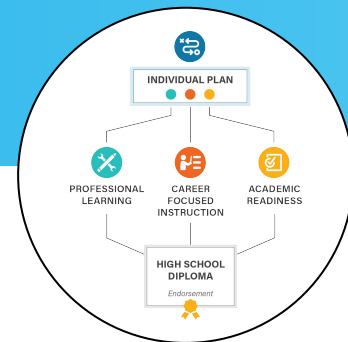
- Individual Plan
- Professional Learning (Work-Based Learning)
- Career-Focused Instructional Sequence
- Academic Readiness

Qualtrics Survey: <https://rb.gy/3u2pux>

# Think, Write, Share



# Breakout Sessions



## GROUP 1

### Career-Focused Instruction

*Are you in the process of implementation but struggling with career-focused instruction? Join this group to share challenges and strategize solutions.*

## GROUP 2

### Professional Learning


*Are you in the process of implementation but struggling with professional learning? Join this group to share challenges and strategize solutions.*

## GROUP 3

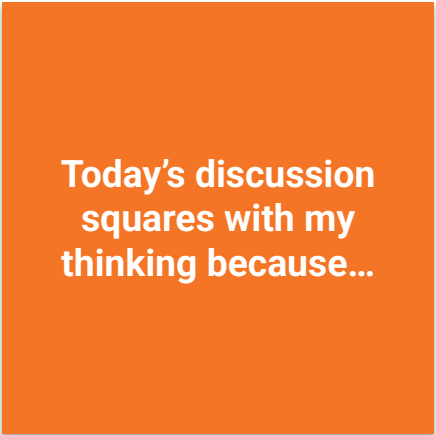
### Scaling, Access, and Continuous Improvement

*Already implemented CCPE? Join this group to discuss challenges to scaling, student recruitment, continuous improvement and buy-in, and strategize solutions.*

# Closing Reflections

A large green circle with a subtle drop shadow.

Something still  
circling in my  
head is...

A large orange square with a subtle drop shadow.

Today's discussion  
squares with my  
thinking because...

A large blue triangle with a subtle drop shadow.

One  
important  
point from  
today is...

# CCPE Workgroup Flow



**Thank you!**



ILLINOIS EDUCATION AND CAREER  
**SUCCESS NETWORK**

***Policy Committee***

## **Next CCPE Workgroup**

April 25, 10:30–11:30 a.m.

## **Building Pathways to Career, Connection, and Choice**

April 28, 10-11:00 a.m.

## **Q2 Full Committee Meeting**

June 3, 9:30–11 a.m.

Register at [ILSuccessNetwork.org/  
policy-committee](https://ILSuccessNetwork.org/policy-committee)