



ILLINOIS EDUCATION AND CAREER
SUCCESS NETWORK

Success Network Policy Committee

Q2 Meeting

June 10, 2025



Welcome & Introductions

Please share in the chat:

- Your name and organization
- Your dream job as a kid

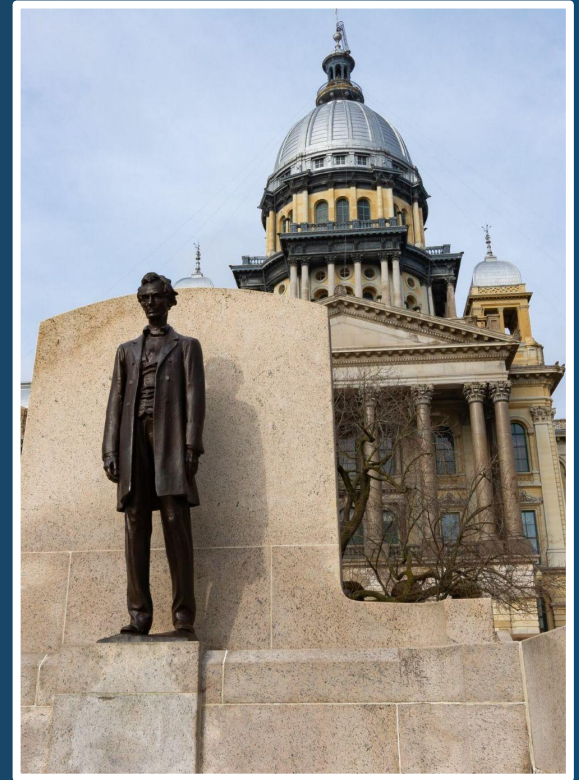
Agenda

Today's Policy Committee meeting will be recorded and shared online.

- Welcome & Introductions
- Federal Policy and 104th IL General Assembly Updates
- College & Career Pathway Endorsement Workgroup: Findings and Emerging Recommendations
- Resource Spotlight: Work-Based Learning Continuum for IT
- Seeking Feedback: Success Network Data Dashboard Updates
- Wrap-Up and Announcements

State & Federal Policy Updates

[EdSystems Recap Blog](#)



Federal Policy Updates – Proposed Budget

- **K-12**
 - Title I maintained, IDEA increased but also other programs consolidated in
 - K-12 Simplified Funding Program (K-12 SFP), which would consolidate 18 existing K-12 programs under ESSA into one \$2 billion formula grant to states, includes significant reduction (~70% less funding overall)
 - Elimination of \$ for other elementary/secondary education programs, including the Language Instruction for English Learners and Immigrant Students (Title III of ESSA), Migrant Education, Teacher and School Leader Incentive program, Education, Innovation, and Research Grants, and Comprehensive Centers, etc.
- **Higher Ed**
 - Substantial cuts to maximum Pell awards
 - Reduction in Federal Work Study
 - Elimination of TRIO, GEAR UP, and the Teacher Quality Partnership.
- **Data & Research**
 - Institute of Education Sciences (IES) and National Assessment for Educational Progress (NAEP)

Federal Policy Updates (continued)

- Executive orders impacting education ([EdCounsel detailed summaries](#))
- Legal action
- Impact of other cuts and decisions:
 - Immigration enforcement
 - Medicaid

104th GA Recap – Budget Highlights

- \$307 million Increase for Evidence-Based Funding (EBF)
- \$1.5 million for literacy plan implementation and the development of a numeracy plan
- \$30 million for Teacher Vacancy Pilot
- \$1.3 million Increase in Funding for Career and Technical Education (CTE)
- \$3.175 Million for Dual Credit funding to ICCB
- \$10 million Increase for Monetary Award Program (MAP)
- \$3 million (total) for Common App implementation (includes One Click Admit, CC pilot, etc)
- Flat funding for Minority Teachers of Illinois Scholarship, Golden Apple, AIM HIGH
- \$2.9 million (total) for Common App implementation (includes One Click Admit, CC pilot, etc)

Note: There will likely be a summer session dedicated to budget revision/revenues given flux in federal funding

104 GA Recap – Legislative Highlights

What passed?

- Dual Credit Quality Act amendment ([HB2967](#))
- Chronic Absence Task Force ([SB407](#))
- AI Guidance from ISBE ([SB1920](#))
- Regional Manufacturing Partnerships ([SB58](#))
- Direct Admissions Act ([HB3522](#))
- Student Transfer Achievement Reform Act ([SB1958](#))

What stalled?

- Community College Baccalaureates
- Adequate and Equitable Funding

Lumina 2040 Goal – Credentials of Value

New Lumina Foundation Goal: By 2040, 75 percent of adults in the U.S. labor force will have college degrees or other credentials of value leading to economic prosperity.

Measure: Post-high school credential and earning at or above benchmark

- Ages 25–64 among the labor force, including short-term credentials
- Benchmark = 15% more than the national median annual salary/wage of a high school graduate

2023 Share of People Earning At or Above Benchmark in Illinois, within Credential Type

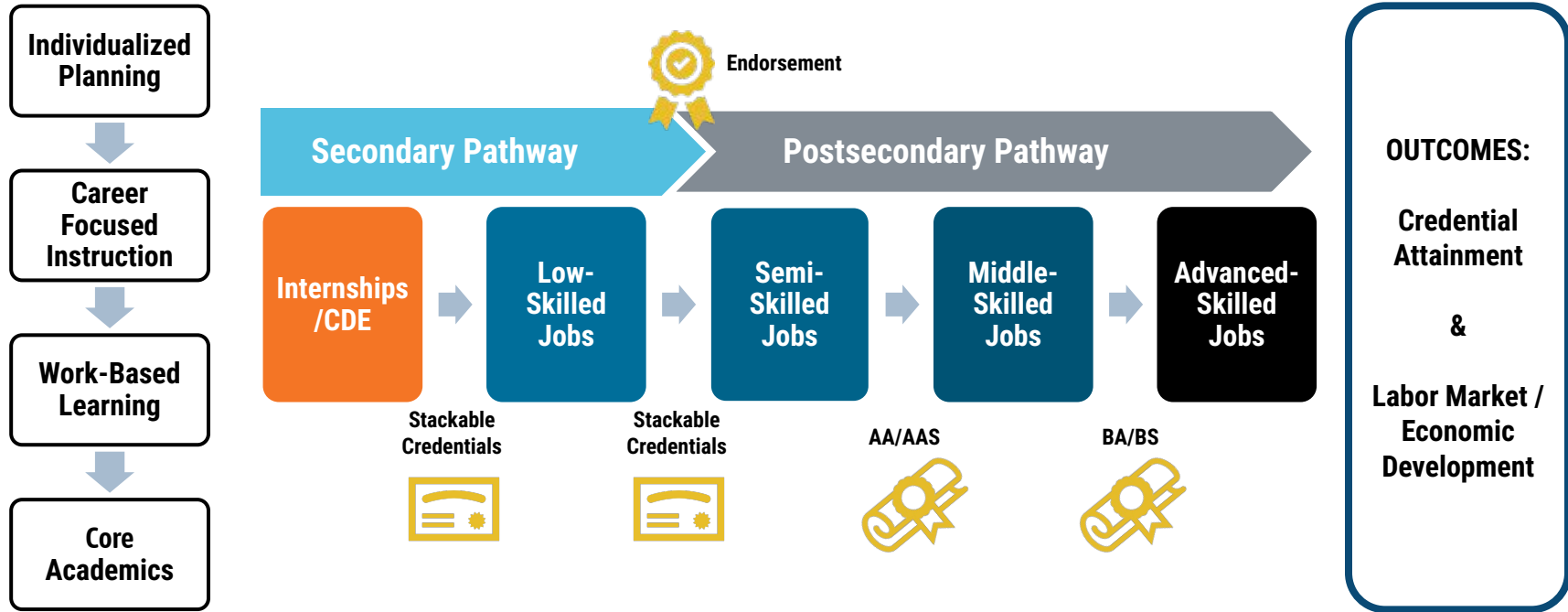
ages 25–64 among the labor force; benchmark reflects 15% more than the national median annual salary/wage of a high school graduate



CCPE Workgroup



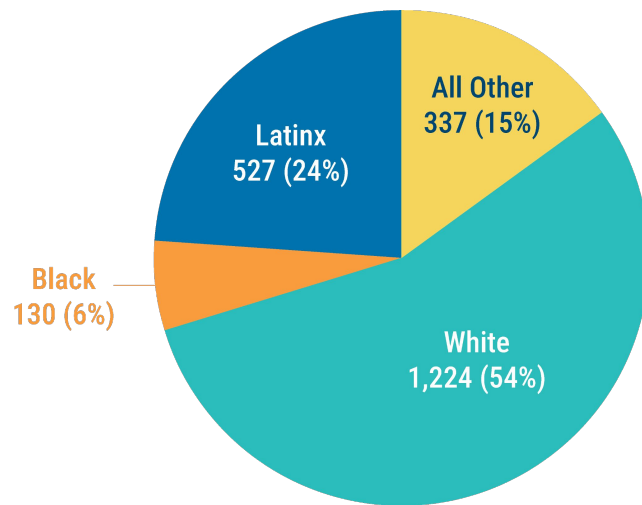
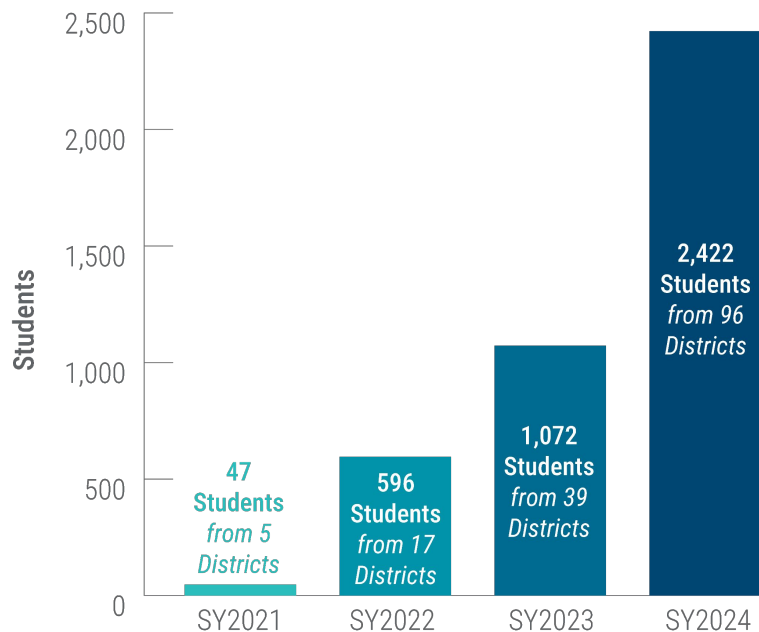
Illinois Pathways Model



[Illinois Career Pathways Dictionary](#)

CCPEs Earned are Increasing, But Not Equitably

College and Career Pathway Endorsements Awarded



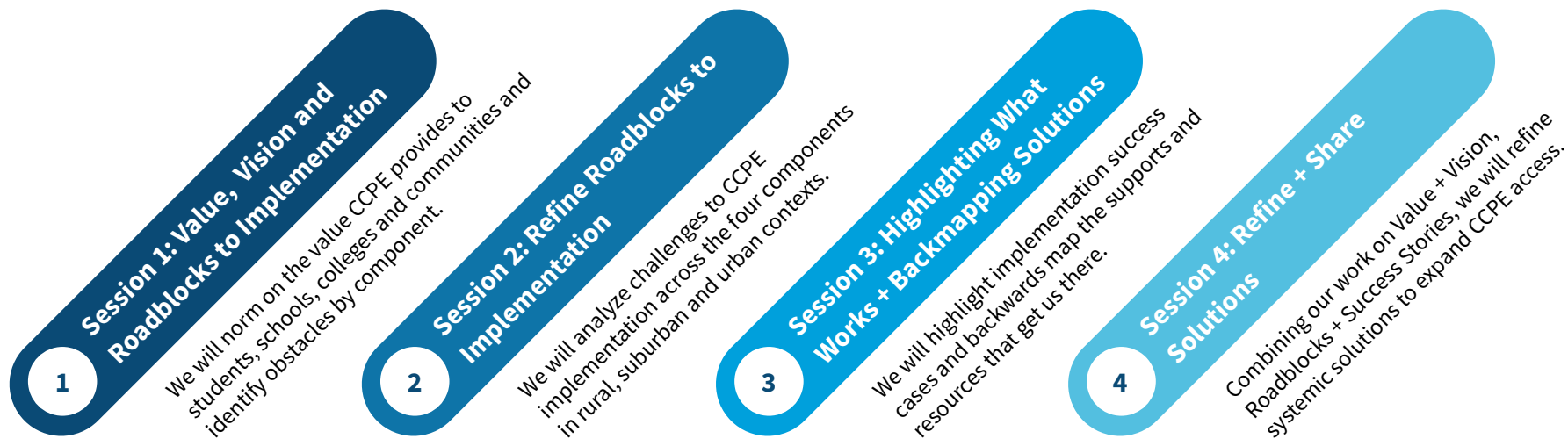
**These demographics are based on an undercount of CCPE earners (2,218 of the 2,422 total) due to timing of data submissions*

Our Objectives

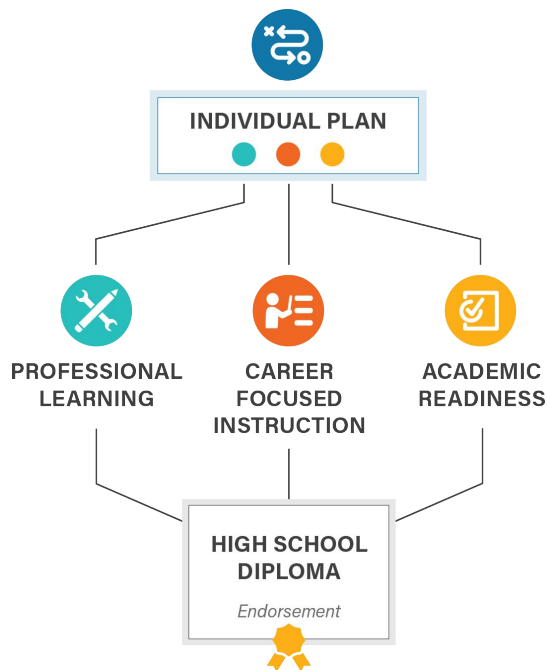
- Conceptualize value for students and colleges in implementing the College and Career Pathway Endorsement (CCPE) framework;
- Understand barriers to access and implementation for endorsements in districts across the state;
- Identify geographic variation in these challenges;
- Share best practices in building awareness & buy-in as well as resources for implementation;
- Ideate solutions to increase access for endorsement earners and ease of implementation for schools;
- Identify recommendations for practitioners and policymakers to expand access to CCPEs.



CCPE Workgroup Flow



College and Career Pathway Endorsements Framework



INDIVIDUAL PLAN

Each student completing an endorsement must have an individualized plan, which includes college planning linked to early understanding of career goals, financial aid, resume, and personal statement.

PROFESSIONAL LEARNING

Awareness, exploration, and preparation activities that provide opportunities for students to interact with adults in their workplace and gain essential employability and technical competencies.

9th	10th	11th	12th
At least 2 career exploration activities or 1 intensive experience		60 cumulative hours of paid or for credit, supervised career development experience(s) with a professional skills assessment r	
At least 2 team-based challenges with adult mentoring			

CAREER-FOCUSED INSTRUCTIONAL SEQUENCE

2 years of secondary coursework or equivalent that include essential employability and technical competencies, at least 6 hours of early college credit, and articulation to a postsecondary credential with labor market value.

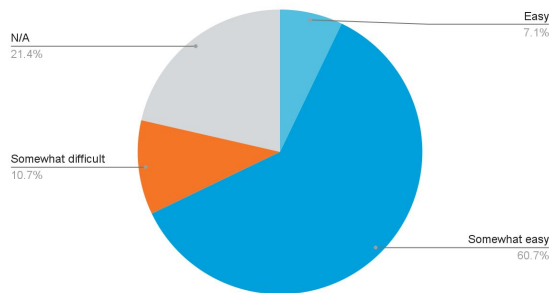
9th	10th	11th	12th
Orientation / Introduction Courses			
	Skill Development Courses		
			Capstone / Advanced Courses

ACADEMIC READINESS

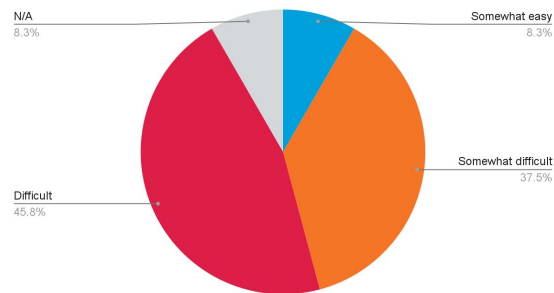
Ready for non-remedial coursework in reading and math by high school graduation through criteria defined by the school district and local community college.

How easy or difficult is each CCPE component to implement?

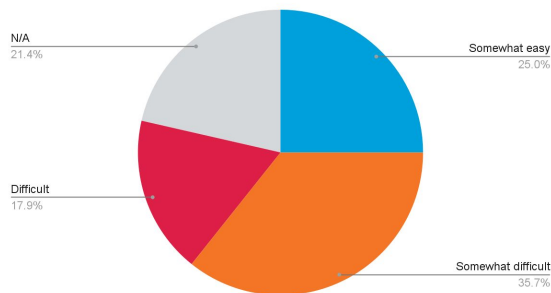
Individual Plan



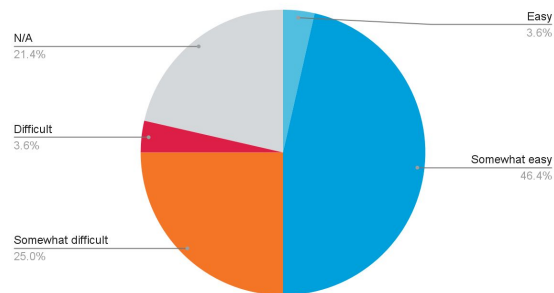
Professional Learning



Career Focused Instruction



Academic Readiness



from CCPE Workgroup
Qualtrics survey, 4/4/2025

Key Takeaways from Session 1 + Survey

Takeaway #1:

Approval **processes** can sometimes impede CCPE implementation.

Takeaway #2:

Partnerships are everything, but can be difficult to establish and maintain.

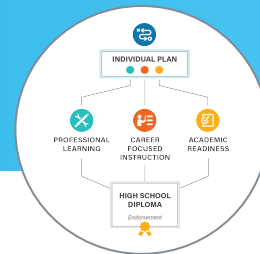
Takeaway #3:

Successful implementation depends on seamless **operations**.

Takeaway #4:

Challenges in implementation trickle down to impact **student access** and **equity**.

Elevating Key Challenges in CCPE



Challenge Bucket #1

Partnerships for Success

- Rural distances and employer availability
- Marketing to industry
- Dual credit partnerships and credentialing
- Communicating CCPE, expanding awareness

Challenge Bucket #2

Operations of Implementation

- Funding and grants
- High counselor caseloads
- Scheduling/60 hour requirement for career development experiences
- Ownership of components
- Time and data intensive
- Transportation

Challenge Bucket #3

Student Recruitment, Access and Equity

- Recruitment practices
- District resourcing determines access
- Student characteristics impacting their pathway access (*ex., unpaid teacher or CNA pathways more female*)
- Currency for students

Jill Hlavacek, Director of Innovation and Learning,
Naperville CUSD 203

- This is the work of shifting human systems
- Huge benefits in boosting student engagement and attendance via curriculum-embedded TBCs and WBL

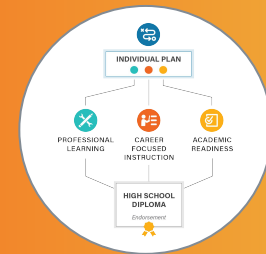
Andrew Martin, Career Pathways Navigator, Highland Community College

- Bringing multiple partners to the table can streamline sharing of best practices + creating shared goals
- Anticipate partner needs/questions, come prepared with resources/information

Ericka Kouba, Career Coordinator, Des Plaines Valley Region EFE

- Center on students to generate buy-in from staff, take on “lift” so teachers can focus on creative pedagogy
- Work with what we have, not starting from scratch

Session 3 Panel: Promising Practices in CCPE Implementation



Ideating Solutions for Challenges: Partnerships

Challenges

Partnerships for Success

- Rural distances and employer availability
- Marketing to industry
- Dual credit partnerships and credentialing
- Communicating CCPE, expanding awareness

Potential Solutions

- State agency funds to support community college engagement + currency
- Collaboration with DCEO and IDFP to create a licensure module that introduces CCPE to emerging businesses
- State agency funds to support dual credit credentialing in core/industry-demanded courses
- Model Business Partnership template, one-pagers, marketing materials for industry
- Focused grants for rural business partnerships (virtual or school-based)

Ideating Solutions for Challenges: Operations

Challenges

Operations of Implementation

- Funding for coordination/transportation
- High counselor caseloads
- Scheduling/60 hour requirement for career development experiences
- Ownership of components
- Time and data intensive
- Transportation

Potential Solutions

- Mini-grants to defray transportation costs
- Waiver for 60-hour requirement and/or focus on competency-based approach
- Statewide, school-level platform/resources to support individual planning
- Stronger coordination between state agencies to strengthen ownership of components on local level
- Collaboration with ISACorps to support CCPE advising

Ideating Solutions for Challenges: Student Access

Challenges

Student Recruitment, Access and Equity

- Recruitment practices
- District resourcing determines access
- Student characteristics impacting their pathway access (*ex., unpaid teacher or CNA pathways more female*)
- Currency for students

Potential Solutions

- Elevate student voice in currency conversations
- Extension of 1-year renewal to enable focus on continuous improvement in student participation/outcomes
- Student + family facing marketing
- Subsidies or utilization of work study funds for CDE wages (especially for smaller local businesses)

Feedback Session: Emerging CCPE Recommendations

Want to dig deeper on these emerging recommendations and offer your feedback?
Join us on **June 18th from 10-11am.**



Spotlight: New WBL Resource



I-WIN

Illinois Work-Based Learning
Innovation Network

from Education Systems Center at NIU

Explore the [I-WIN Resource Hub](#)
and [subscribe to the newsletter](#)



Highlight and explore
innovative models for
work-based learning



Engage in conversations
on creating sustainable,
high-quality models
that provide broader
and more equitable
access, focusing on
building social capital
for Black and Latinx
students



Build connections
among communities to
share best practices,
learnings and resources



Identify needs for state
policy changes or
support systems


New IT Work-Based Learning Continuum



- Models from communities across Illinois that span the full work-based learning continuum in IT
- Districts and partners are encouraged to adapt and apply these models

Explore the IT WBL Continuum

edsystemsniu.org/it-wbl-continuum

**EdSystems**
EDUCATION SYSTEMS CENTER AT
NORTHERN ILLINOIS UNIVERSITY

A-Z Index Newsletter In

About Us ▾ Our Work ▾ Resources Insights ▾

I-WIN Resource Hub

Resources ▾ Convenings Blog

AN OVERVIEW OF RESOURCES

Work-Based Learning Continuum for Information Technology (IT)

The following resource is compiled of models across the work-based learning continuum from communities throughout Illinois to offer high-quality experiences in IT. We hope school districts and their partners can utilize, repurpose, and apply these models to support the design and implementation of work-based learning experiences aligned to an IT pathway.

1 Career Awareness

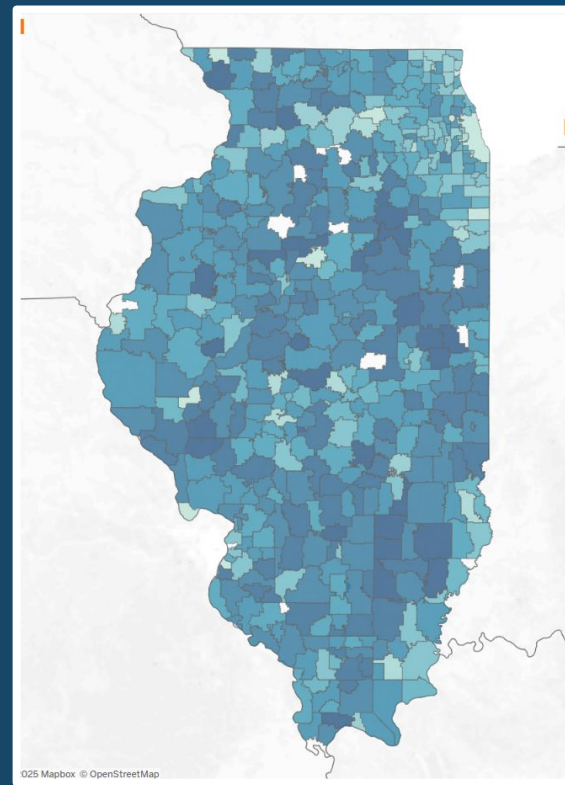
- CareerOneStop, sponsored by the U.S. Department of Labor, Employment and Training Administration, offers quick facts and videos about the IT career cluster for teachers to share with students.
- ConnectED's Day at Work video series features a video game designer.
- The Cyber Innovation Center created a set of cybersecurity career profile cards to support career awareness.
- National Initiative for Cybersecurity Careers and Studies (NICCS) developed a cyber careers pathways tool.

2 Career Exploration

Herrin CUSD 4

- Attend the Chamber of Commerce Career Expo
- Tour SIU, taking a closer look at its Computer Science program and two clubs: Computer Science Tech Dawgs and Security Dawgs.

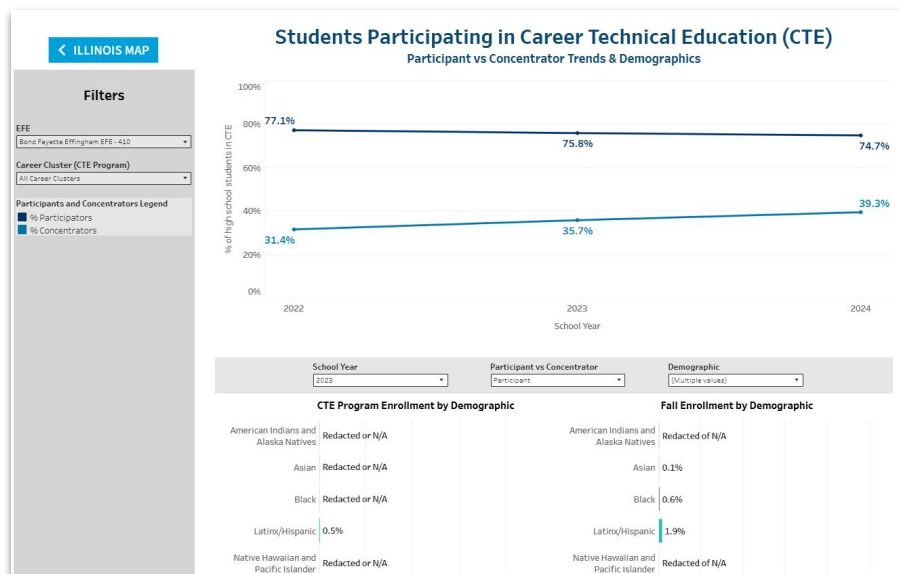
Seeking Feedback: Success Network Data Dashboard



Success Network Data Dashboard: New Features

Demo

CTE Participation Dashboard: EFE View



Request for Feedback

The EdSystems data team wants to hear from you!

What current features in the Success Network Dashboard do you use in your work? What new features would you like to see?

Tell us in the exit ticket at the end of this meeting!

Summer Reading: Relevant + Recent Reports

Click the image to access



Identifying Potential Speakers

*Have an idea about a local practitioner
or leader to share their work with our
Committee? Share in the Exit Ticket!*





ILLINOIS EDUCATION AND CAREER
SUCCESS NETWORK

Visit the policy committee website to:

- Register for fall Policy Committee: 9:30-11am September 24, 2025
- View recordings of past meetings
- Opt-in to emails



ILLINOIS EDUCATION AND CAREER
SUCCESS NETWORK

**Please fill out our Exit Survey.
Thank You!**

