



ILLINOIS EDUCATION AND CAREER  
**SUCCESS NETWORK**

# Success Network Policy Committee

*Q3 Meeting*

September 24, 2025



# Welcome & Introductions

*Please share in the chat:*

- Your name and organization
- Your favorite back to school tradition

# Agenda

*Today's Policy Committee meeting will be recorded and shared online.*

- Welcome & Introductions
- Illinois Workforce and Education Research Collaborative (IWERC) Report
- College & Career Pathway Endorsement (CCPE) Workgroup Memo
- State Policy Updates and Veto Session Preview
- Looking Ahead through SY 2025-26
- Wrap-Up and Announcements

September 24, 2025

# PRECARIOUS PROSPECTS: COLLEGE COMPLETION AND THE BRIDGE TO EMPLOYMENT

Illinois Education and Workforce Policy Committee



UCHICAGO Consortium  
on School Research

ILLINOIS WORKFORCE AND EDUCATION  
RESEARCH COLLABORATIVE

# AGENCY PARTNERS

- ISAC
- IDES
- ISBE

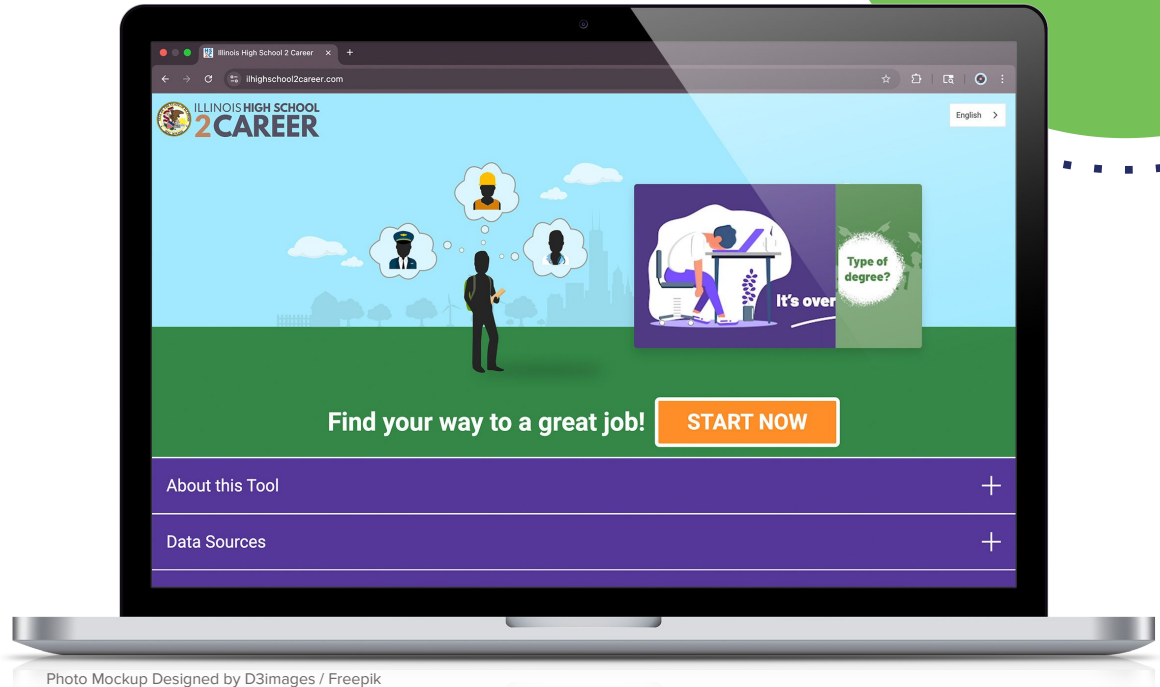


Photo Mockup Designed by D3images / Freepik

<http://ilhighschool2career.com>

UCHICAGO Consortium  
on School Research



# ILLINOIS HS2C DATASET

**Sample:** Senior classes of 2008-2012

## **Inclusion criteria:**

- Complete the FAFSA

- Work in IL in a stable job 3 years after college

## **Who are we missing?**

- Just  $\frac{1}{4}$  of student with only high school education

- Students who worked outside of IL (including many of those who went to college out of state)

# STUDENTS FROM LOW-INCOME FAMILIES

Parent Earnings Quintile 5 (Q5)

Parent Earnings Quintile 4 (Q4)

Parent Earnings Quintile 3 (Q3)

---

Parent Earnings Quintile 2 (Q2)

Parent Earnings Quintile 1 (Q1)

# STUDENTS FROM LOW-INCOME FAMILIES

Students from  
middle and high  
income families

Parent Q5

Parent Q4

Parent Q3

---

Students from  
low income  
families

Parent Q2

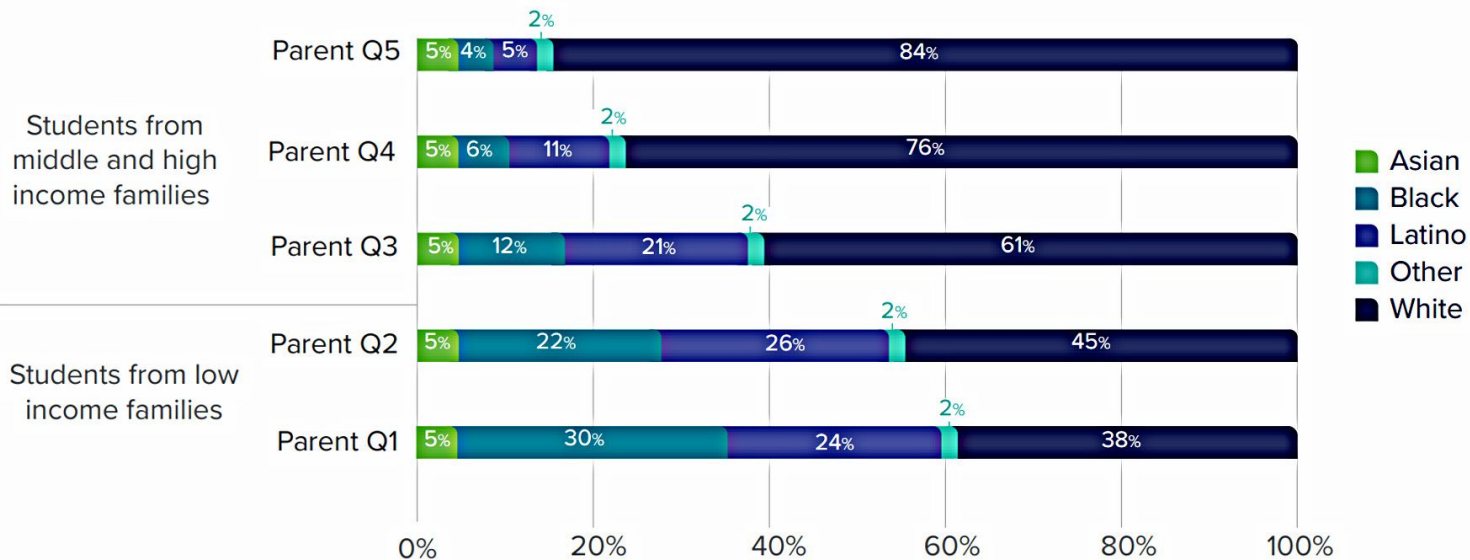
Parent Q1



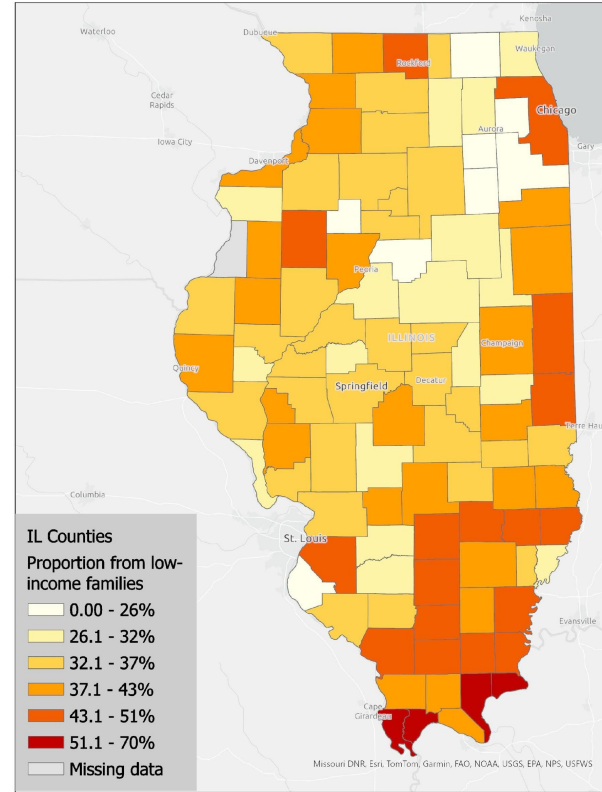
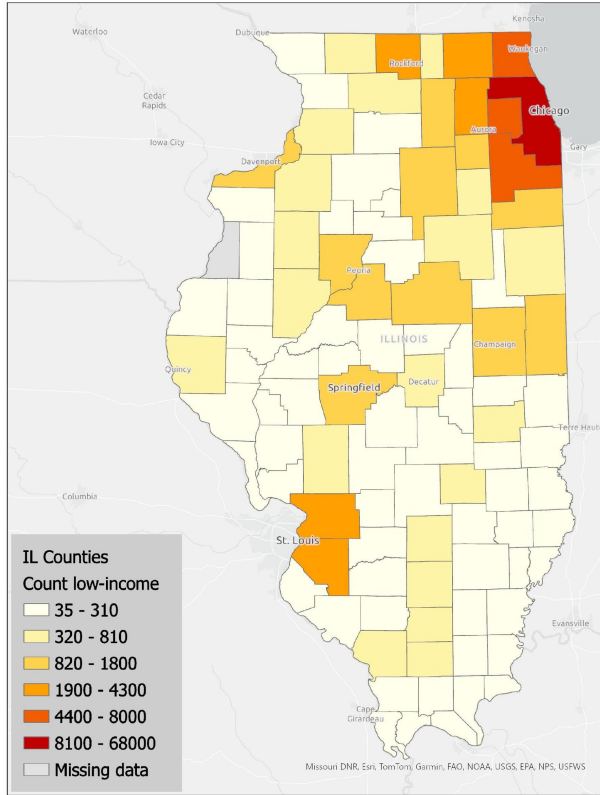
# RESEARCH QUESTIONS

- 1 What were the **demographic characteristics** of students from low-income households?
- 2 What postsecondary **degrees** did students from low-income households attain and in what **degree programs**? What **industries** did students from low-income households go on to work in?
- 3 How did students' career **earnings** vary by the income level of the households they grew up in?

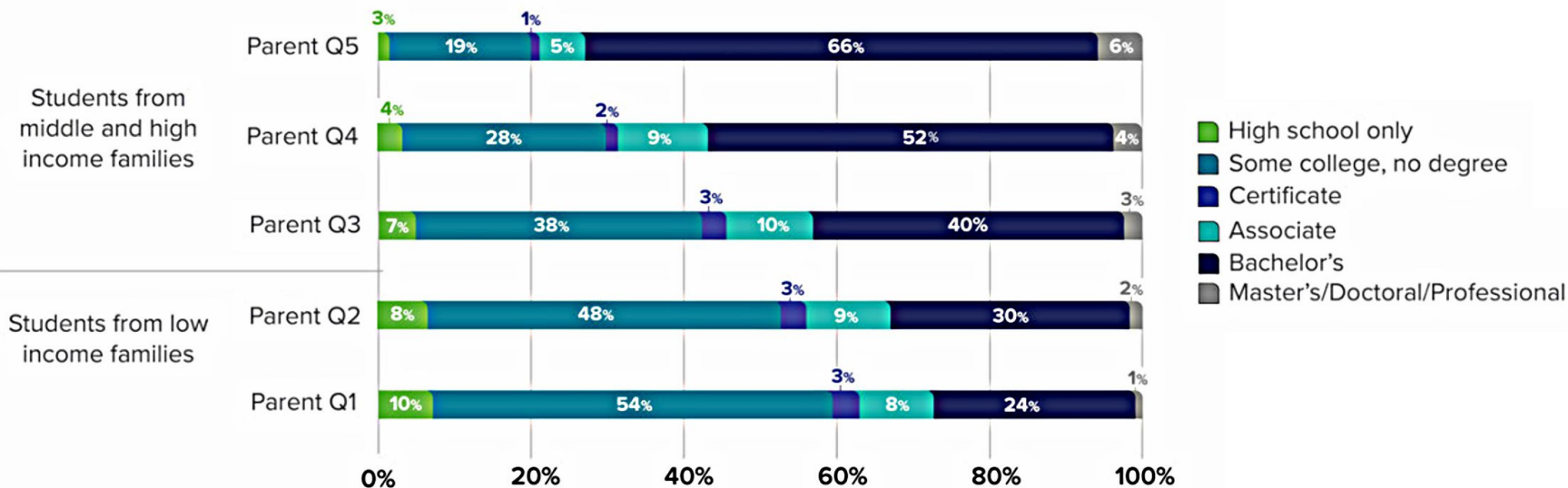
# DEMOGRAPHIC CHARACTERISTICS RACE/ETHNICITY



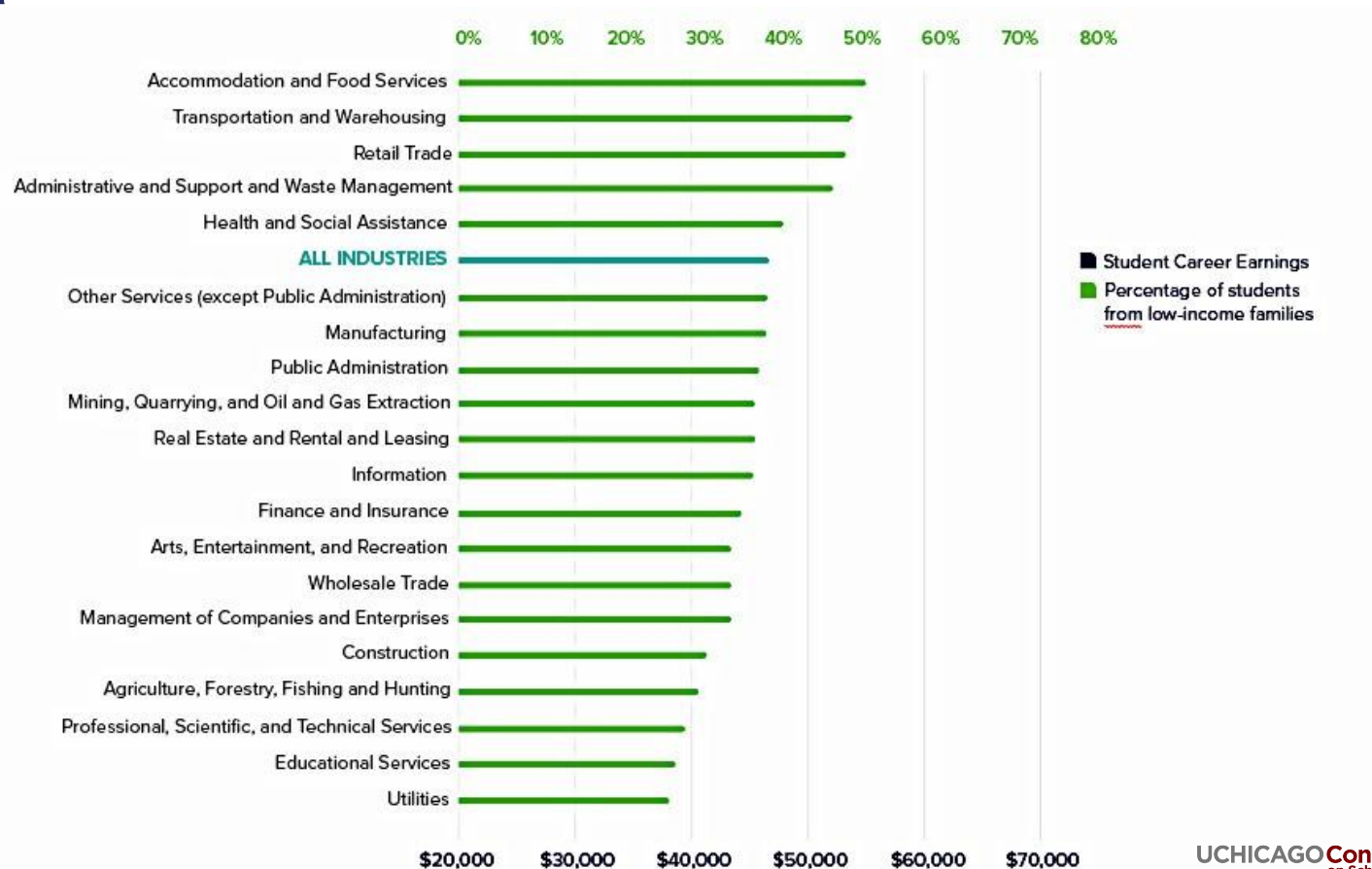
# DEMOGRAPHIC CHARACTERISTICS GEOGRAPHY



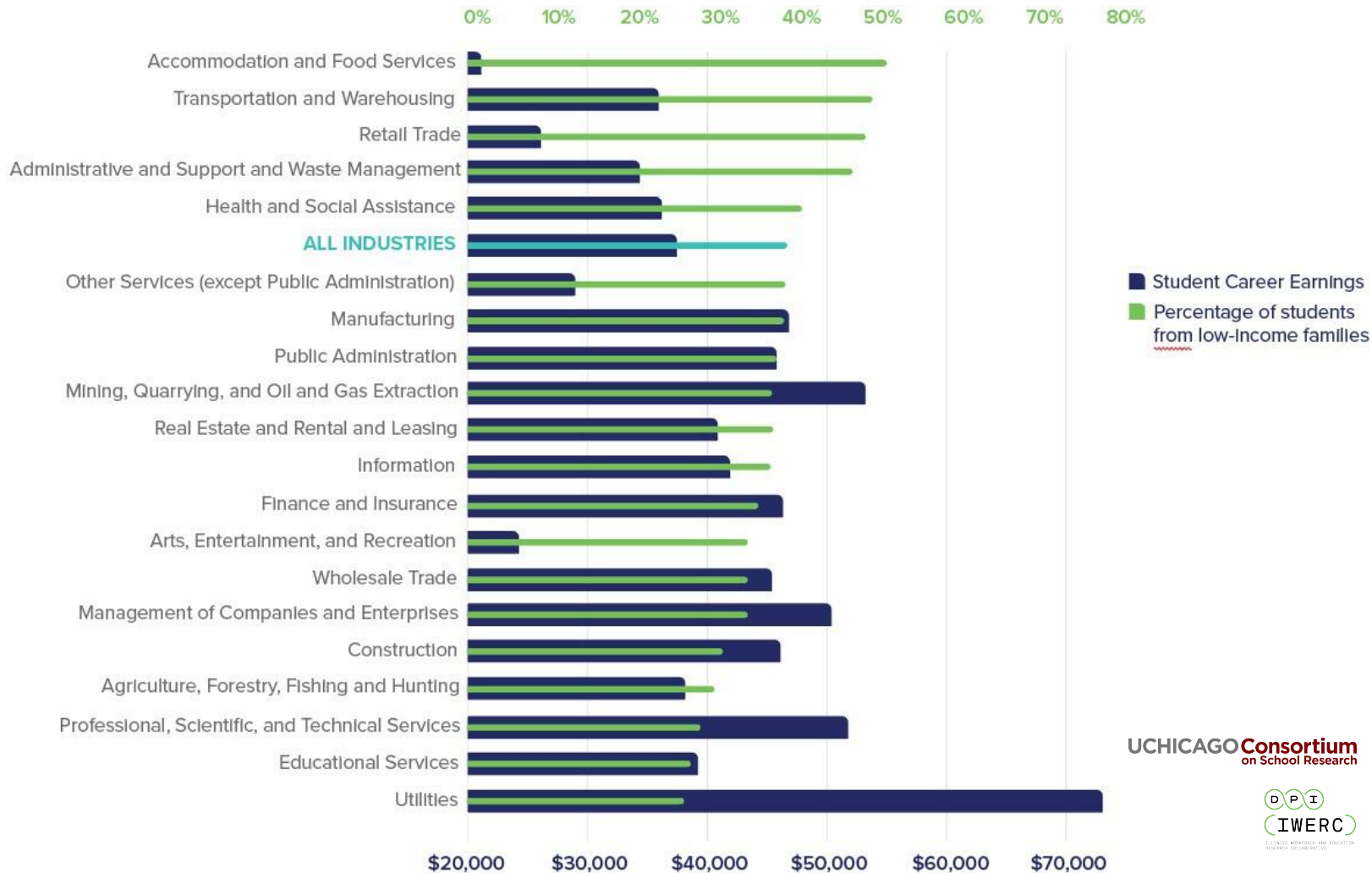
# DEGREE LEVEL



# INDUSTRY



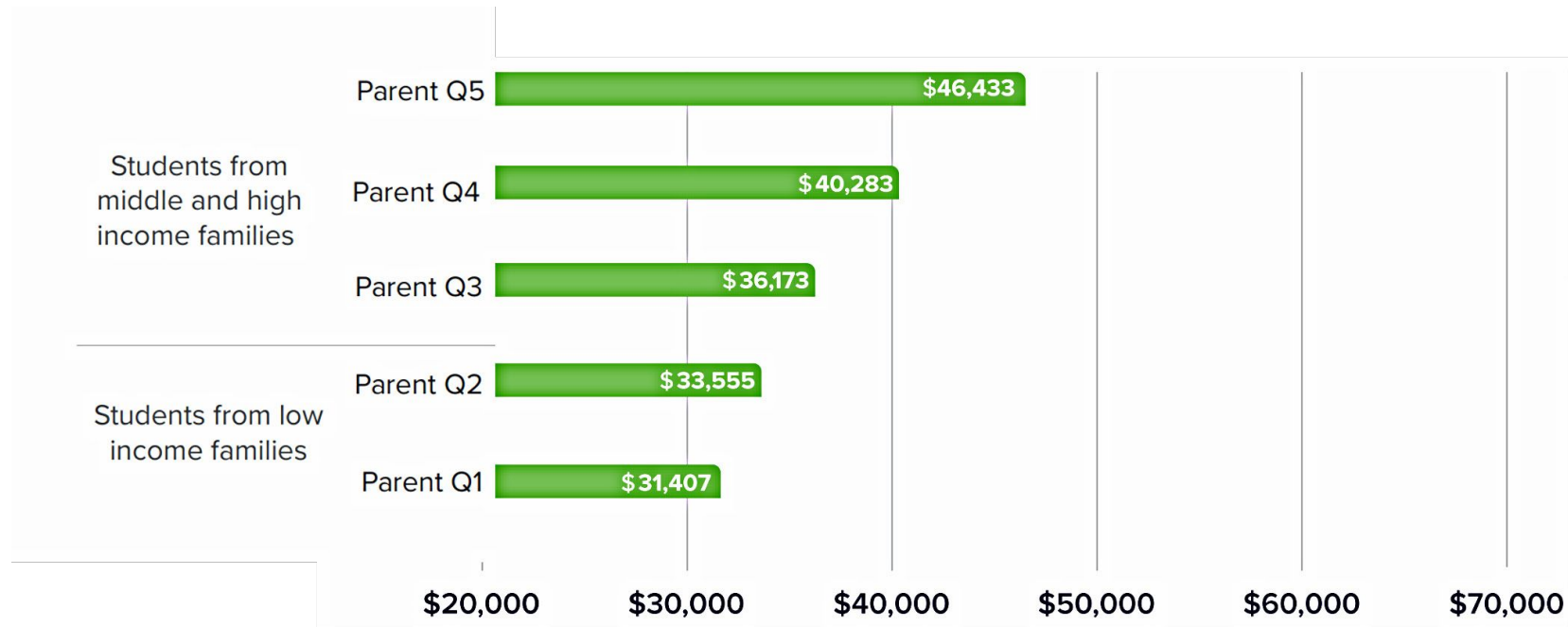
# INDUSTRY



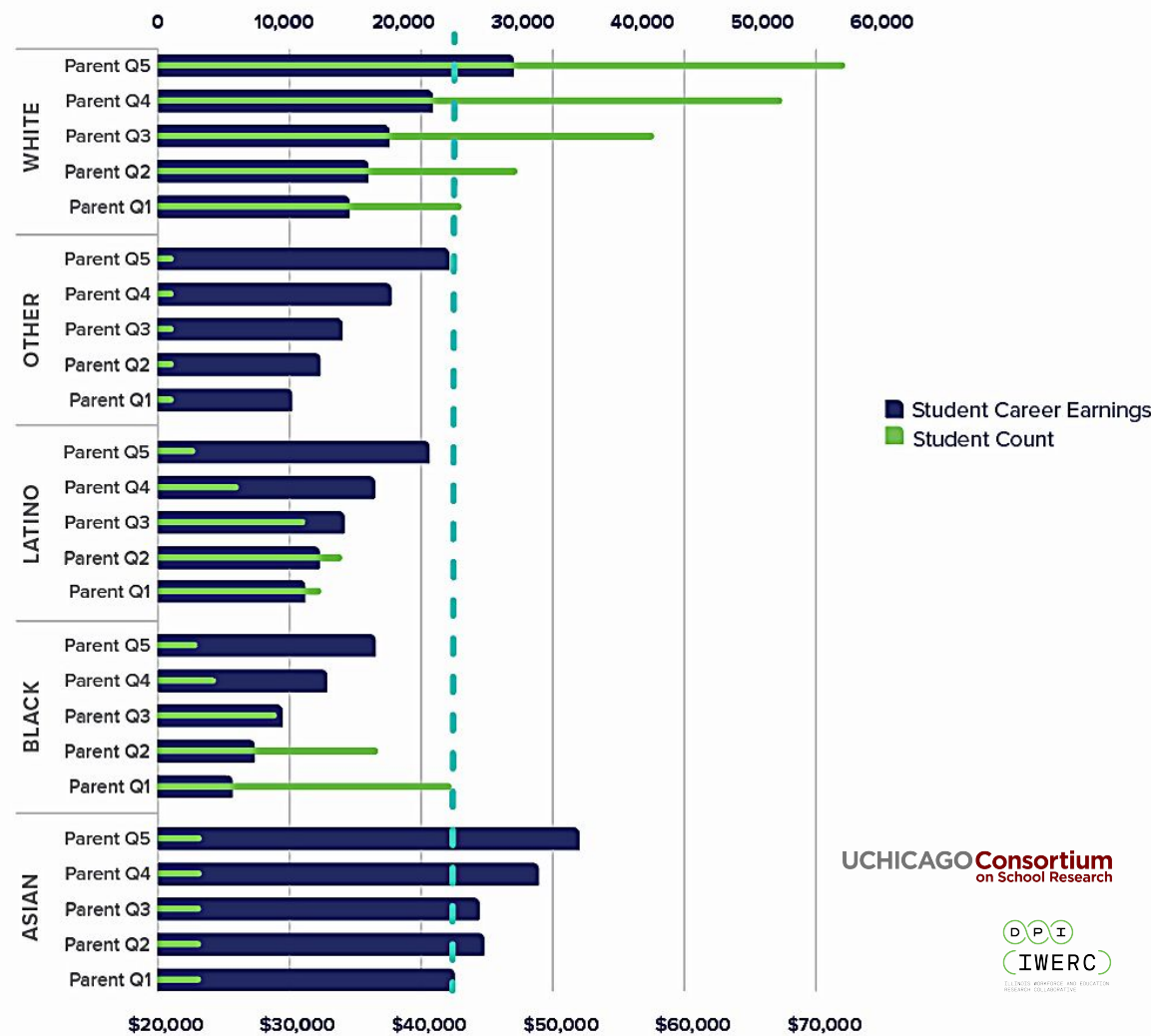
UCHICAGO Consortium  
on School Research



# AVERAGE SOCIOECONOMIC EARNINGS DISPARITIES



# AVERAGE SOCIOECONOMIC EARNINGS DISPARITIES BY RACE

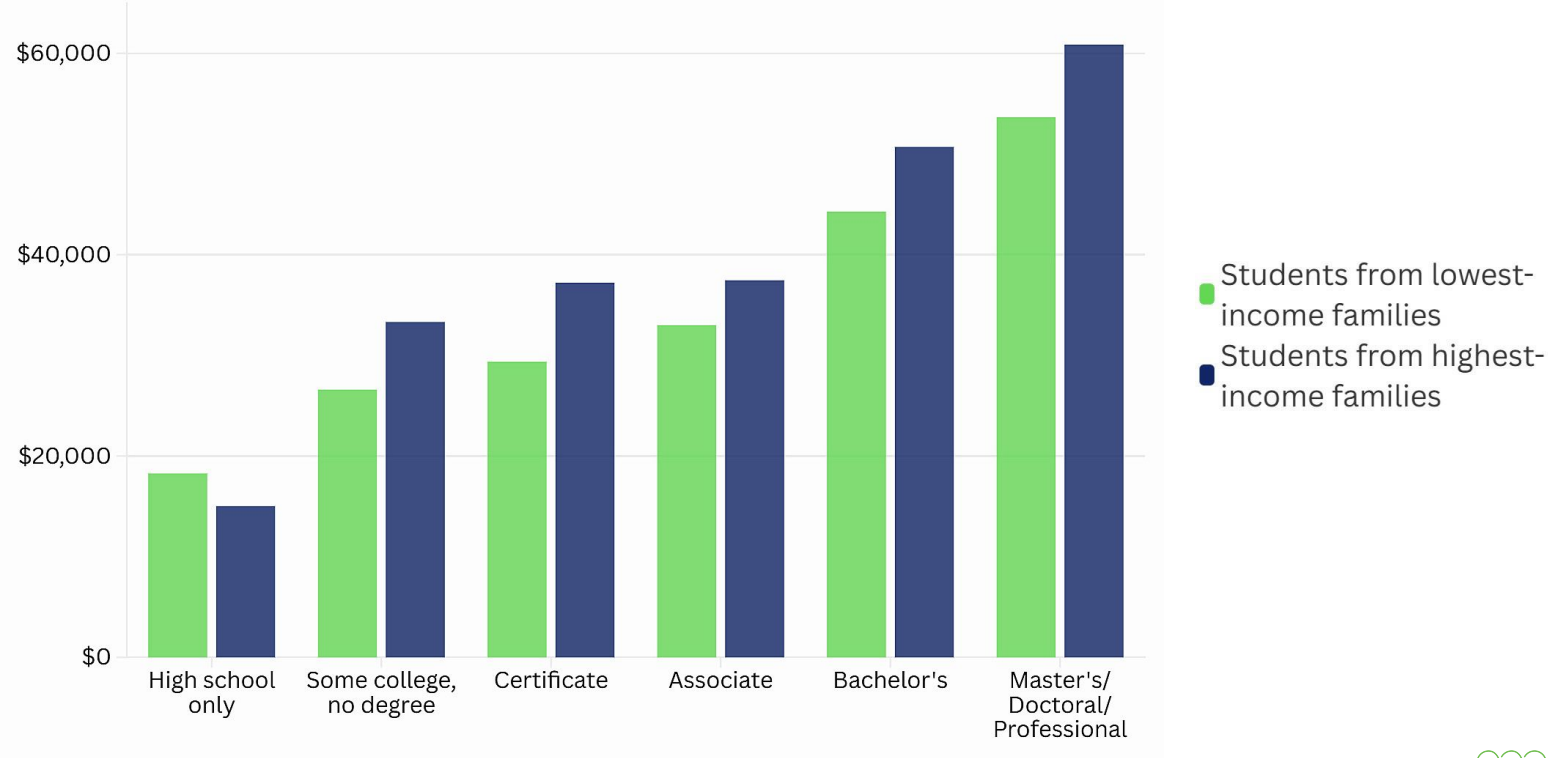




# AVERAGE SOCIOECONOMIC EARNINGS DISPARITIES BY GENDER

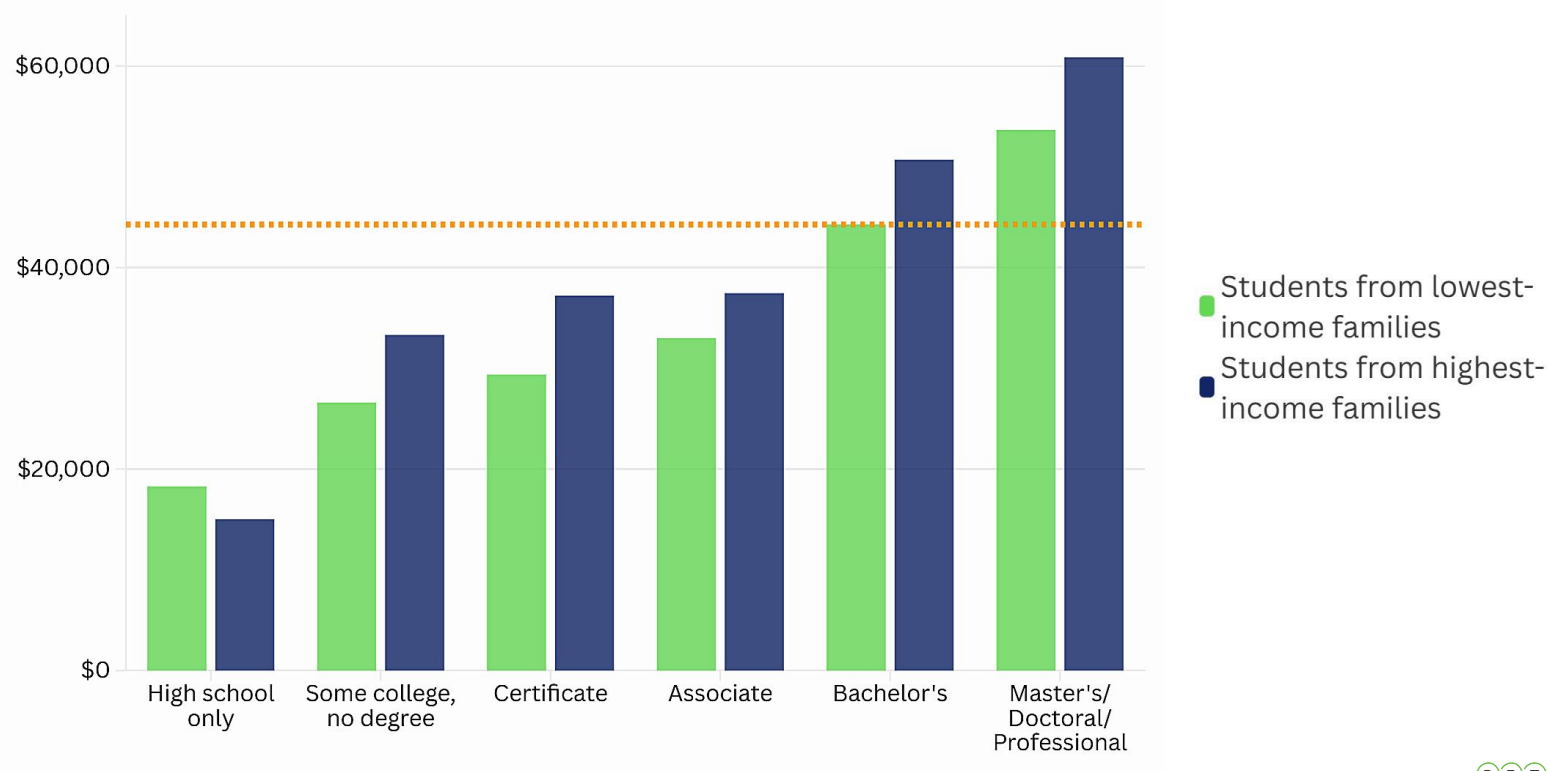


# AVERAGE SOCIOECONOMIC EARNINGS DISPARITIES BY DEGREE LEVEL



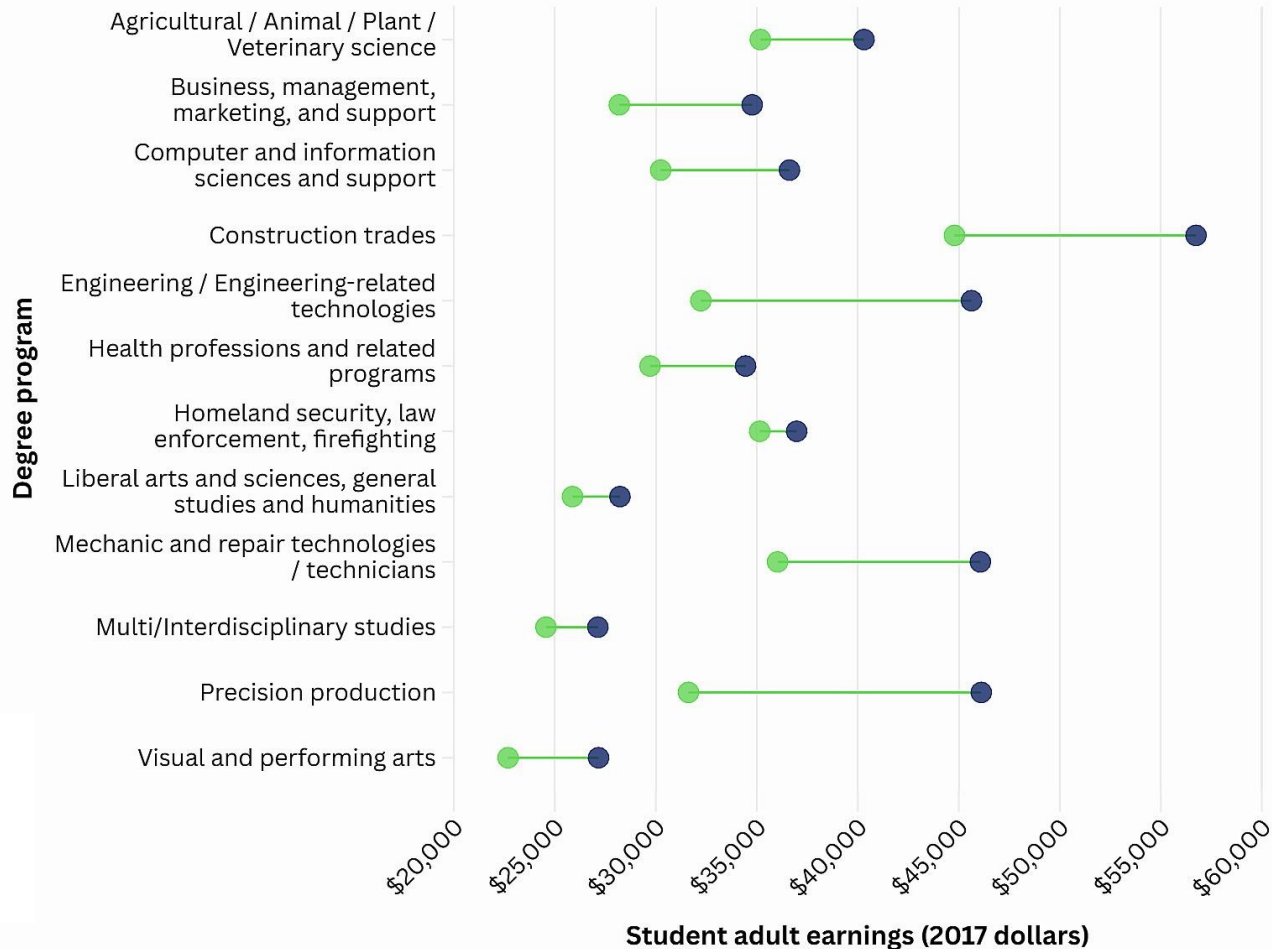
# AVERAGE SOCIOECONOMIC EARNINGS DISPARITIES

## BY DEGREE LEVEL



# AVERAGE SOCIOECONOMIC EARNINGS DISPARITIES BY DEGREE PROGRAM (AA AND CERTIFICATES)

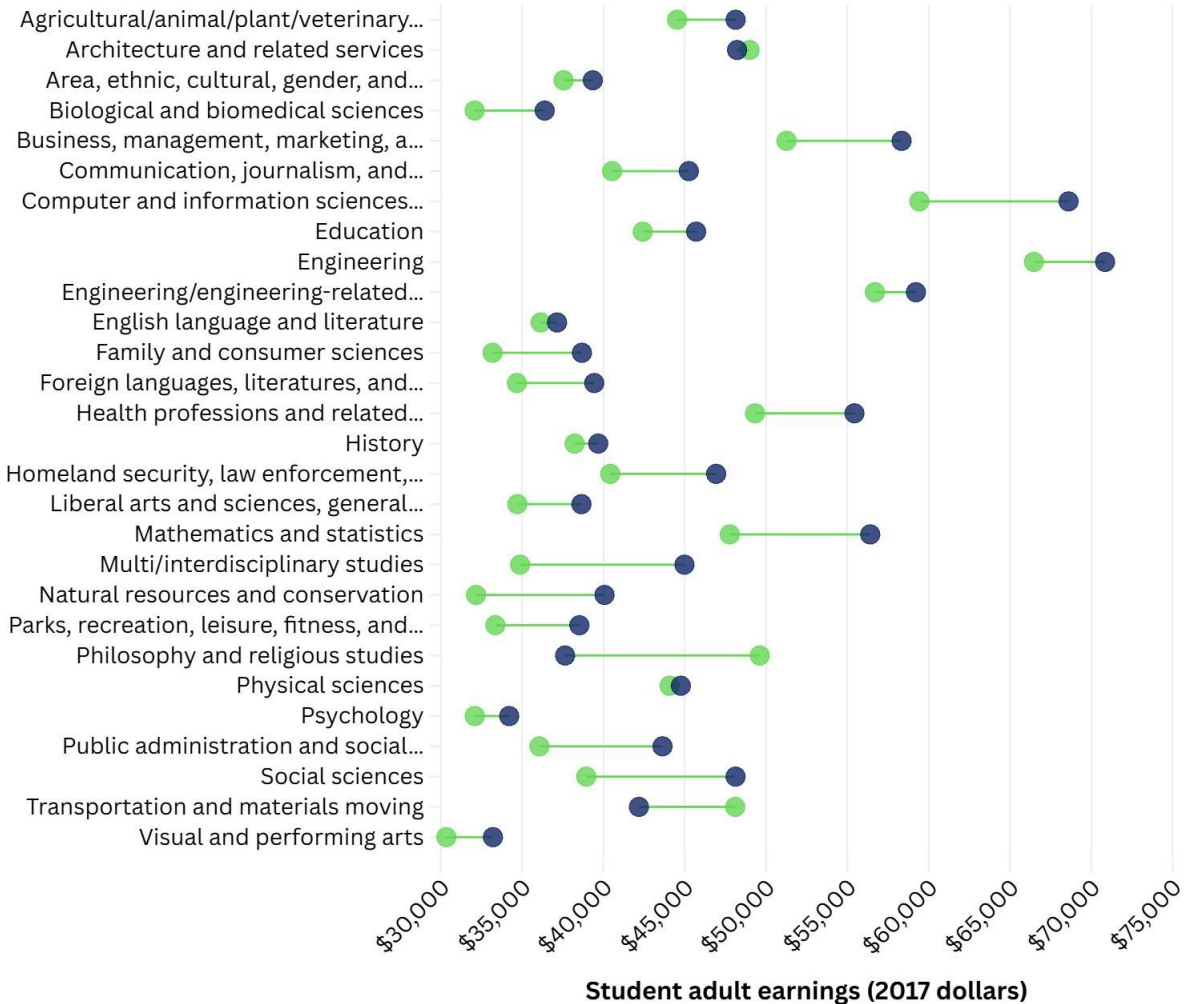
- Students from lowest-income families
- Students from highest-income families



# AVERAGE SOCIOECONOMIC EARNINGS DISPARITIES BY DEGREE PROGRAM (BA+)

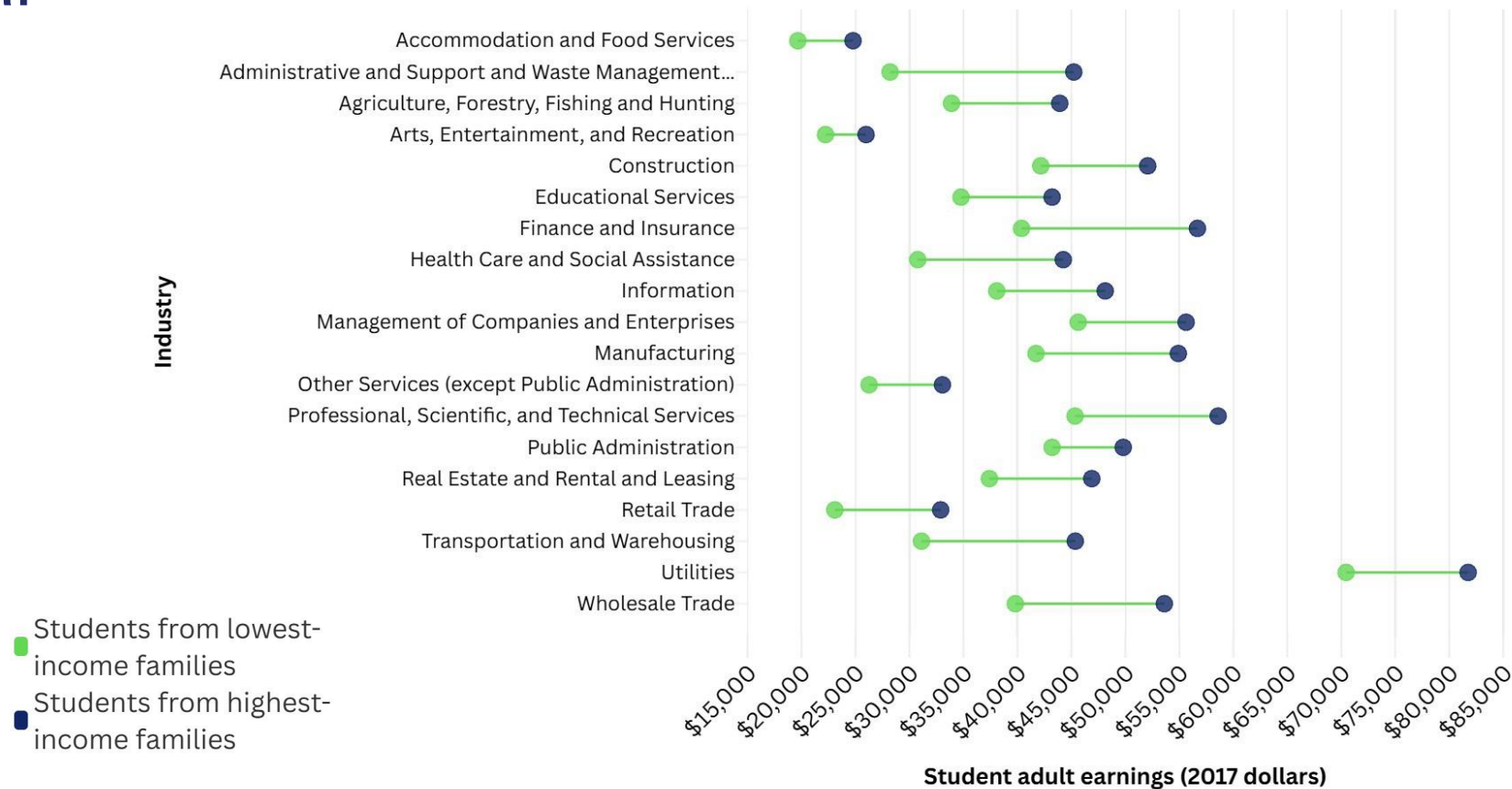
- Students from lowest-income families
- Students from highest-income families

Degree program



# AVERAGE SOCIOECONOMIC EARNINGS DISPARITIES

## BY INDUSTRY



# TAKEAWAYS AND NEXT STEPS

**Students who earned higher educational degrees went on to earn more, on average.**  
This was true for students of all economic backgrounds.

**Specific degree program and industry mattered** — some were higher-earning than others for all student groups.

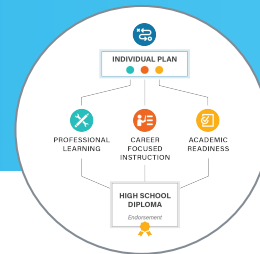
**Students from lower-income families** were less likely to attain higher degrees or work in higher-earning industries.

**Even with the same educational degree, degree program or industry of employment,** students from lower-income families earned less than those from higher-income families, on average.

# CCPE Workgroup Memo



# Elevating Key Challenges in CCPE



## Challenge #1

### Partnerships for Success

- Rural distances and employer availability
- Marketing to industry
- Dual credit partnerships and credentialing
- Communicating CCPE, expanding awareness

## Challenge #2

### Operations of Implementation

- Funding and grants
- High counselor caseloads
- Scheduling/60 hour requirement for career development experiences
- Ownership of components
- Time and data intensive
- Transportation

## Challenge #3

### Student Recruitment, Access and Equity

- Recruitment practices
- District resourcing determines access
- Student characteristics impacting their pathway access (ex., unpaid teacher or CNA pathways more female)
- Currency for students

## Challenge #4

### CCPE Approval Process

- Cumbersome application process, particularly in team-based challenges
- Data collection and application component parts delay implementation

**“Implementing CCPE is  
the work of shifting  
human systems.”**

*-CCPE workgroup member, director of innovation  
and learning at a large suburban district*

# Promising Local Practices to Address CCPE Challenges

## Facilitating partnerships is “the work of shifting human systems”

- Consider a continuum approach for industry participation (Continuums for [IT](#), [Health Sciences](#), [Education](#), [Manufacturing](#))
- Bring multiple partners to the table to create shared vision and goals (use the [Career Development Experience Toolkit](#) to get started)

## Start with what you have and build trust with existing partners

- Value proposition: young, local talent accelerated toward a career with professional learning & school-based accountability
- Generate buy-in from teachers to empower them as CCPE champions by creating plug-and-play templates for things like Team Based Challenges

## Where employer partners are few and far between, creativity is key

- Consider virtual or school-based career development experiences (see examples of virtual [here](#) and school-based [here](#))
- Check out the ISBE [Work-Based Learning Employer Database](#)

# Systems Recommendations to Address Implementation Challenges

## Approval and Operations

- **Multi-year** approval timeline
- Align CCPE **applicant platform** to other similar programs like CTE
- Consider flexibility within the 60-hour CDE requirement, such as a **competency-based model**
- Utilize existing student-facing supports like **ISACorps** for advising
- Create a **portability code** for CCPE completers to smooth postsecondary transition

## Student Access and Equity

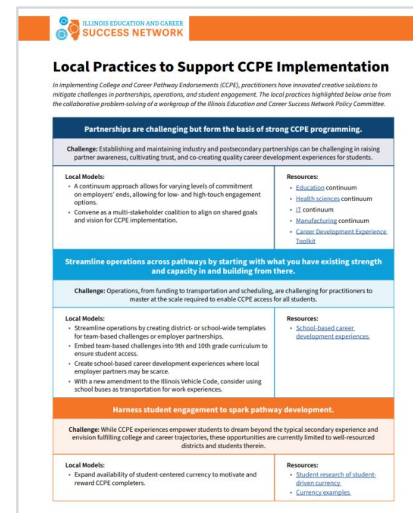
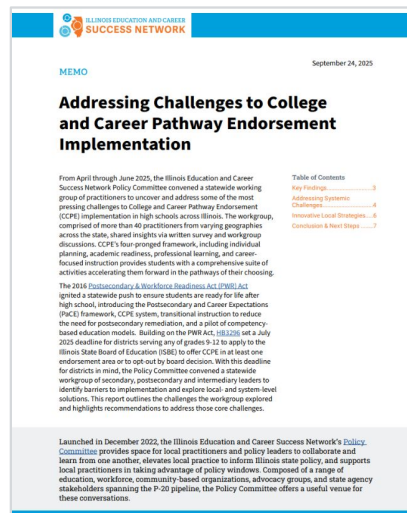
- Create **student-centered currency** ([examples](#))
- Launch a **comprehensive evaluation** of CCPE at its current scale to assess student participation, pathway availability, and outcomes

## Partnerships

- Create a '**Model Business Partnership**' template for districts to use, creating standard language & messaging for industry and postsecondary partners
- Target **micro grants** to districts with few area employer partners to develop virtual or school-based career development experiences
- Support educator **dual credit credentialing** with targeted funding for key pathway dual credit courses
- Establish a **CCPE module** for new businesses within DCEO and IDFPR licensure processes to increase awareness and engagement

# Elevating CCPE Recommendations

- Recommendations shared with practitioners at the ISAC College Changes Everything Conference in July 2025
- Success Network to promote recommendations and identify opportunities for implementation with agency partners (ICCB, ISBE)



Access the full [memo](#) and [one-pager](#) of district-level promising practices at [isuccessnetwork.org/policy-committee](https://isuccessnetwork.org/policy-committee) & share with relevant stakeholders

# State Policy Updates and Veto Session Preview

# New Resources

[Updated Model Programs of Study Guides](#) (published August 2025)

[Companion Guide](#) (published August 2025)

*What to know before reading*

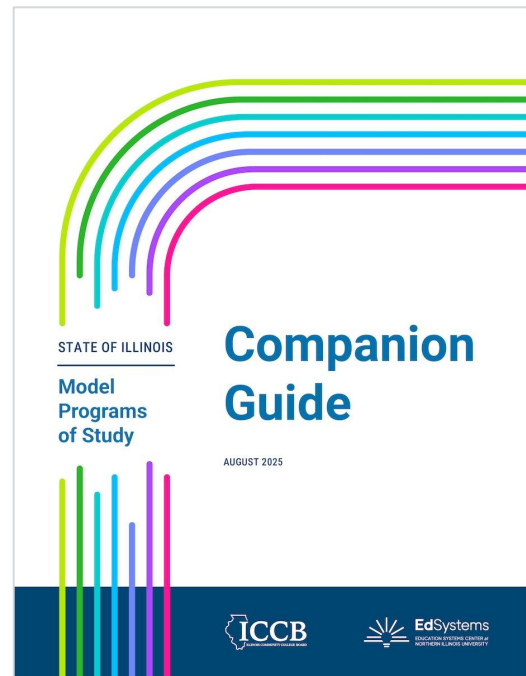
- Policy context
- Differentiating a career pathway, a program, and a program of study
- Key components of a program of study
- The intersection of CTE, dual credit, and work-based learning

*Support for design and implementation*

- A step-by-step process for understanding labor market information
- Implementation guidance and reflection questions
- Strategies for addressing student access gaps

*Identifying Next Steps*

- A comprehensive implementation checklist



# Dual Credit Quality Act (DCQA) Amendment

- [Public Act 104-0012](#)
- Ongoing Inter-Agency Collaboration
  - ISBE, ICCB, & IBHE all participated in the Midwestern Higher Education Compact (MHEC) Midwestern Dual Enrollment Policy Workshop in July
  - Multiple discussions reviewing DCQA Amendment & identifying implications for Dual Credit Committee, rule-making, resource development, & procedural changes
  - Shared goal is alignment across secondary & postsecondary
- Dual Credit Committee
  - Formed & has [met once](#)
  - ICCB website forthcoming



# ISBE: Proficiency Cut Scores Changes

- ISBE adopted unified performance levels and “right-sized” proficiency [benchmarks](#)
  - Includes changes to cut scores and alignment across different proficiency measurements
  - Updated to include ACT measures
  - Impacts proficiency, College & Career Readiness Indicator, automatic acceleration, & more
- **What's next:**
  - Will be included in October 2025 Illinois Report Card Release
  - Student Growth Percentile forthcoming for high schools
- ["Measurement for Student Success: ISBE's New Proficiency Scores and What They Mean for How We Measure Student Readiness"](#) (EdSystems post)

# Looking ahead to Veto Session

- [October 14–30](#)
- Potential relevant topics:
  - Adequate & equitable funding for higher ed
  - Community college baccalaureate



# Key ISAC Updates

## **FAFSA Designee ([Public Act 104-0013](#)):**

Beginning SY 25-26, each high school must designate a point of contact for FAFSA-related issues and communications who will also participate in relevant trainings.

**School Day FAFSA Support ([Public Act 104-0014](#)):** Beginning SY 25-26, each public high school must offer help during the school day for students to complete their portion of the FAFSA or Alternative Application. The school may determine the format for this help (e.g., in class, in a workshop).

## **One Click College Admit ([Website](#)):**

- Illinois' FREE direct admissions program into public universities & community colleges for general admission
- Removes traditional barriers: no essays, no application fees
- Eligibility is based on student's high school GPA
- This year two versions will be available:
  - 1.0 Class of 2026 (current seniors)
    - This will no longer be available after the 2025-2026 school year
  - 2.0 Class of 2027 (current juniors)
    - After the 2025-2026 school year, this will be the only direct admissions program administered by the State of Illinois

**CLASS OF  
2026**



**ONE CLICK  
COLLEGE ADMIT**

The easy, stress-free way to be admitted to Illinois public universities and community colleges! Follow the steps below to start watching the admission offers roll in!



**CREATE**  
your Common  
App account & profile



**SUBMIT**  
required info  
like GPA & address



**WAIT**  
for admission  
offers



**ACCEPT**  
an offer & start your  
college journey!

**IT'S THAT EASY!**

### Illinois Public Universities

- Chicago State University
- Eastern Illinois University
- Governors State University
- Northeastern Illinois University
- Northern Illinois University
- Southern Illinois University Carbondale
- Southern Illinois University Edwardsville
- Western Illinois University

### Illinois Community Colleges

- List can be found on [oneclickadmit.org](http://oneclickadmit.org)

**[OneClickCollegeAdmit.org](http://OneClickCollegeAdmit.org)**

**CLASS OF  
2027**



**ONE CLICK  
COLLEGE ADMIT**

The easy, stress-free way to be admitted to Illinois public universities and community colleges. No fees and no essays! Just complete the Opt-in Form and get ready to receive admission offers next fall!

#### **How it works:**

##### **OPT IN**

Fall of your **JUNIOR** year, your parent/guardian completes the Opt-In form, so you can participate in the program

##### **MATCH**

Your GPA is matched with the GPA admission requirements at partner public universities and community colleges.

##### **RECEIVE**

Fall of your **SENIOR** year, you will receive college admission offers right to your inbox.

##### **ACCEPT**

Accept offers from any university/community college you are interested in attending. **IT'S THAT EASY!**

#### Illinois Public Universities

- Chicago State University
- Eastern Illinois University
- Governors State University
- Illinois State University
- Northeastern Illinois University
- Northern Illinois University
- Southern Illinois University Carbondale
- Southern Illinois University Edwardsville
- University of Illinois Chicago\*
- University of Illinois Springfield
- University of Illinois Urbana-Champaign\*
- Western Illinois University

#### Illinois Community Colleges

- List can be found on [oneclickadmit.org](http://oneclickadmit.org)

*\*Awareness and Outreach*

**[OneClickCollegeAdmit.org](http://OneClickCollegeAdmit.org)**



# Looking Ahead Through SY26

# Policy Committee Topics for SY25-26

- Chronic absenteeism
- Changes to CTE Career Clusters
- Illinois Report Card Data
- Dual Credit Quality Act
- High school graduation requirements
- Workforce Pell and high-quality credentials

**What other topics would you like to see covered?**

**What types of work would you like to hear about from a Leadership Community?**

**Are there topics you would like to present on?**

# Additional Resources & Upcoming Events



# What We're Reading

[Online, On Purpose: A Framework for Building Impactful Dual Enrollment Experiences Through Online College Course](#) (National Alliance of Concurrent Enrollment Partnerships – NACEP)

[What Helped, What Didn't: Honest Feedback from Manufacturing Pathway Students](#) (EdSystems)

[Artificial Intelligence Resources](#) (Illinois Learning Technology Center)

[From Accountability to Opportunity Transforming High School Measurement](#) (Ed Strategy Group – ESG)

[Governor Playbook: Future-Ready Pathways](#) (All4Ed)

# Upcoming Events & Opportunities

**October 7, 3 p.m.:** To&Through Spotlight: Sparking Engagement in the Middle Grades ([Register](#))

**October 27, 12 p.m.:** I-WIN Community of Practice: Team-Based Challenges ([Register](#))

**November 12, 12 p.m.:** I-WIN Roundtable: Developing Regional Employer Partnerships ([Register](#))

**December 3, 9:30 a.m.:** Success Network Policy Committee Quarterly Meeting ([Register](#))

**Ongoing:** ISAC Professional Development Series ([Register](#))

## Open Surveys:

- Association for Career and Technical Education (ACTE) [CTE Accessibility Hub Survey](#)
- [Illinois Education and Care under Federal Policy Shifts Survey](#)

**Save  
the Date**

# **13th Annual Conference**

@ Moraine Valley Community  
College, Palos Hills, Illinois

**Thursday, February 26, 2026**



ILLINOIS EDUCATION AND CAREER  
**SUCCESS NETWORK**



ILLINOIS EDUCATION AND CAREER  
**SUCCESS NETWORK**

**Please fill out our Exit Survey.**

*See you at the Q4 Policy Committee  
meeting: December 3, 9:30–11 a.m.*

**Thank You!**



**EdSystems**  
EDUCATION SYSTEMS CENTER at  
NORTHERN ILLINOIS UNIVERSITY

