



Alignment Rockford  
*Supporting our public schools*

The text "Alignment Rockford" is displayed in a sans-serif font, with "Alignment" in green and "Rockford" in blue. A red graduation cap icon is positioned above the letter 'i' in "Alignment". A thin red horizontal line is drawn under the word "Rockford". Below this, the phrase "Supporting our public schools" is written in a blue, cursive script.

Alignment Rockford  
*Supporting our public schools*

A smaller version of the "Alignment Rockford" logo is located in the bottom right corner. It includes the red graduation cap icon, the green and blue text, the red underline under "Rockford", and the blue cursive tagline "Supporting our public schools".



# OUR HISTORY: CONTEXT FOR REFORM

# Rockford Public Schools

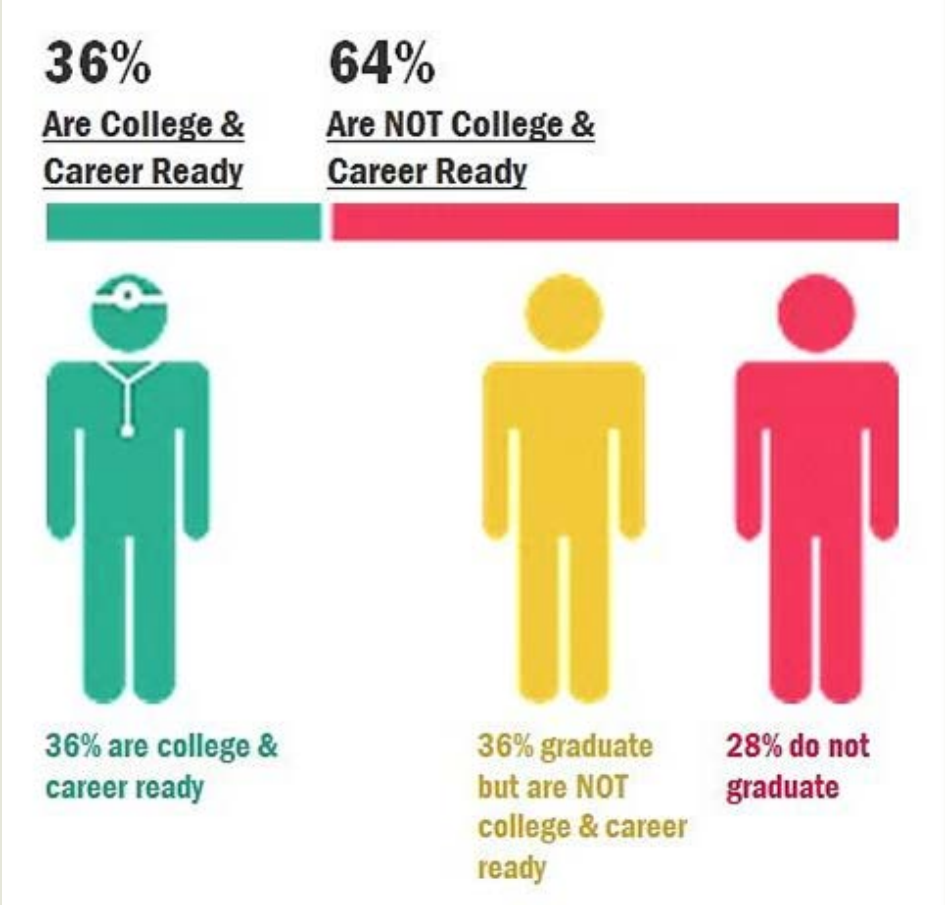
- Rockford Population: 150,843
- RPS Enrollment: 27,498
- 45 RPS Buildings
  - 29 Elementary Schools
  - 6 Middle Schools
  - 4 High Schools
  - 3 Alternative Schools
  - 3 Charter Schools
- 78.7% Low Income Households

# Context for reform

- Lawsuit, suburban flight, poverty growth
- Superintendent revolving door
- Chronic truancy
- “Dropout Factories”
- Low educational achievement
- Low college attainment
- Political silos
- “Change fatigue”



# College & Career Readiness





# Educational Demand

**24.7%**

of local  
jobs require  
a Bachelor  
Degree

**Only 19.8%**

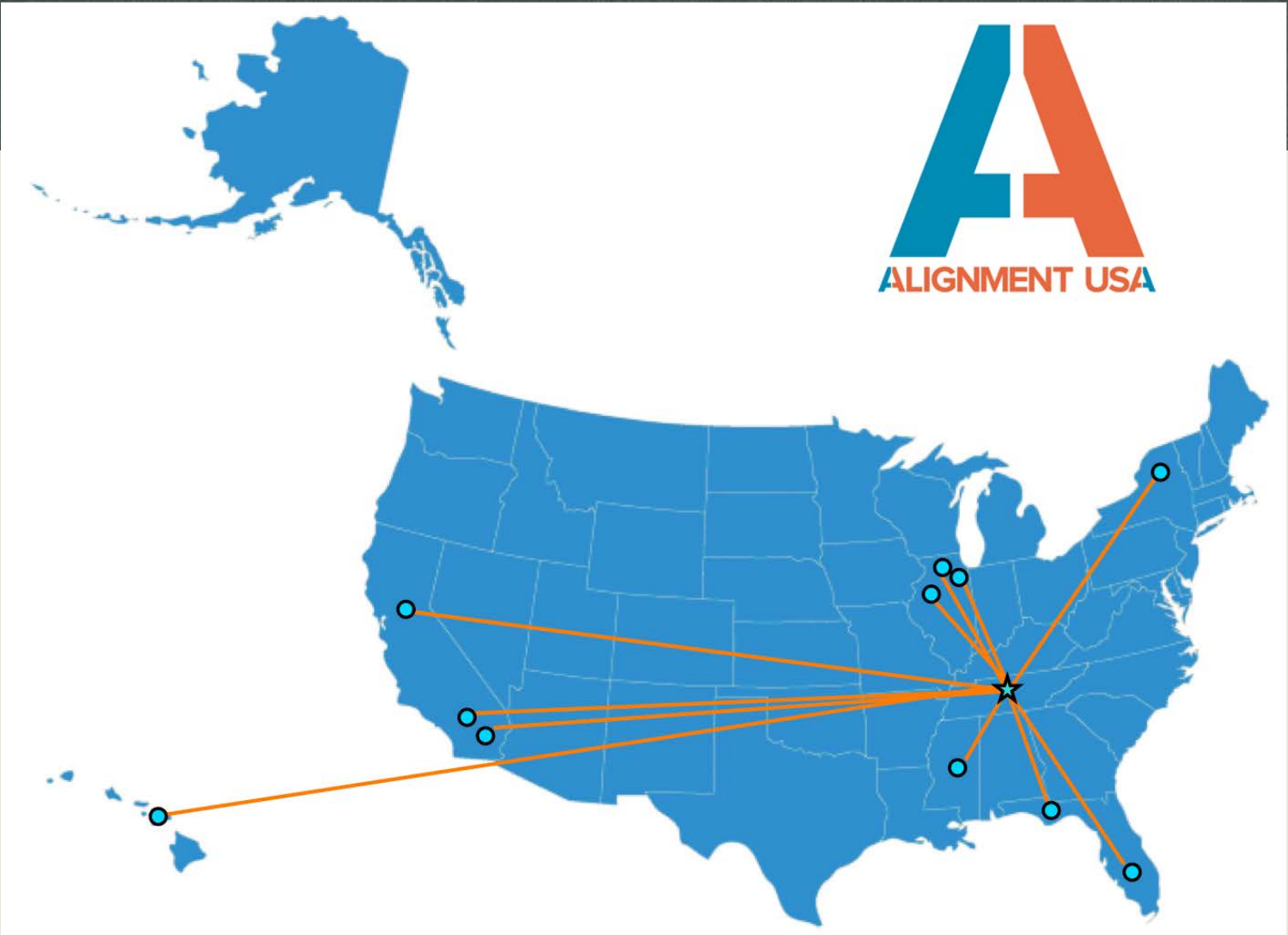
of Rockfordians have  
a Bachelor Degree

**“Rockford is an interesting case because it has a fairly low educational attainment rate, but the demand for educated labor isn’t that low.”**

*-Jonathan Rothwell, Sr. Research Fellow, Brookings Institution*



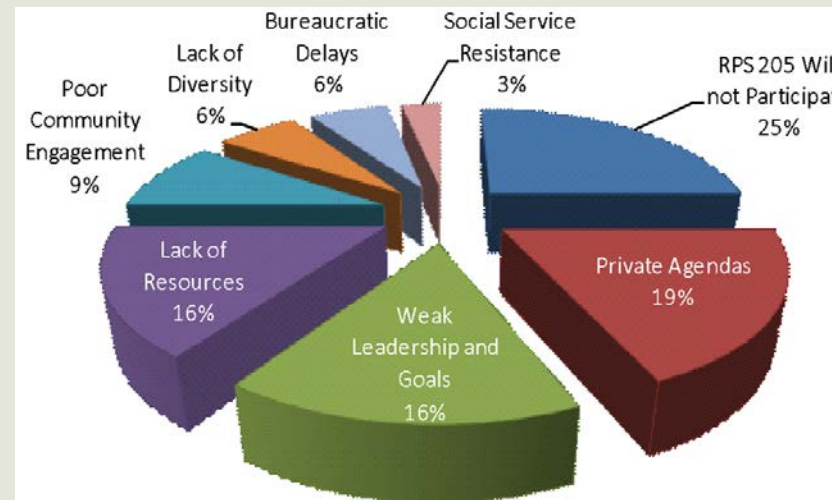
# DEVELOPING SOLUTIONS





# Opportunities/Threats Jan. 2010

- Truancy partnership and charter schools
- Need for sustainable success drives exploration of “systems” approach
- Alignment Nashville model identified
- Local barriers recognized



# Vision and Mission

## Vision

Alignment Rockford envisions *all* students graduating from high school with marketable employment skills *and* enrolling in post-secondary education. They are eager to live, work, learn, create and play in the Rockford Region as contributing adults.

## Mission

Alignment Rockford's mission is to *align community resources* in support of public school strategies to raise student achievement, improve the health and happiness of our children, and advance the economic and social well-being of our community.

# Teams support RPS205 greatest strategic needs

## Healthy Starts

Equip all families with tools needed to excel in school

## Career Awareness

Create system to increase student career awareness

## Academy Expo

Design a quality career exploration event

## Pathways

Connect curriculum to careers

## College Readiness

Create system to increase post-second attainment



# COMMUNITY EDUCATIONAL SYSTEM







**NON-PROFITS**



**BUSINESSES**





# GOVERNMENT AGENCIES



# SCHOOL DISTRICT GOALS AND STRATEGIES



# We are...

- Neutral Conveners
- Facilitators
- Bridge builders
- Process experts



**PRINCIPLES  
STRUCTURE  
PROCESS  
TECHNOLOGY**



# PRINCIPLES





**PRINCIPLES**

**ENABLE CHILDREN  
TO BE SUCCESSFUL**





**PRINCIPLES**

**ALIGN WITH  
SCHOOL SYSTEM'S  
PRIORITIES**

# PRINCIPLES

**SUPPORT  
SCHOOL SYSTEM'S  
STRATEGIC PLAN**



**PRINCIPLES**

**THE WORK IS  
GENERATIONAL**



# PRINCIPLES

**FOCUS ON  
THOSE WITH  
GREATEST NEED**

# PRINCIPLES

**TARGET ACADEMICS  
AND THE  
WHOLE CHILD**





**PRINCIPLES**

**COMPREHENSIVE AND  
MULTIFACETED  
APPROACH**



# HIGH SCHOOL REDESIGN

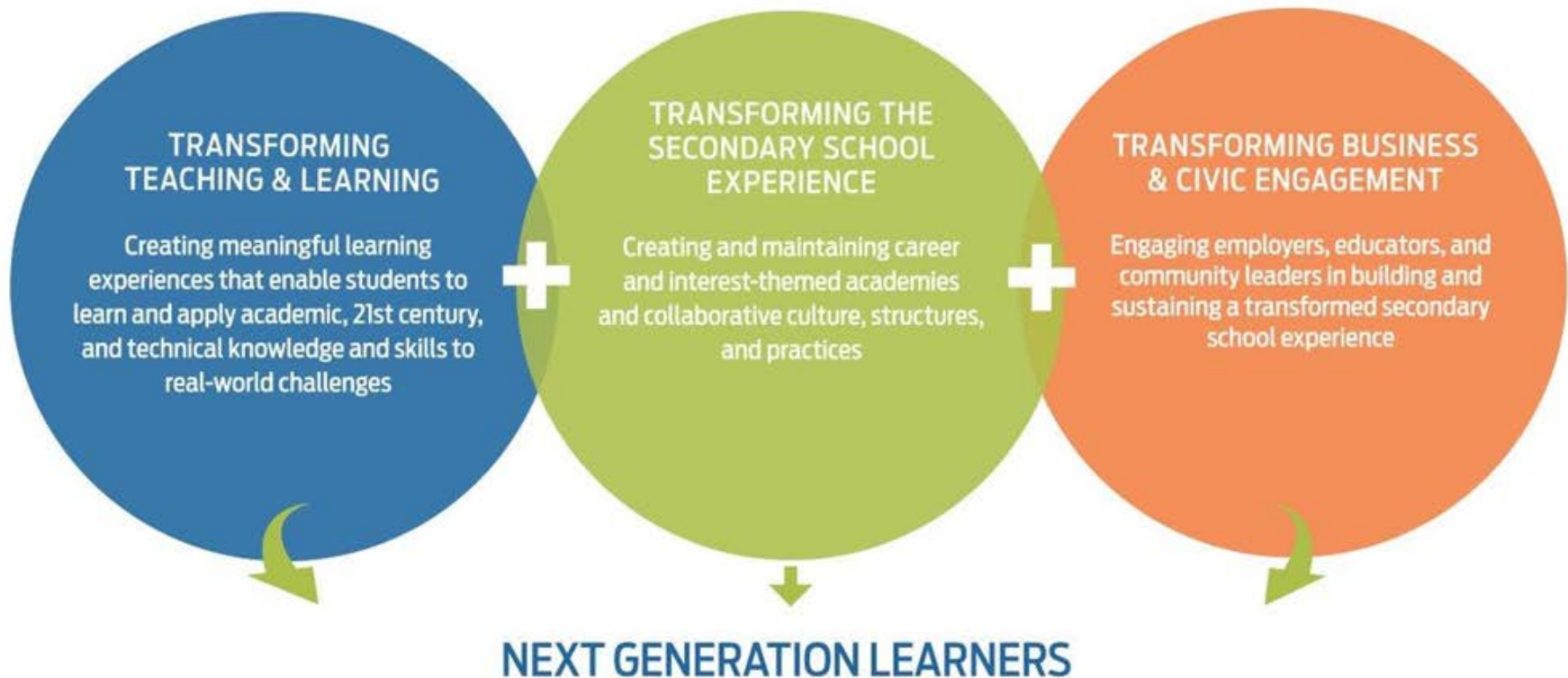
# High School Redesign

## The Solution

### COLLEGE & CAREER ACADEMIES

- 1 Small Learning Communities
- 2 College & Career Prep Curriculum for All
- 3 Integration with Business/Civic/Post-Secondary/Cultural Communities

# Ford Next Generation Learning







**COLLEGE  
& CAREER**

**ACADEMIES  
OF ROCKFORD**

## **BAMIT**

Business, Arts, Modern World Languages,  
and Information Technology

## **EMITT**

Engineering, Manufacturing, Industrial  
and Trades Technology

## **HPS**

Human and Public Services

## **HS**

Health Sciences

# Implementation Timeline

## 2010 - 2012

- Research into high school redesign
- Academy Model Approved by School Board

## 2012 – 2013 School Year

- Jefferson: Freshman Academy
- **500 students; 30 staff**

## 2013 – 2014 School Year

- Jefferson: all students are in an academy
- Roosevelt: all students are in modified academy
- Auburn, East, Guilford: Freshman Academy
- **3,600 students; 250 staff**

## 2014 – 2015 School Year

- All high school students are in an academy at all of our high schools
- **7,500 students; 500 staff**

# Academy Characteristics



- 1 Small Learning Communities
- 2 College & Career Prep Curriculum for All
- 3 Integration with Business/Civic/Post-Secondary/Cultural Communities

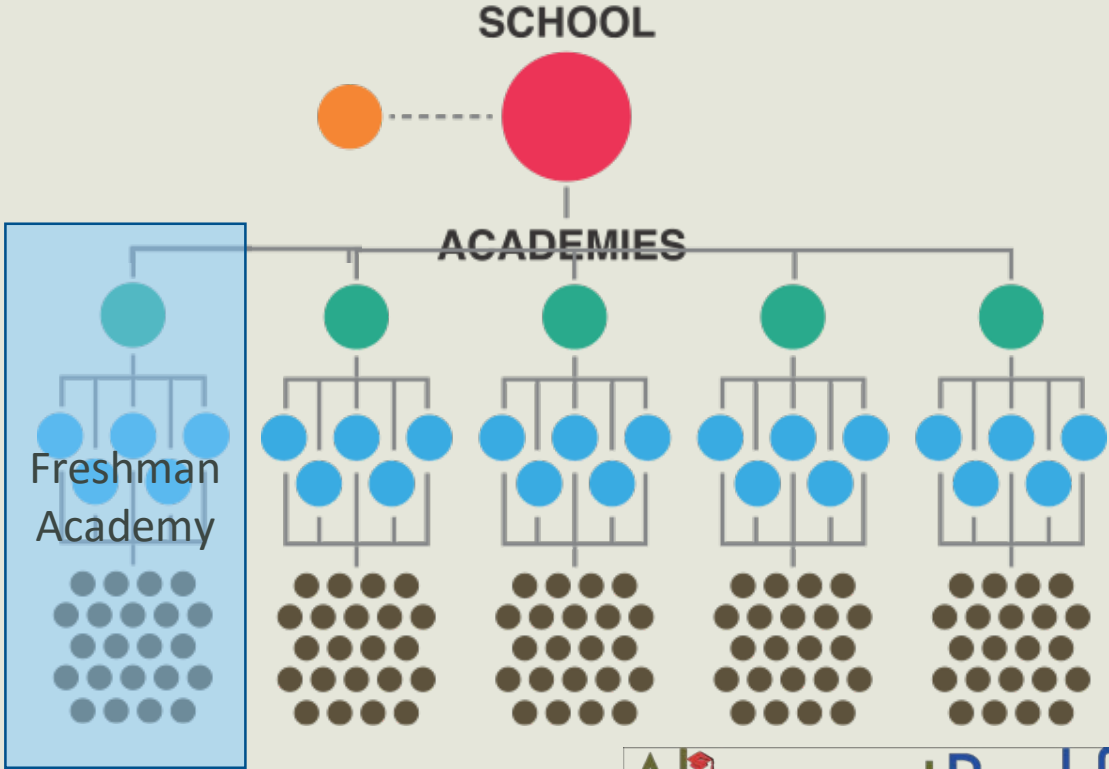




# Academy Characteristics

Academy  
High  
School  
Structure  
Grades  
10-12

- Executive Principal
- Academy Principal
- Academy Coach
- Faculty & Staff
- Students (250-400 per Academy)



# Academy Characteristics



- 1 Small Learning Communities
- 2 **College & Career Prep Curriculum for All**
- 3 Integration with Business/  
Civic/Post-Secondary/Cultural  
Communities



# 8<sup>th</sup> and 9<sup>th</sup> Grade Seminar

## 8<sup>TH</sup> GRADE

- Develop personal identity and esteem through interest inventories, skills assessments, and personal values analyses- *Who Am I?*
- Present long term financial and lifestyle goals- *What Do I Want?*
- Examine 16 Career Clusters and present research about a career of interest
- Develop a high school plan
- Explain process for graduating/accessing post secondary education/training

# 8<sup>th</sup> and 9<sup>th</sup> Grade Seminar

## 9<sup>TH</sup> GRADE

- Review 8<sup>th</sup> Grade work
- Compare and contrast potential careers
- Develop and present a 10 year plan- ***How Do I Get It?***
- Continued development of goal setting and decision making skills
- Access/analyze information regarding post-secondary training/education
- Choose academy & pathway
- Prepare job applications and resumes

GRADE	English/ Language Arts	Math	Science	Social Studies/ Sciences	PE/Health	General Electives	Pathway Courses
9	English 9	Algebra I Hon Geometry	Biology	World History	PE 9	Fine Arts Career/Tech Ed Foreign Languages Academic	Freshmen Seminar & Elective
10	English 10	Geometry Hon Geo Algebra II Coll Algebra	Chemistry	Elective	PE10/ Health	Fine Arts Career/Tech Ed Foreign Languages Academic	Pathway Course Year 1
11	English 11	Algebra II Coll Algebra Trigonometry Pre-Calculus Math Topics	Physics	US History	PE Elective	Fine Arts Career/Tech Ed Foreign Languages Academic	Pathway Course Year 2
12	English 12	Elective	Elective	Econ-Gov	PE Elective	Fine Arts Career/Tech Ed Foreign Languages Academic	Pathway Course Year 3



**Designing, building, and maintaining structures, machines, devices, systems, materials, and processes through a combination of scientific, economic, social, and practical knowledge and skills in order to solve problems to improve the world around us.**

(s) = semester

# = recommended for 9th grade

\*Advance Now - Rock Valley College

## High School Pathway Courses

Grade	Essential Pathway Courses	Recommended Electives
9	<ul style="list-style-type: none"> <li>• Freshman Seminar (s)</li> <li>• Semester Elective (s)</li> </ul>	<ul style="list-style-type: none"> <li>• Exploring Engineering (s) #</li> <li>• Machine Tool I &amp; II</li> </ul>
10	<ul style="list-style-type: none"> <li>• Introduction to Industrial Technology and Engineering</li> <li>• Principles of Aerospace</li> </ul>	<ul style="list-style-type: none"> <li>• Orientation to Drafting</li> <li>• Architectural Drafting/CAD I &amp; II</li> <li>• Automotive Technology I &amp; II</li> </ul>
11	<ul style="list-style-type: none"> <li>• AP Chemistry</li> <li>• AP Physics</li> <li>• AP Biology</li> <li>• AP Calculus</li> </ul>	<ul style="list-style-type: none"> <li>• Fabrication I &amp; II</li> <li>• Internship</li> <li>• World Languages (French, Spanish)</li> </ul>
12	<ul style="list-style-type: none"> <li>• AP Calculus</li> <li>• AP Physics</li> <li>• AP Chemistry</li> <li>• Computer Aided Design (AN - RVC)*</li> </ul>	

# Academy Characteristics



- 1 Small Learning Communities
- 2 College & Career Prep Curriculum for All
- 3 Integration with Business/  
Civic/Post-Secondary/Cultural  
Communities



# Academy Expo Career Exploration Event

- 2,100 students
- 130 booths
- 700 volunteers





# Academy Expo



# Sophomore Site Visits

75 businesses  
signed up to host  
visits

56 businesses  
were visited by  
students

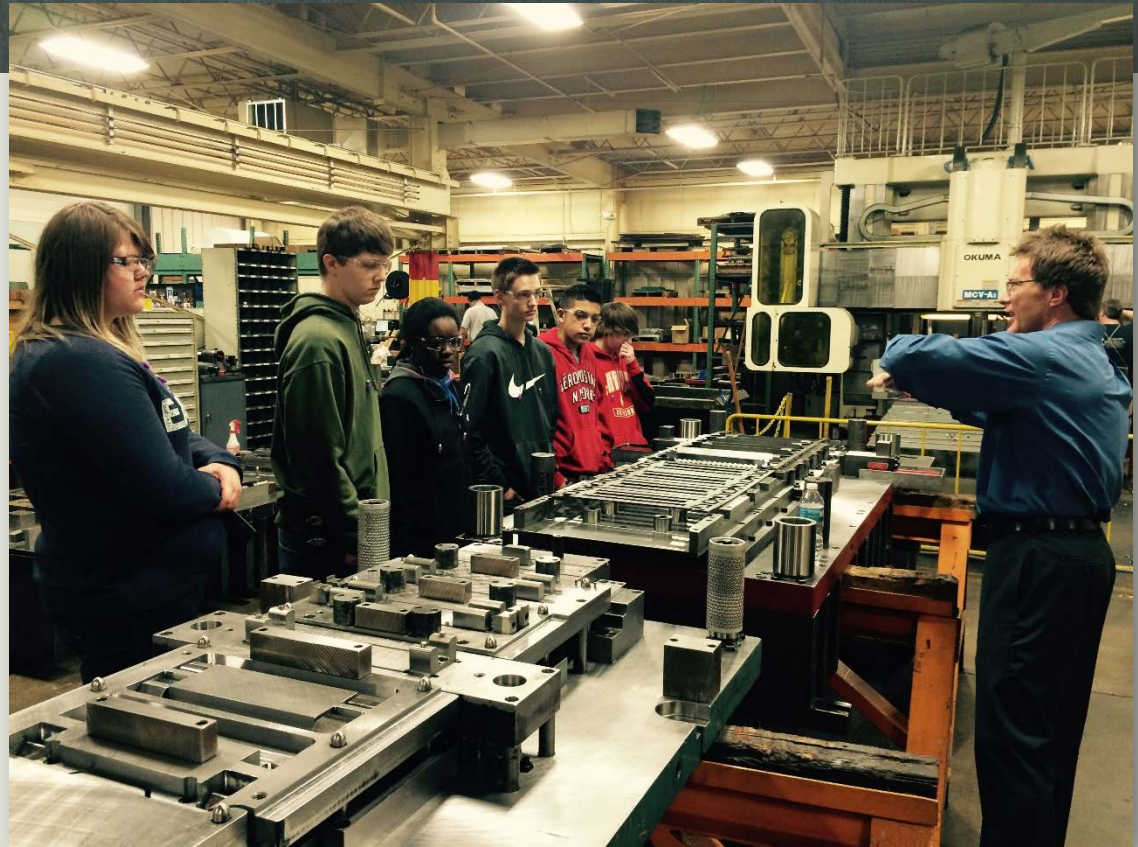


***“This helped me  
know even more what I  
want to become .”***



# Sophomore Site Visits

***“It helped me see a career that not only is in my pathway, but you don't need a college degree--a good paying job without a degree.”***



***“I learned about standards, expectations, insights and education, it gave me more career options.”***



# Student Job Shadow

Apply learning through practical experience that develops knowledge and skills necessary for success in careers and postsecondary education.



# CCRCs/ASTs



# College & Career Readiness Councils

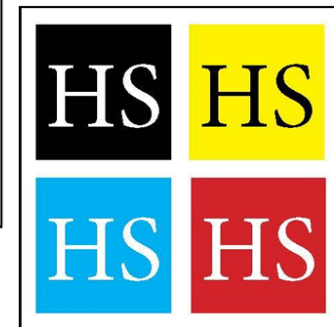
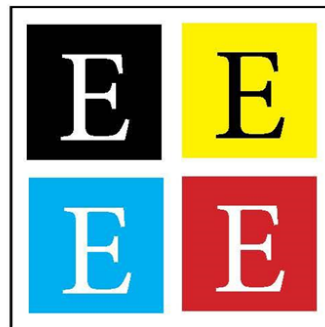
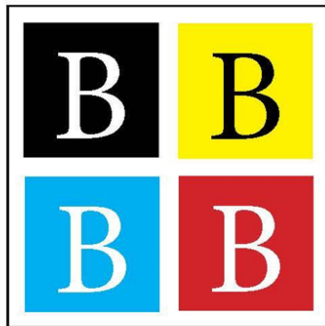


**COLLEGE  
& CAREER**  
**ACADEMIES**  
**OF ROCKFORD**

## College and Career Readiness Councils (CCRCs)

Community members who work as advisors to the Academy Leadership teams.

Each type of Academy from all schools meets at this time with their Academy Leadership teams.



CCRCs meet one time per quarter, and discuss major projects by Academy/by school and work with community liaisons to work through issues and needs (from how to develop a project's curriculum to physical needs like wood or equipment).

# Academy Support Teams

- Provide Curriculum Guidance
- Facilitate In- & Out-of-School Experiences
- Support Equitable Resource Allocation
- Identify and Communicate Academy Needs
- Support Parent Involvement
- Recruit Community Members
- Develop Project Ideas
- Monitor Student Performance and Design Solutions



# Senior Capstone Projects



# Connected Pathways

**On RAMP** →  
*(K - 8)*

**College & Career  
Academies of Rockford** →  
*(three course sequence/  
articulated/dual credit)*

**Postsecondary Attainment** →

**Local Careers**

# Student Leadership





# IMPACT

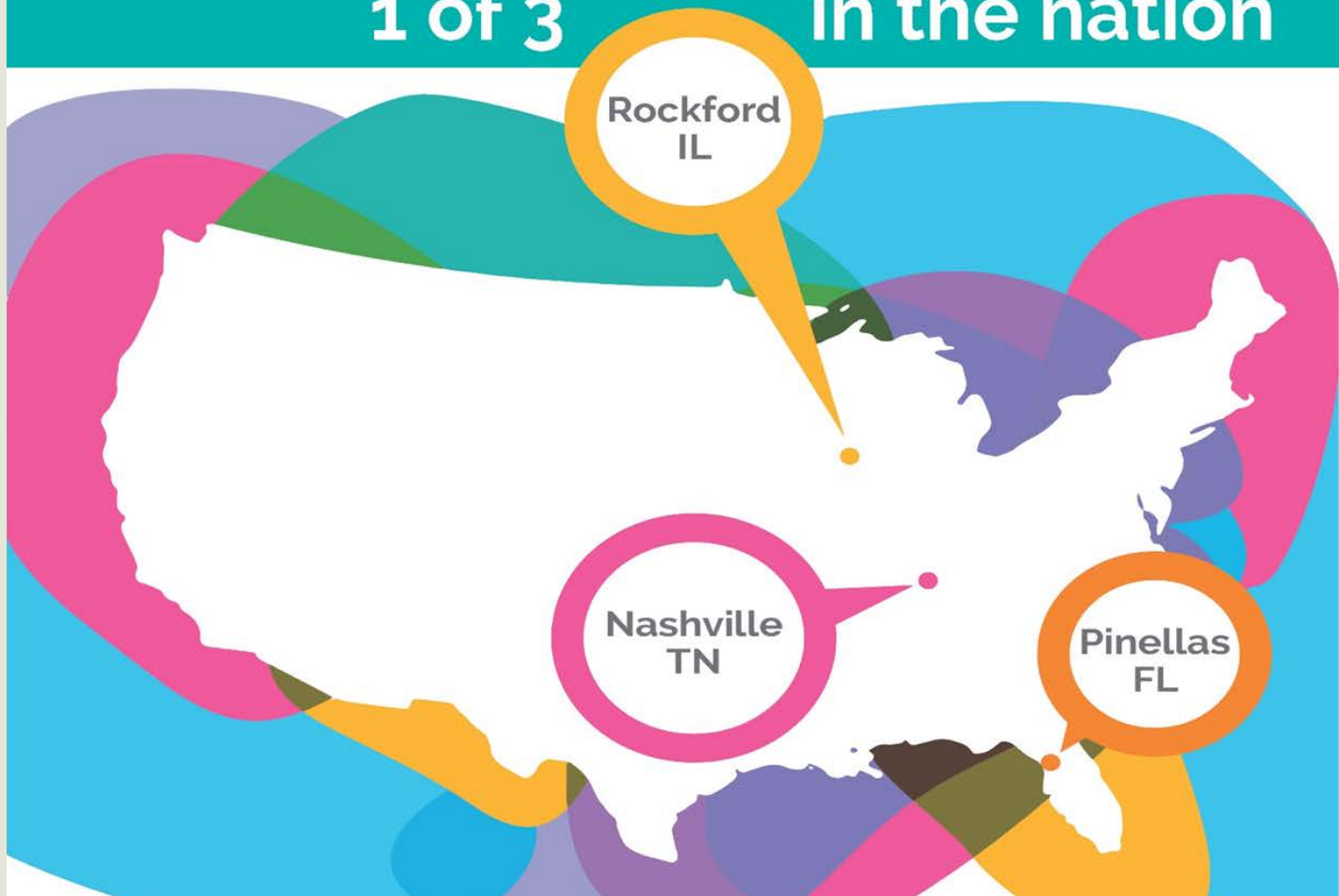


# ROCKFORD

A Ford Next Generation Learning  
**MODEL COMMUNITY**

1 of 3

in the nation





ROCKFORD PUBLIC SCHOOL DISTRICT

HAS SEEN AN INCREASE OF  
**NEARLY 10%**  
IN GRADUATION RATES  
AMONG MINORITY STUDENTS THE PAST THREE YEARS.



ROCKFORD PUBLIC SCHOOL DISTRICT

HAS SEEN AN INCREASE OF  
**6% OVERALL**  
IN GRADUATION RATES



# AUSA Rockford Learning Lab

March 21 - 23, 2017







**Alignment** **Rockford**  
*Supporting our public schools*

**Alignment** **Rockford**  
*Supporting our public schools*