



QUALITY PATHWAYS INDICATORS

Jon Furr, Andrea Messing-Mathie
EdSystems

Great Lakes College and Career Pathways Partnership

- Investment by the Joyce Foundation
 - Madison WI
 - Columbus OH
 - Rockford IL
 - Northwest Suburbs IL
- Overarching objectives:
 - To improve the education and employment outcomes of young people in a small number of diverse communities by expanding and strengthening their existing pathway systems from early high school to college and careers; and
 - To gather and disseminate lessons learned about what it takes to advance systemic pathway development and improve outcomes, so that this learning may inform similar efforts across the country.





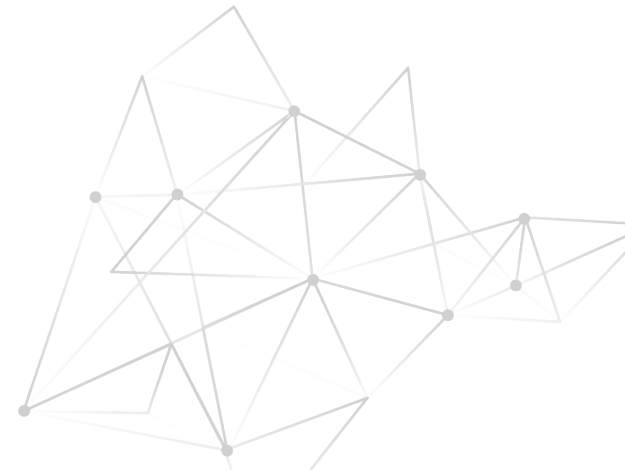
Communities Informing Communities

Initial Hurdles

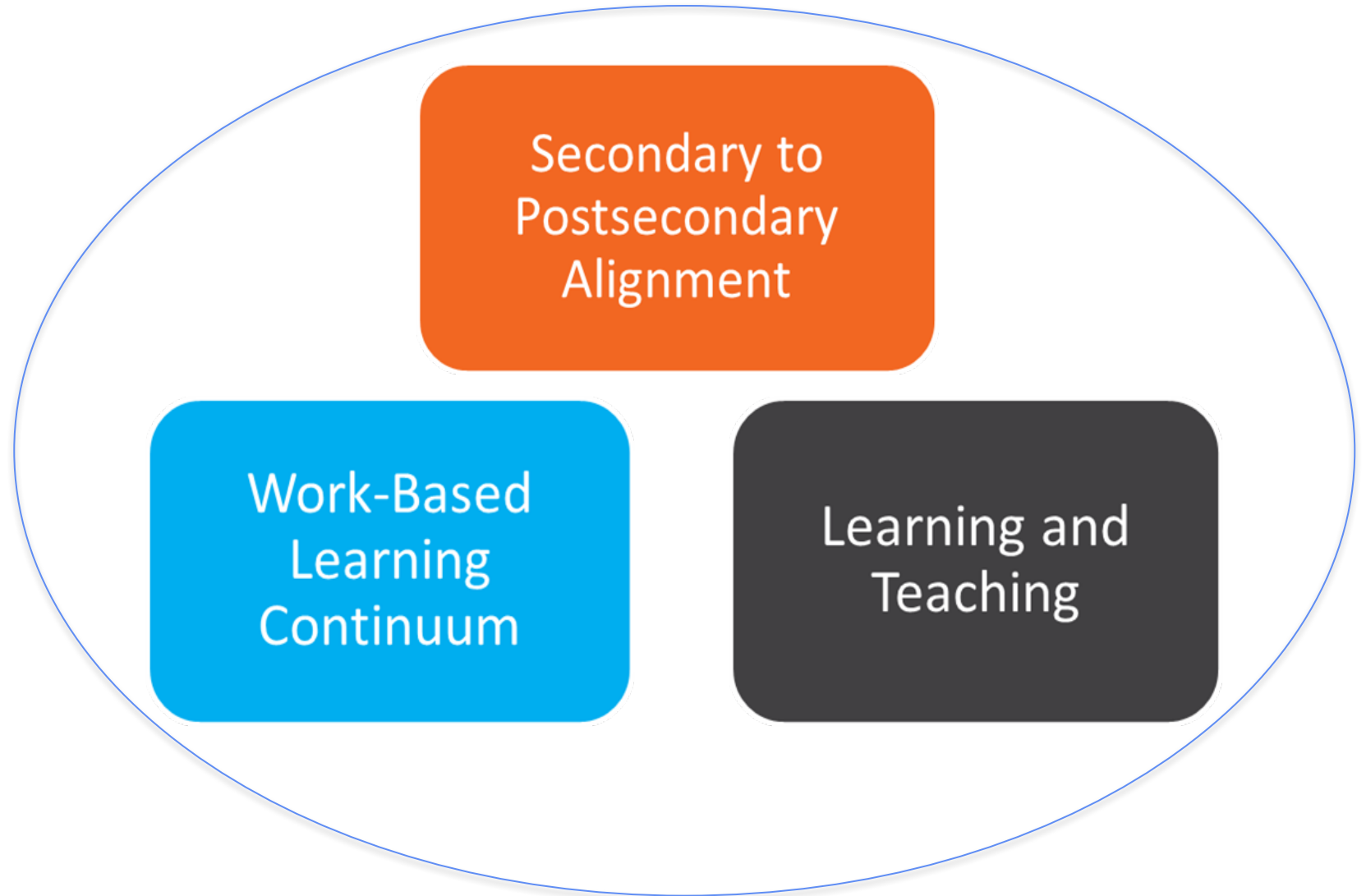
- The initial hurdles to organize communities around college and career pathway implementation:
 - Aligning community partners
 - What Sectors?
 - What Pathways?

What's Next?

- What do these quality systems look like? What are the indicators of quality college and career pathway systems?



What to quality systems look like?

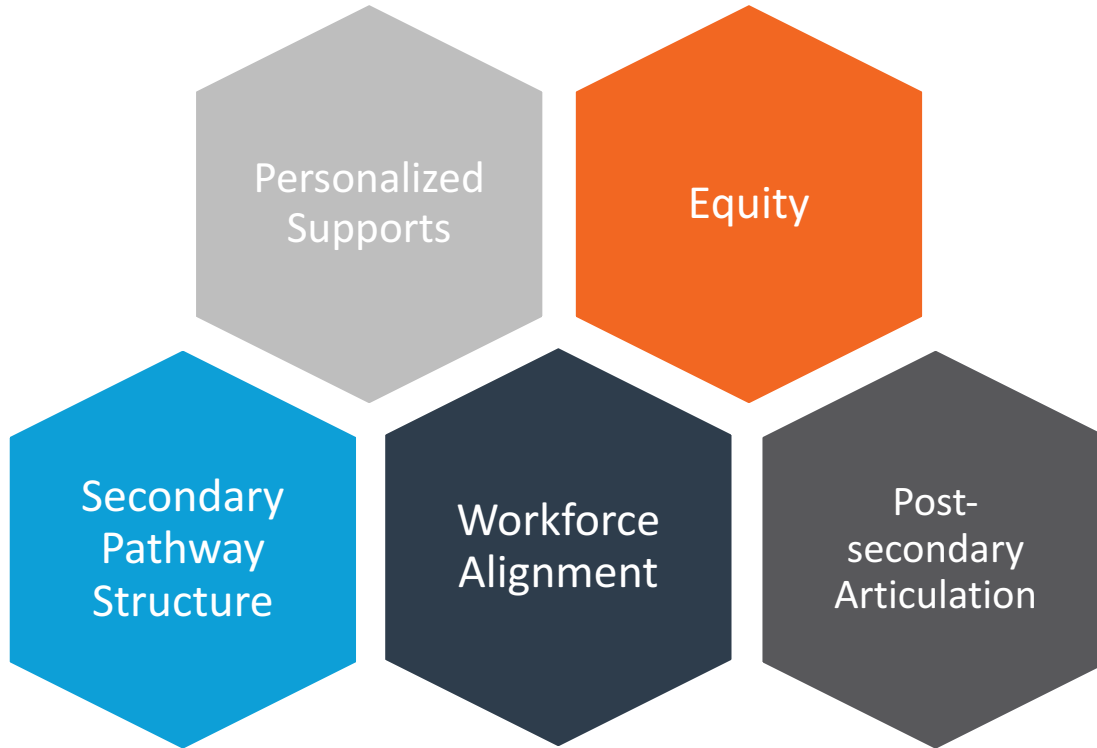





Secondary through Postsecondary Attainment: What to look for?

- Pathways engage students in rigorous academics
 - Real-world technical skills, work-based learning, and personalized supports that span grades 9-12 and extend and align through a postsecondary credential with value in the labor market
- Pathways are designed to appeal to and engage ALL students
 - Prepare them for success in the full range of postsecondary options and support their transition to a rewarding career
- Pathways are designed to meet employer needs for talented young professionals

Secondary to Postsecondary Alignment

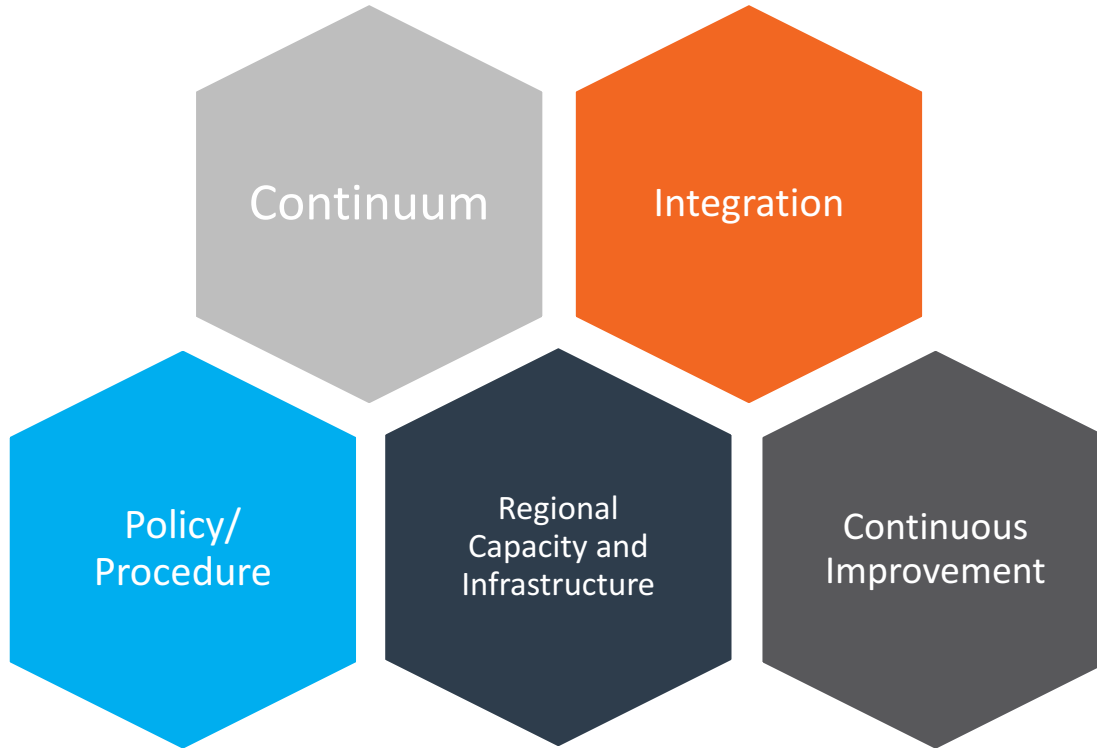




Work-Based Learning Continuum: What to look for?

- All students participate in a personalized and coordinated continuum of WBL experiences
 - These are designed to help them master and demonstrate academic, technical, and 21st Century skills to enhance their success in college and career.
- WBL occurs in-person and online, and at the workplace, the community, and at school.

Work-based Learning Continuum





Learning and Teaching:

What to look for?

- Learning is inquiry and project-based: It is outcome-focused, rigorous, relevant, and collaborative
- The collaborative helps to develop the pathway in a way that guides assessment, curricular, and instructional planning.
- Students have access to up-to-date facilities and equipment
- Instructors bring techniques from the field into the classroom
- Pathways provides real world connections to the labor market
- Employer partners are actively involved in the design and assessment of tasks and projects

Learning and Teaching





How are you thinking about quality in your community?



THANK YOU



CONSULTANCY SESSION ROOMS

3:30-4:45pm

- Aurora (Main Dining Room)
- Peoria (Ballroom 7)
- Northwest Suburbs (Ballroom 6)
- NCI/Starved Rock (Ballroom 5)