



## Data: What is it good for?

How to use data to tell our story  
and inform our decisions



@EdSystemsNIU  
@advanceillinois  
**#IL60by25**



# THINGS WE'LL CONSIDER TODAY

- *Why* using data is important
- *What* our data include and may tell us
- *Where* you can obtain data
- *How* we can develop and embed a practice of using data
- *Who* needs to know *what* and *when* to make decisions

---

# CONTEXT

WHY USING DATA IS IMPORTANT

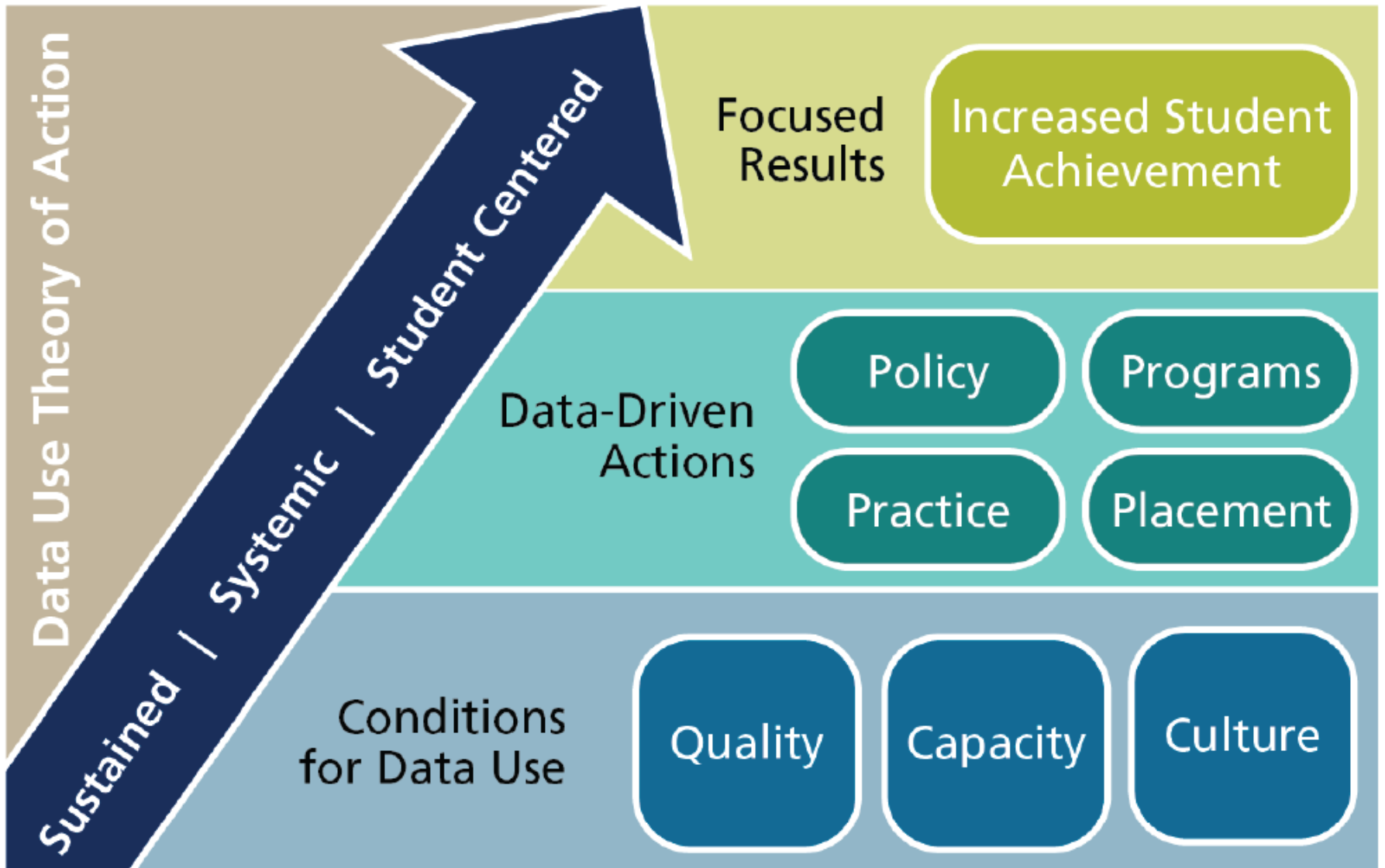
---



**#IL60by25**

*@EdSystemsNIU*  
*@advanceillinois*

# WHAT'S THE BIG IDEA?



# DATA FOR DUAL PURPOSES

Data can both serve as a window *looking out* to develop insights into students, schools, districts, and the region as a whole...



...and as a mirror to *look in* and gather insights about our own practices and systems.

# SHARED MEASUREMENT HELPS US...

- Build a shared understanding of what's happening in the region
- Know how we're doing compared to benchmarks we've set
- Understand what's working or not working well
- Shine a light on areas for celebration, as well as for growth
- Construct narratives to share our work with a range of stakeholders
- Bring an equity lens to our work



@EdSystemsNIU  
@advanceillinois

# BUILDING A COLLECTIVE DATA MUSCLE

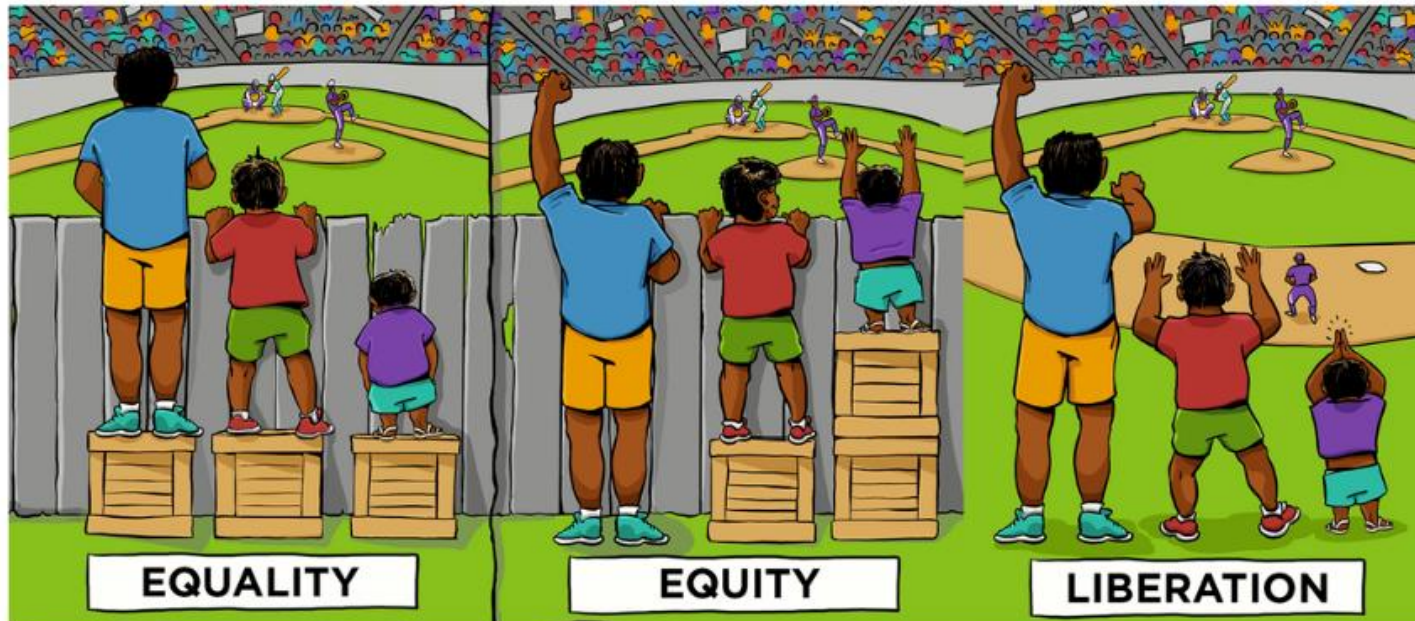
To build a collective *culture of engagement* to *inform practice*:

- Commitment across all stakeholders
- Clearly articulated vision for data use
- Accountability
- Culture of collaboration and trust
- Modeling of data use by leaders at all levels
- Commitment to improvements in instruction and programming



# ENGAGING OUR EQUITY LENS

Any system produces what it was designed to produce.



@EdSystemsNIU  
@advanceillinois  
#IL60by25



---

# WHERE TO LOOK

HIGHLIGHTING DATA RESOURCES

---



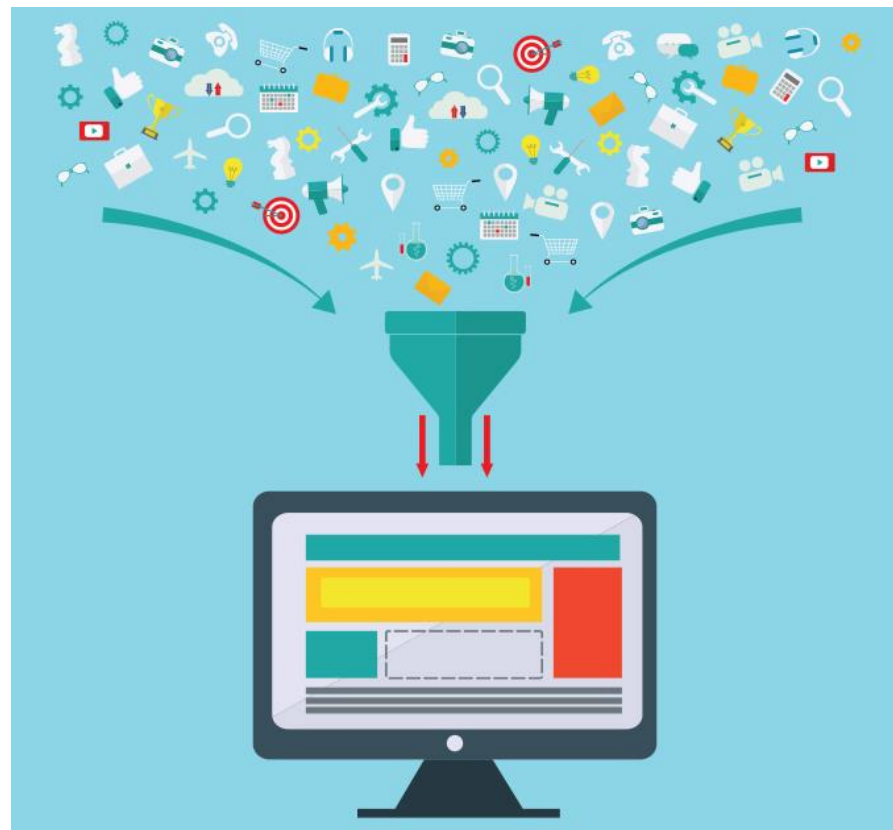
**#IL60by25**

*@EdSystemsNIU*  
*@advanceillinois*

# WHERE TO LOOK FOR DATA

## Some Public Sources

- Illinois 60 by 25 Network Dashboard ([Link](#))
- Advance Illinois Data Desk ([Link](#))
- IL Report Card ([Link](#))
- ILCollege2Career ([Link](#))
- *Coming Soon:* Illinois Postsecondary Profiles



---

# YOU'VE GOT DATA, NOW WHAT?

PRACTICING PROTOCOLS

---

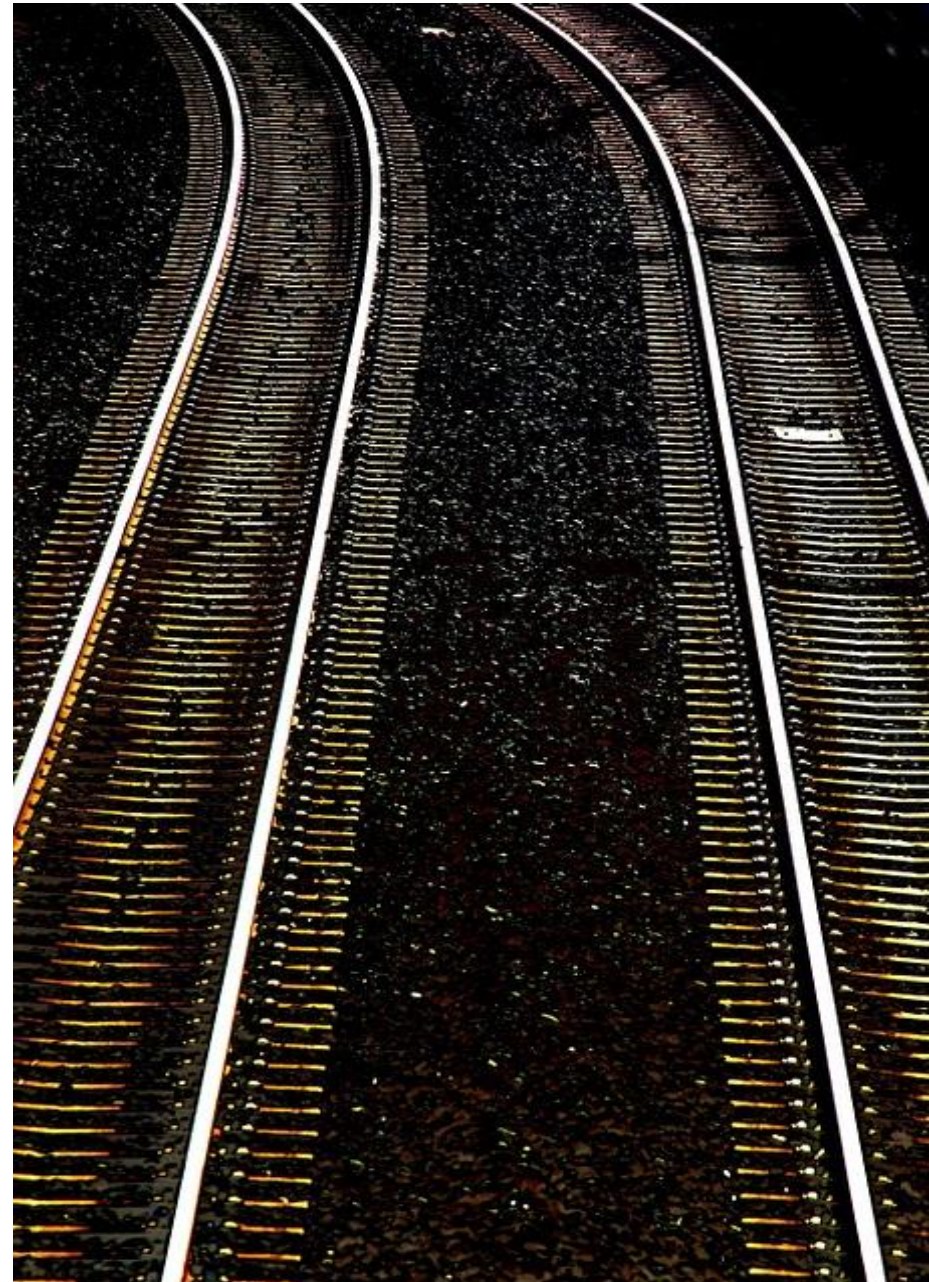


**#IL60by25**

*@EdSystemsNIU*  
*@advanceillinois*

# PROTOCOL PRACTICE GOALS

- *Develop* shared understanding of some metrics of interest
- *Practice* observing and interpreting data
- *Consider* the narratives we may begin to construct around these data
- *Practice* identifying strategies in response to data
- *Consider* implications for how to bring data into decision-making processes



@advanceillinois  
@EdSystemsNIU

**#IL60by25**



# GUIDING QUESTIONS WHEN REVIEWING DATA

- What are the stories/narratives you might tell/understand from these data?
- What questions will various stakeholders have?
- What can each district learn from one another?
- What do these data invite us to celebrate?
- What's important to us as a region?
- How do we understand success as region? How do we know when we're on track?
- How do we act on our data?
- What implications for equity arise?
- Who needs to know what? When?

# GROUND RULES FOR COLLABORATIVE DATA REVIEW

Think of using data like a *flashlight*...



...instead of a *hammer*.

# ONE MORE USEFUL RULE



#IL60by25

@EdSystemsNIU  
@advanceillinois

# PROTOCOL PRACTICE

What are we using today?

Placemat Protocol

Great for internal meetings

Can be used with one dataset or more

Useful for building collective understanding

Here's What, So What, Now What

Great for newbies

Simple and adaptable

Can be used for individual and/or collective reflection

Data Walk


Great for larger groups

Works well with multiple datasets/visuals

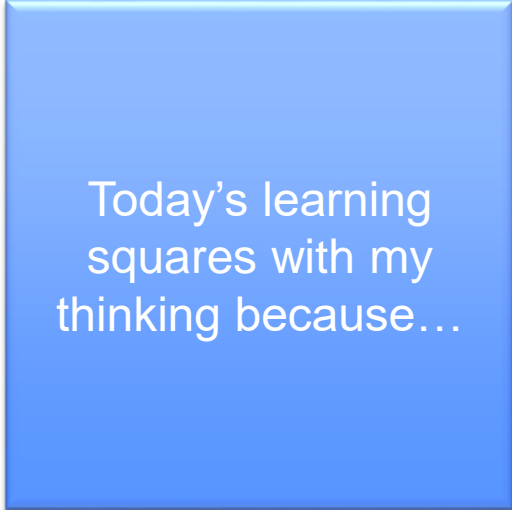
Useful for public reporting and reflection




# REFLECTING ON THE WORKSHOP

An orange circle with a slight gradient and a drop shadow.

Something still  
circling in my  
head is...

A blue square with a slight gradient and a drop shadow.

Today's learning  
squares with my  
thinking because...

A gray triangle with a slight gradient and a drop shadow.

Three  
important  
points from  
today are...



---

**THANK YOU**

---