



Cradle to Career Community Dashboards

2019 Plans & Updates

Charlie Rosemond

Education Systems Center at NIU



OBJECTIVES FOR TODAY'S PRESENTATION

- Provide **background** information on the Dashboards
- Share the **current status** of the Dashboards
- Outline **planned 2019 updates** for the Dashboards
 - New data and levels of disaggregation
 - User experience design refresh
 - Leadership community engagement



BACKGROUND



DASHBOARD TEAM



NORTHERN ILLINOIS UNIVERSITY

Center for Governmental Studies

Outreach, Engagement, and Regional Development



Education Systems Center

NORTHERN ILLINOIS UNIVERSITY



The Cradle to Career Community Dashboards are a resource for 60 by 25 Network Leadership Communities to:

- Analyze regional information on education and workforce system characteristics and performance
- Track progress on postsecondary education attainment and education-to-career objectives
- Benchmark community efforts against state averages

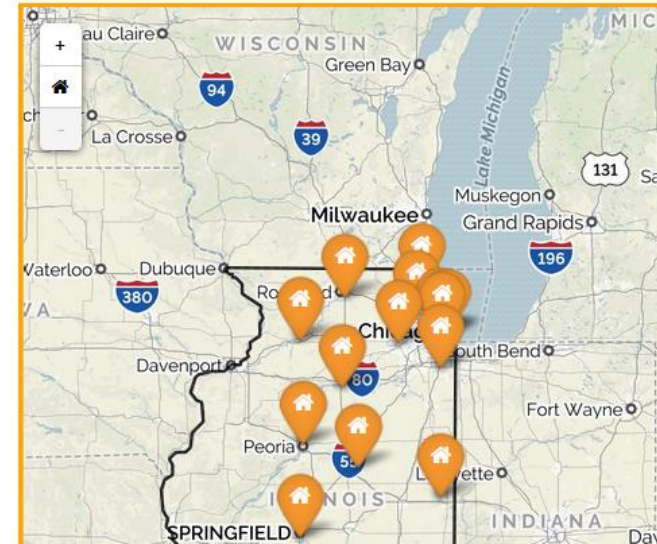
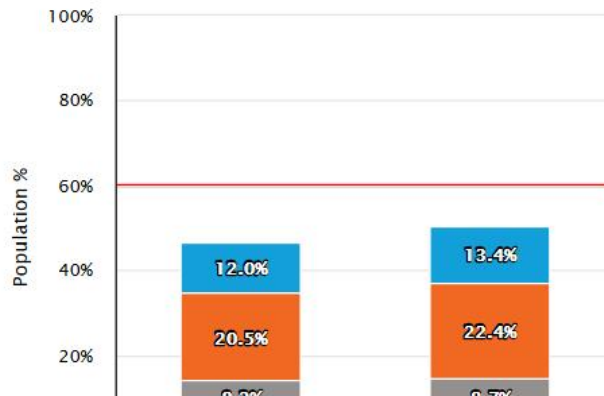
State of Illinois

- Community and Labor
 - Community Characteristics
 - Labor Force Characteristics
 - Commuter Information
- Early Childhood
- Elementary Through 9th Grade
- College Readiness
- Supply and Demand

Education Attainment (25-64 Year Olds)

Export

Source: US Census Bureau



A RESOURCE FOR LEADERSHIP COMMUNITIES TO:

- **Analyze** regional information on education and workforce system characteristics and performance
- **Track** progress on postsecondary education attainment and education-to-career objectives
- **Benchmark** community efforts against state averages

CURRENT STATUS

DASHBOARDS BY THE NUMBERS

- **1 state-level dashboard**
- **15 communities** across Illinois
- **10 data sources**
- **5 data indicator categories** spanning the cradle-to-career spectrum, including:
 - Community and Labor
 - Early Childhood
 - Elementary through 9th Grade
 - College Readiness
 - Supply and Demand
- **41 different data indicators**



CURRENT DATA SOURCES



PLANNED 2019 UPDATES

NEW DATA AND LEVELS OF DISAGGREGATION

HIGHER EDUCATION SUPPLY



Select the Year:

- 2014
- 2015
- 2016

Select the Region:*

Southwestern

Any Specific Community College District?

Illinois Eastern CC District
Kaskaskia CC District
Lewis and Clark CC District
Out of State

Any Higher Ed Institution in Particular?

Blackburn College
Columbia College (MO)
Greenville University
Illinois Eastern - Frontier
Illinois Eastern - Lincoln Trail
Illinois Eastern - Olney Central
Illinois Eastern - Wabash Valley
Kaskaskia College
Lewis & Clark Community College
Lindenwood University (MO)
Maryville University of St. Louis
McKendree University
Missouri Baptist University (MO)
Park University (MO)

Degree Level(s)?

- 1-2 Year Certificate
- 2-4 Year Certificate
- Associates
- Bachelors
- Doctoral Other
- Doctoral Professional Practice
- Doctoral Research
- Less than 1 Year Certificate
- Masters
- Post-Baccalaureate Certificate
- Post-Masters Certificate

CIP Selection:

Accounting and Business/Management.
Accounting and Computer Science.
Accounting Technology/Technician and Bookkeeping.
Accounting.
Acting.
Administrative Assistant and Secretarial Science, General.
Adult and Continuing Education Administration.
Advanced General Dentistry.
Agribusiness/Agricultural Business Operations.
Agricultural Business and Management, General.

Select :

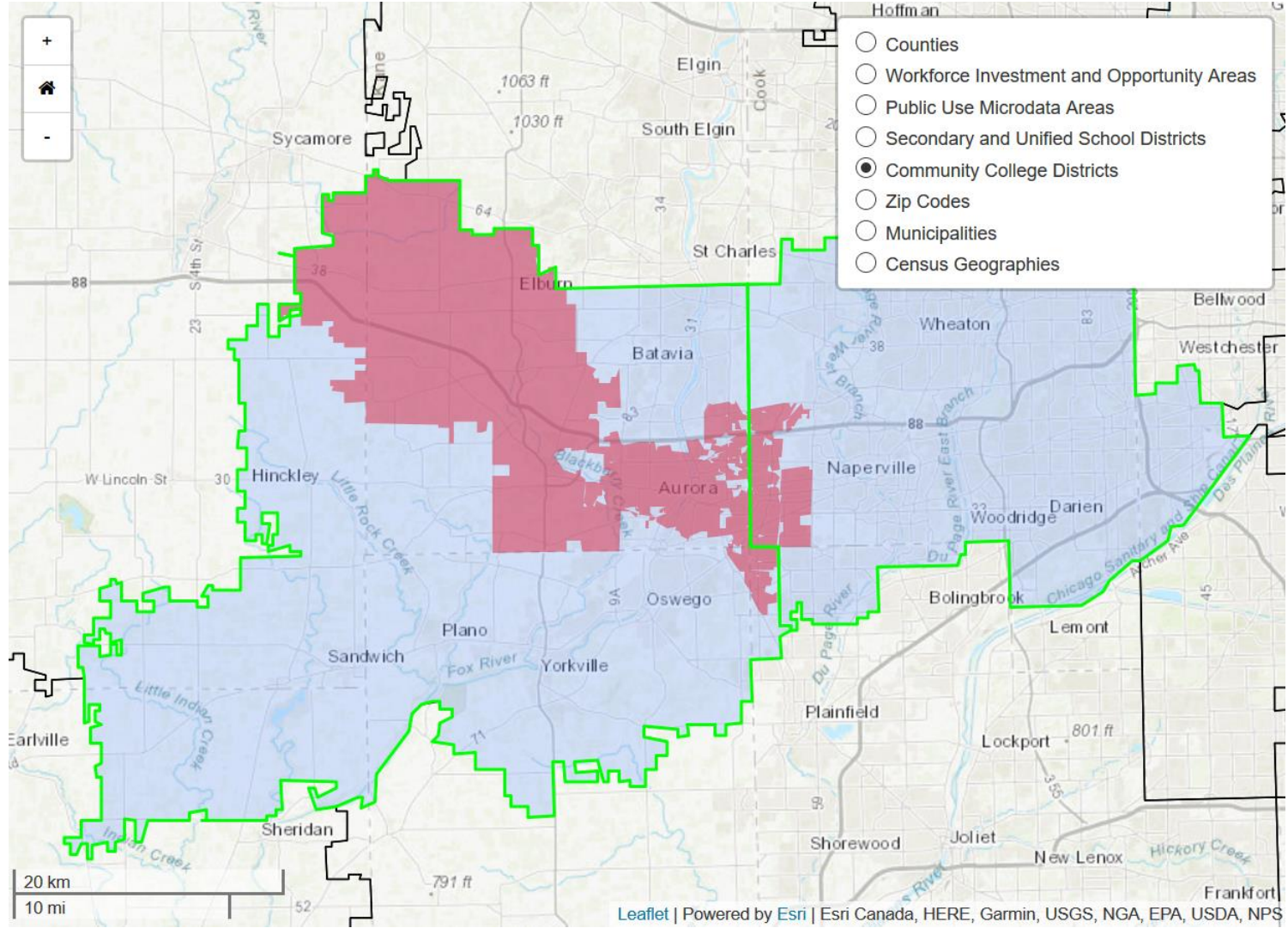
- Enrollment
- Completions

SUGGESTIONS FOR NEW DATA OR INDICATORS?

crosemond@niu.edu



DATA DISAGGREGATION



ADDITIONAL LEVELS OF DISAGGREGATION



USER EXPERIENCE DESIGN REFRESH

FALL 2018 ENGAGEMENT

COLLABORATIVE

Cradle to Career Community Dashboard

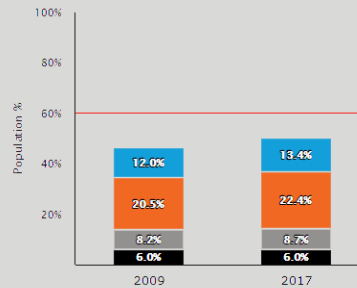
- The Cradle to Career Community Dashboards are a Resource for 60 by 25 Network Leadership Communities to:
- * Analyze regional information on education and workforce system characteristics and performance
 - * Track progress on postsecondary education attainment and education-to-career objectives
 - * Benchmark community efforts against state averages

Illinois Data

Lorem Ipsum is simply dummy text of the printing and typesetting industry. Lorem Ipsum has been the industry's standard dummy text ever since the 1500s, when an unknown printer took a galley of type and scrambled it to make a type specimen book. It has survived not only five centuries, but also the leap into electronic typesetting, remaining essentially unchanged. It was popularised in the 1960s with the release of Letraset sheets containing Lorem Ipsum passages, and more recently with desktop publishing software like Aldus PageMaker including versions of Lorem Ipsum.

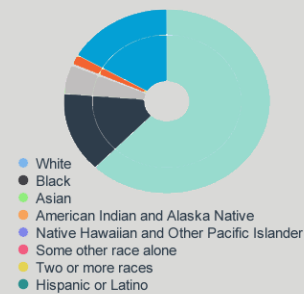
It is a long established fact that a reader will be distracted by the readable content of a page when looking at its layout. The point of using Lorem Ipsum is that it has a more-or-less normal distribution of letters, as opposed to using 'Content here, content here', making it look like readable English. Many desktop publishing packages and web page editors now use Lorem Ipsum as their default model text, and a search for 'lorem ipsum' will uncover many web sites still in their infancy. Various versions have evolved over the years, sometimes by accident, sometimes on purpose (injected humour and the like).

Education Attainment: 25-64 Years of Age
Source: U.S. Census Bureau



[Learn More](#)

Race/Ethnicity
Source: U.S. Census Bureau



[Learn More](#)

Illinois Data

Lorem Ipsum is simply dummy text of the printing and typesetting industry. Lorem Ipsum has been the industry's standard dummy text ever since the 1500s, when an unknown printer took a galley of type and scrambled it to make a type specimen book. It has survived not only five centuries, but also the leap into electronic typesetting, remaining essentially unchanged. It was popularised in the 1960s with the release of Letraset sheets containing Lorem Ipsum passages, and more recently with desktop publishing software like Aldus PageMaker including versions of Lorem Ipsum.

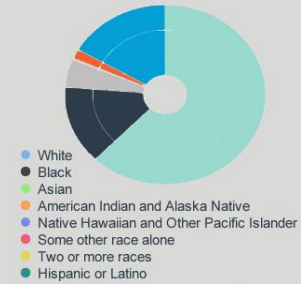
It is a long established fact that a reader will be distracted by the readable content of a page when looking at its layout. The point of using Lorem Ipsum is that it has a more-or-less normal distribution of letters, as opposed to using 'Content here, content here', making it look like readable English. Many desktop publishing packages and web page editors now use Lorem Ipsum as their default model text, and a search for 'lorem ipsum' will uncover many web sites still in their infancy. Various versions have evolved over the years, sometimes by accident, sometimes on purpose (injected humour and the like).

Education Attainment: 25-64 Years of Age
Source: U.S. Census Bureau



[Learn More](#)

Race/Ethnicity
Source: U.S. Census Bureau



[Learn More](#)



Leadership Communities and Regional Collaboratives

There are many variations of passages of Lorem Ipsum available, but the majority have suffered alteration in some form, by injected humour, or randomised words which don't look even slightly believable. If you are going to use a passage of Lorem Ipsum, you need to be sure there isn't anything embarrassing hidden in the middle of text. All the Lorem Ipsum generators on the Internet tend to repeat predefined chunks as necessary, making this the first true generator on the Internet. It uses a dictionary of over 200 Latin words, combined with a handful of model sentence structures, to generate Lorem Ipsum which looks reasonable. The generated Lorem Ipsum is therefore always free from repetition, injected humour, or non-characteristic words etc.

[Learn More](#)

Aurora Regional Pathways to Prosperity

Lorem Ipsum is simply dummy text of the printing and typesetting industry. Lorem Ipsum has been the industry's standard dummy text ever since the 1500s,

Aurora Regional Pathways to Prosperity Dashboard

Community and Labor	▼
Early Childhood	▼
Elementary Through 9th Grade	▼
College Readiness	▼
Supply and Demand	▼

It is a long established fact that a reader will be distracted by the readable content of a page when looking at its layout. The point of using Lorem Ipsum is that it has a more-or-less normal distribution of letters, as opposed to using 'Content here, content here', making it look like readable English. Many desktop publishing packages and web page editors now use Lorem Ipsum as their default model text, and a search for 'lorem ipsum' will uncover many web sites still in their infancy. Various versions have evolved over the years, sometimes by accident, sometimes on purpose (injected humour and the like).



Community Focus Indicators

38.6%

WELL CHILD CARE VISITS



Lorem Ipsum is simply dummy text of the printing and typesetting industry. Lorem Ipsum is simply dummy text of the printing and typesetting industry.

[Learn More](#)

15.4%

FRESHMEN ON TRACK



Lorem Ipsum is simply dummy text of the printing and typesetting industry. Lorem Ipsum is simply dummy text of the printing and typesetting industry.

[Learn More](#)

67.3%

FIVE YEAR GRADUATION



Lorem Ipsum is simply dummy text of the printing and typesetting industry. Lorem Ipsum is simply dummy text of the printing and typesetting industry.

[Learn More](#)

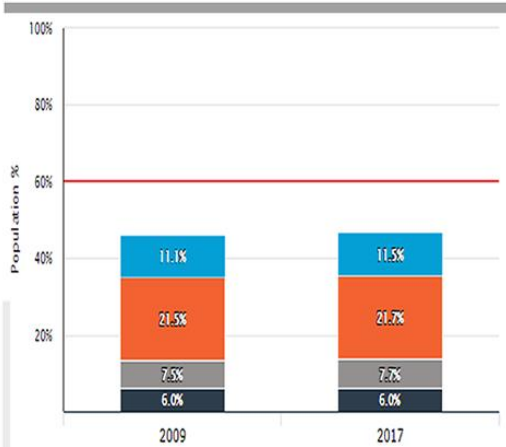
41.9%

POSTSECONDARY ENROLLMENT

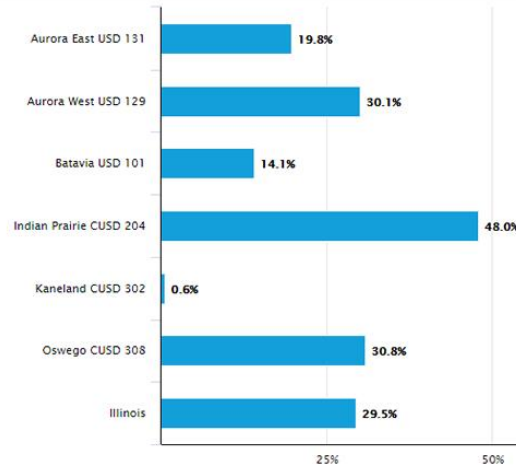


Lorem Ipsum is simply dummy text of the printing and typesetting industry. Lorem Ipsum is simply dummy text of the printing and typesetting industry.

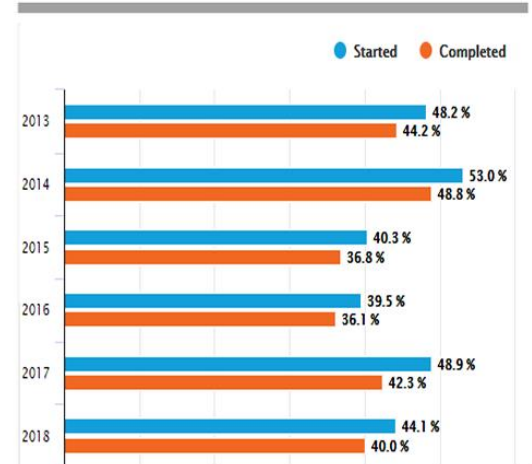
[Learn More](#)



[Learn More](#)

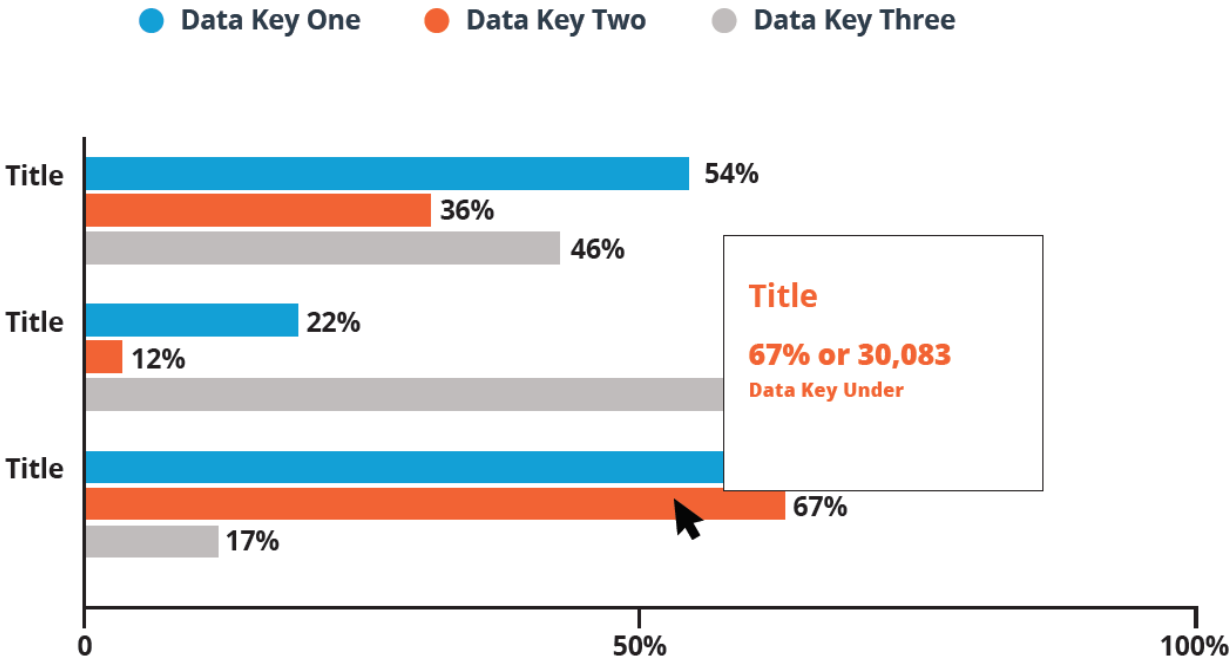


[Learn More](#)



[Learn More](#)

Early Childhood	▼
Elementary Through 9th Grade	▲
3rd, 5th and 8th Grade Proficiency in Reading and Math	
Middle School Students Passing Algebra I	▶
Freshmen on Track	
College Readiness	▼
Community and Labor	▼
Supply and Demand	▼



LEADERSHIP COMMUNITY ENGAGEMENT

2019 ENGAGEMENT OPPORTUNITIES

- **Design roll-out webinars**
 - Network-wide – Spring
 - Community-specific – On request
- **In-person presentations**
- **Online survey**





QUESTIONS? COMMENTS? SUGGESTIONS?

Charlie Rosemond

**Data & Outcomes Manager
Education Systems Center at NIU**

crosemond@niu.edu





dashboard.il60by25.org

THANK YOU
