

60 by 25 NETWORK



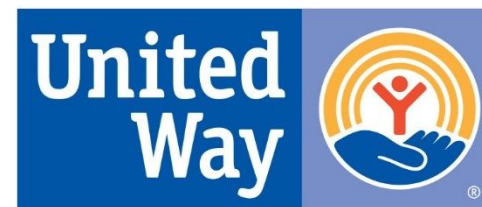
*LESSONS FROM
COLLECTIVE IMPACT IN EARLY CARE AND EDUCATION*

#IL60by25

EARLY CHILDHOOD COLLABORATIONS



AN EDUCATION INITIATIVE OF FOX VALLEY UNITED WAY



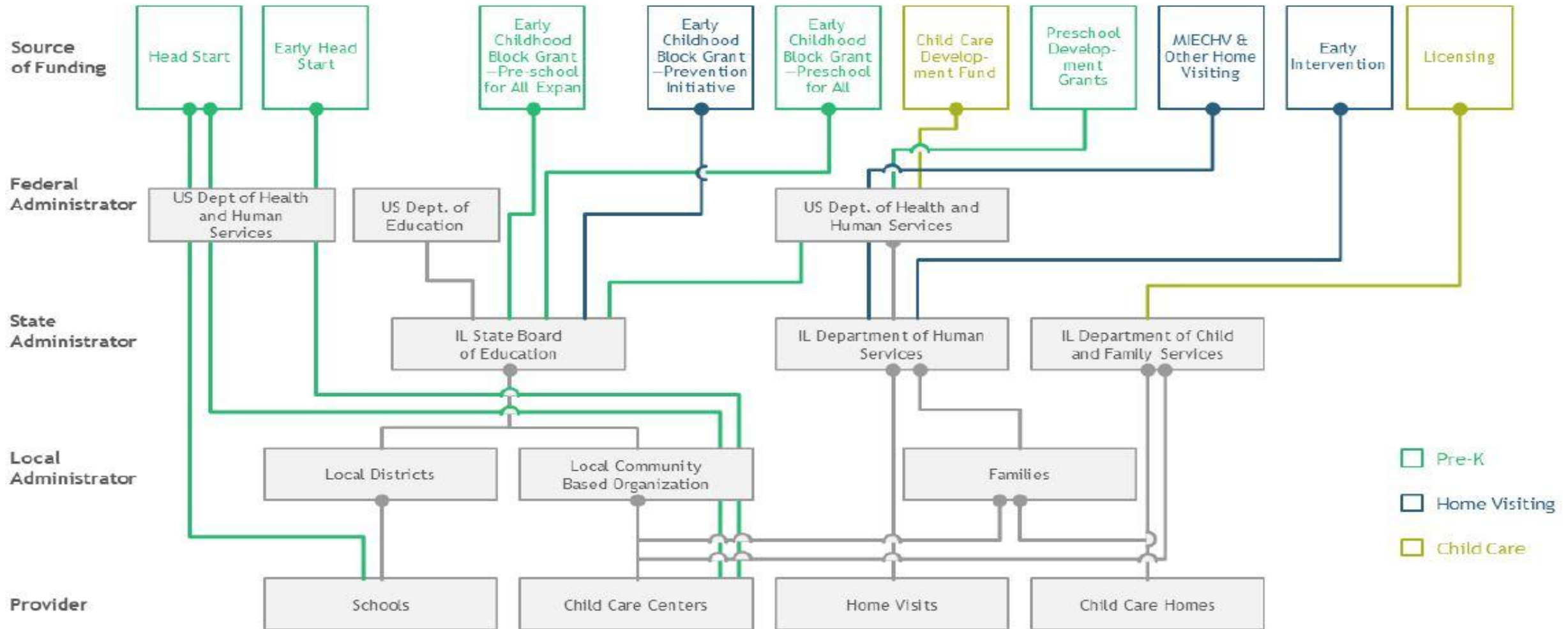
Fox Valley United Way



efforts is learned from Early Childhood collective impact

- View Early Childhood structures that lend themselves to systems change chaos
- Apply knowledge learned to inform your use of collective impact to improve outcomes, cradle to career

Early Childhood System of Chaos



Tackling Complex Social Problems through Collective Impact



Tackling Complex Social Problems through Collective Impact

#IL60by2

5

<https://www.youtube.com/watch?v=pzmMk63ihNM>

The 5 Conditions of Collective Impact

- 1** **Common Agenda**
 - **Common understanding** of the problem
 - **Shared vision** for change
- 2** **Shared Measurement**
 - **Collecting data** and **measuring results**
 - Focus on **performance management**
 - **Shared accountability**
- 3** **Mutually Reinforcing Activities**
 - **Differentiated approaches**
 - **Coordination** through joint plan of action
- 4** **Continuous Communication**
 - **Consistent** and **open communication**
 - Focus on **building trust**
- 5** **Backbone Support**
 - Separate organization(s) with **staff**
 - Resources and skills to **convene** and **coordinate** participating organizations

1

Common Agenda

- Access
- Quality
- Affordability
- Capacity Building
- Sustainability

- **Common understanding** of the problem
- **Shared vision** for change



2

Shared Measurement

- **Collecting data and measuring results**
- **Focus on performance management**
- **Shared accountability**

- Theory of Change – Strategic Plan
- Baseline Data of community conditions
- Concrete benchmarks to measure
- Use the data to inform the work, progress and adaptations
- Impact K-3rd grade



3

Mutually Reinforcing Activities

- Differentiated approaches
- Coordination through joint plan of action



- What's In It For Me
- Community-wide focused approach
- Solution focused – strength based
- Alignment across cradle to career or systems

Collaboration		Collective Impact
Convene around Programs/Initiatives	➔	Work Together to Move Outcomes
Prove	➔	Improve
Addition to What You Do	➔	Is What You Do
Advocate for Ideas	➔	Advocate for What Works

4

Continuous Communication

- **Consistent and open communication**
- **Focus on building trust**

roles

- Focus on building and maintaining trust, relationships, across stakeholders and sectors – value added
- Family-Resident voice – lived experiences are powerful, consider barriers to their participation
- Communicate often in bite size pieces, share struggles AND successes
- Help stakeholders understand systems building-systems change
- Be patient

#IL60by2

5



5

Backbone Support

- Separate organization(s) with **staff**
- Resources and skills to **convene** and **coordinate** participating organizations

- Structure your Collaboration for Systems Change
- Neutrality and a trusted source is critical
- Project management skills, many moving parts
- Ability to facilitate through strong personalities, “turf”, hidden agenda’s, etc. and move to action
- Capacity to be responsive
- Plan for backbone support succession



QUESTIONS

60

by

25

NETWORK

