

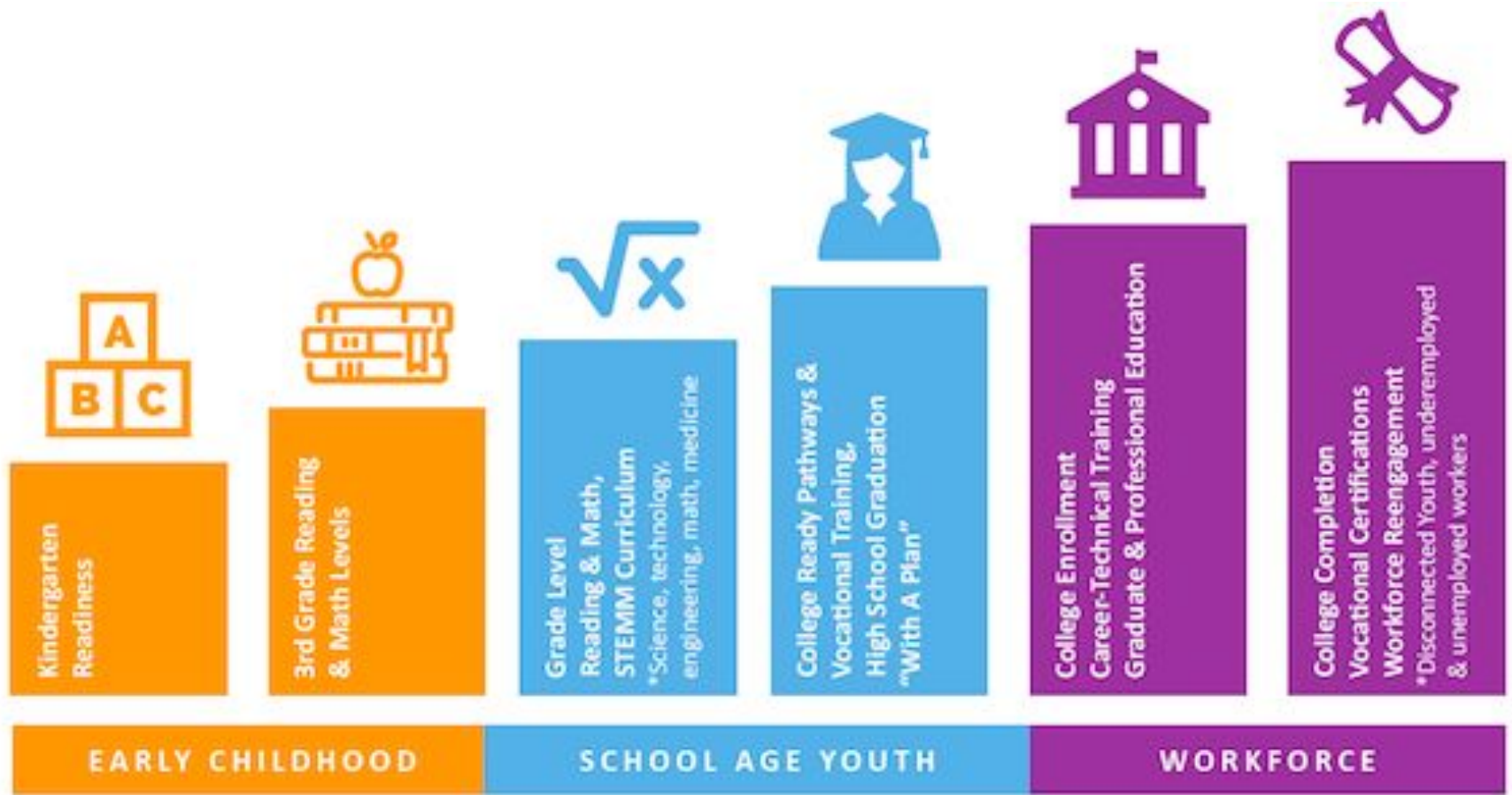
Value-Driven Stakeholder Engagement & Coalition Building

Amber Peters, Executive Director - Elgin Partnership for Early Learning

Nancy Coleman, Executive Director - U-46 Alignment Collaborative for Education

Mary Perkins, Dean of College Transitions and Secondary Partnerships – Elgin Community College & D509 Alliance for College Readiness

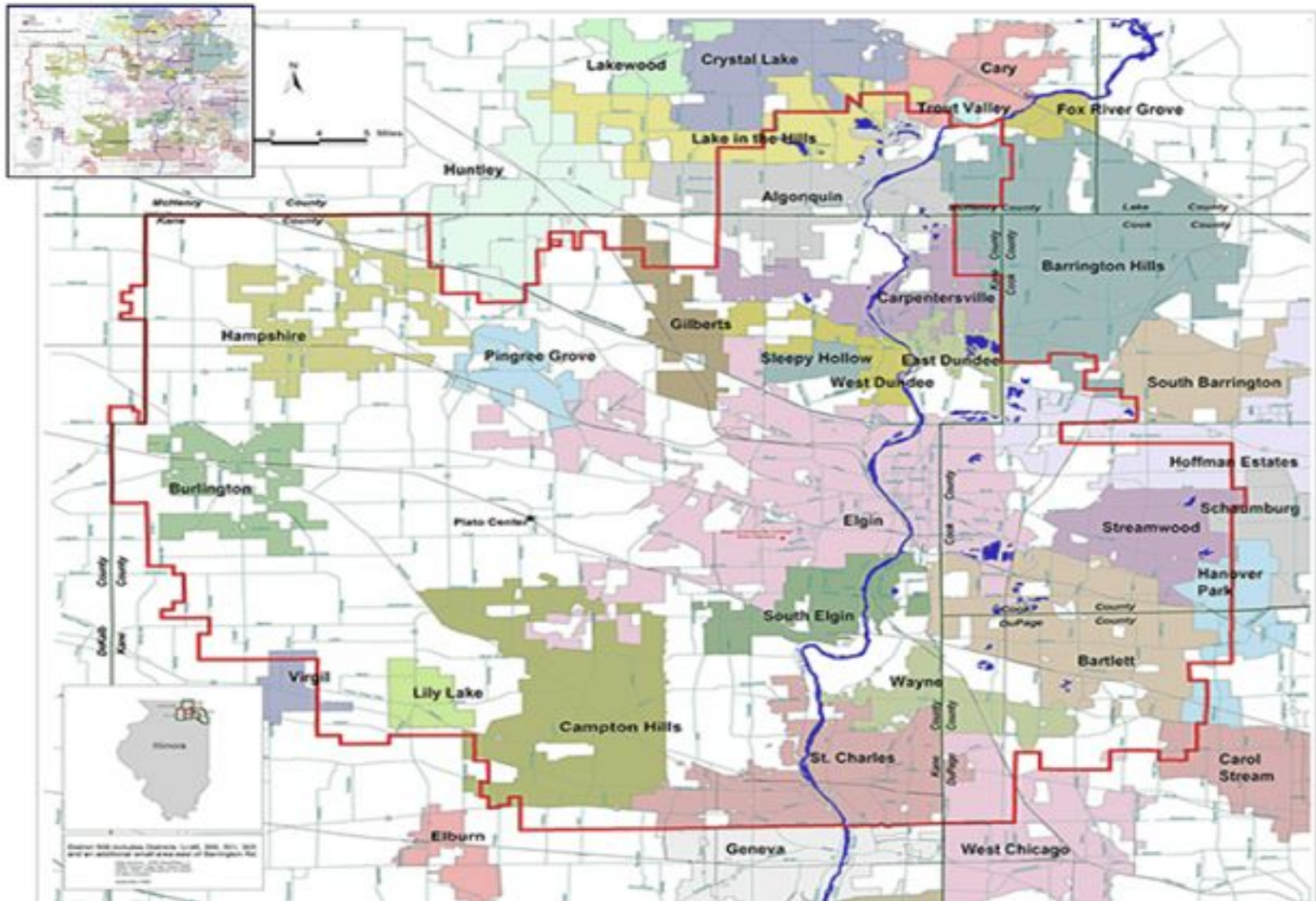
CRADLE TO CAREER College & Career Readiness Model



Elgin
Community
College



REGION SERVED



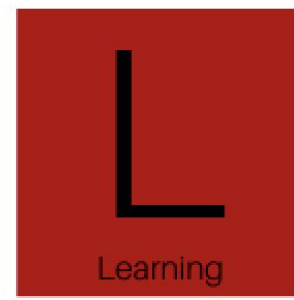
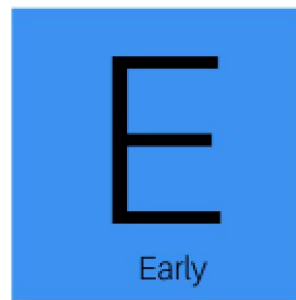
REGIONAL COLLEGE & CAREER READINESS

OVERVIEW OF COLLABORATIONS WITHIN THE ELGIN, ILLINOIS REGION



Elgin
Community
College





It takes the whole community to effectively change the future for our children.

EPEL is a community collaboration that brings together...

- Community Leaders – The Mayor and City Government
- Early Childhood Programs
- Local Stakeholders – Library, Businesses, Health Care, Park District and more
- Community agencies serving families and young children
- School District-U-46

...to work collaboratively to build an early childhood system that will improve outcomes for the community's children.



Elgin

Partnership

Early

Learning



**Collective
Impact Benefit**

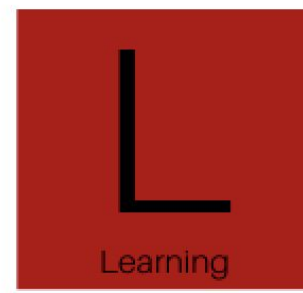
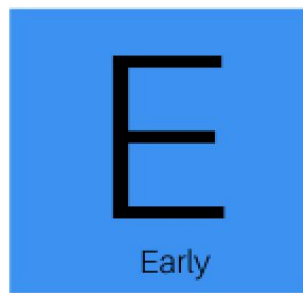
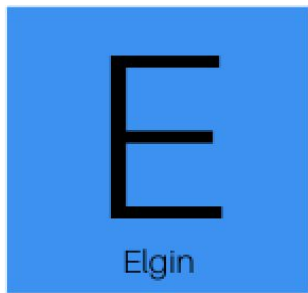


**Engaged
Partners**



**Systemic,
Long-Term Change**

**Building a
connected
community
dedicated to
helping young
children thrive**



How System Building Promotes Cradle to Career?

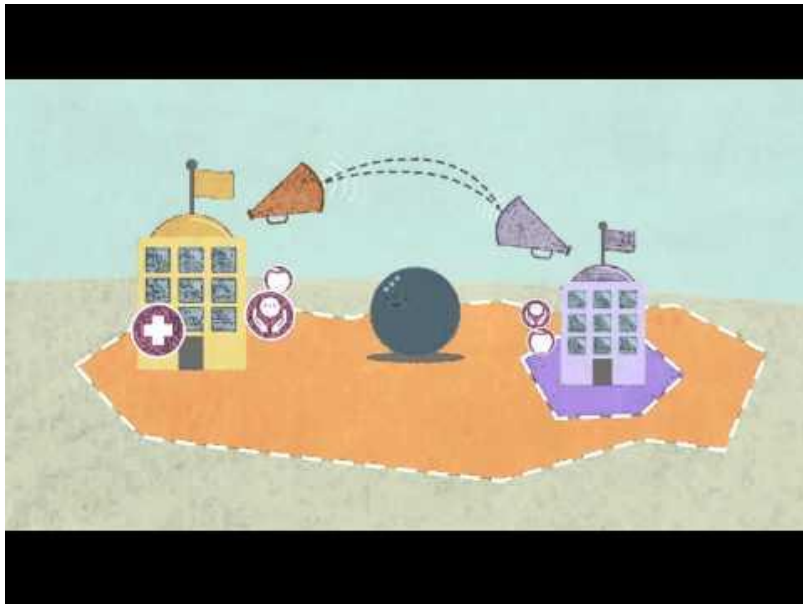
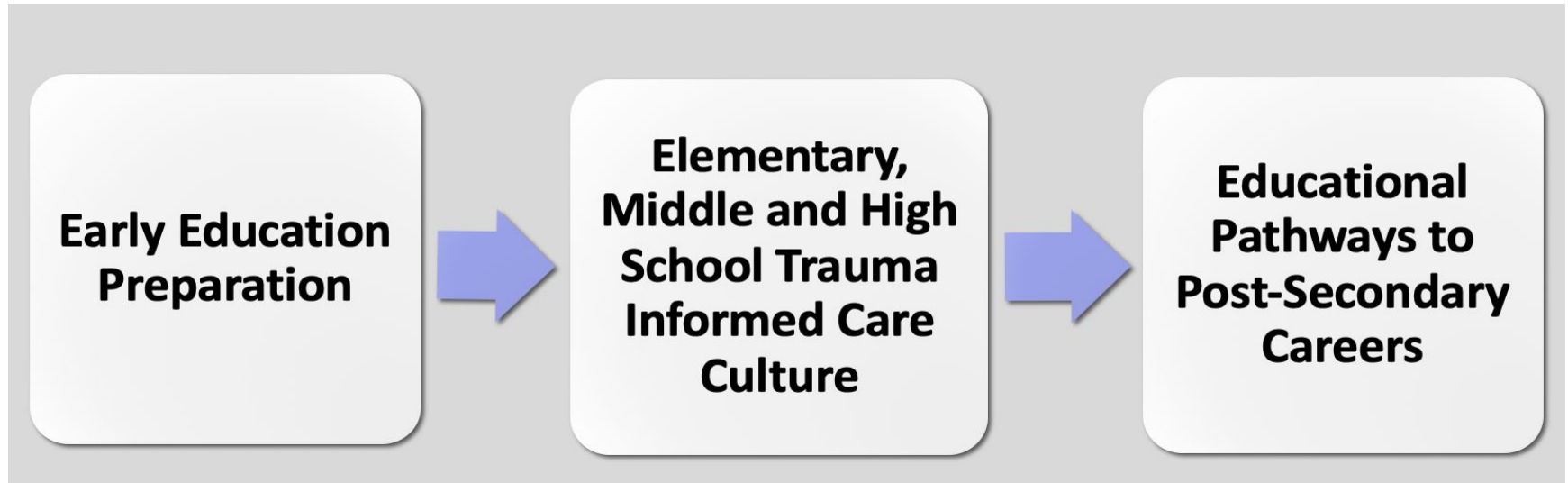


Image borrowed from C2C Fresno County

PRIORITIES



TEAM COMPOSITION

- **Joined by over 150 business and community partners.**
- **Composed of more than 300 volunteers donating 3,200 hours in FY 2019.**
- **Partnering with U-46, the second largest school district in Illinois, to implement educational pathways for 12,000 high school students with the goal that all students graduate academic and career ready.**

WHY COLLECTIVE IMPACT?

- **Needed engagement across 11 communities**
- **Must grow capacity to serve more than 15,000 middle and high school students**
- **Focus on current workforce development challenges to shape future workforce availability and preparedness**



D509 ALLIANCE FOR COLLEGE READINESS

Elgin Community College & Districts 300, 301, 303 & U-46

Established 2006

Initial foci increasing college readiness rates

Legislative impacts

Illinois Postsecondary & Workforce Readiness Act

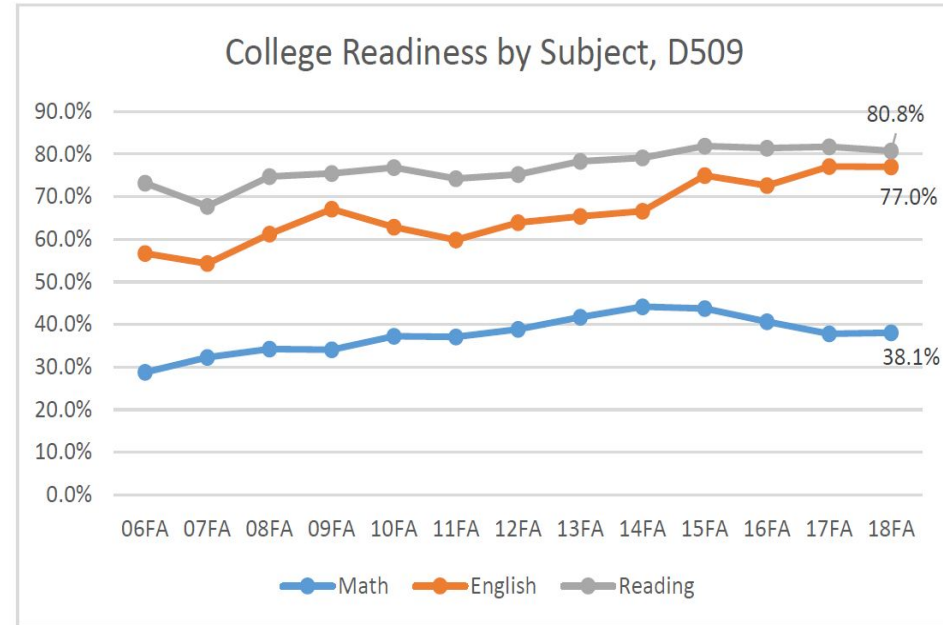
Federal Perkins V Reauthorization

Current areas of focus:

Transitional courses

Dual credit expansion

Career pathway development



Source: Alliance College Readiness Rates, fall 2018

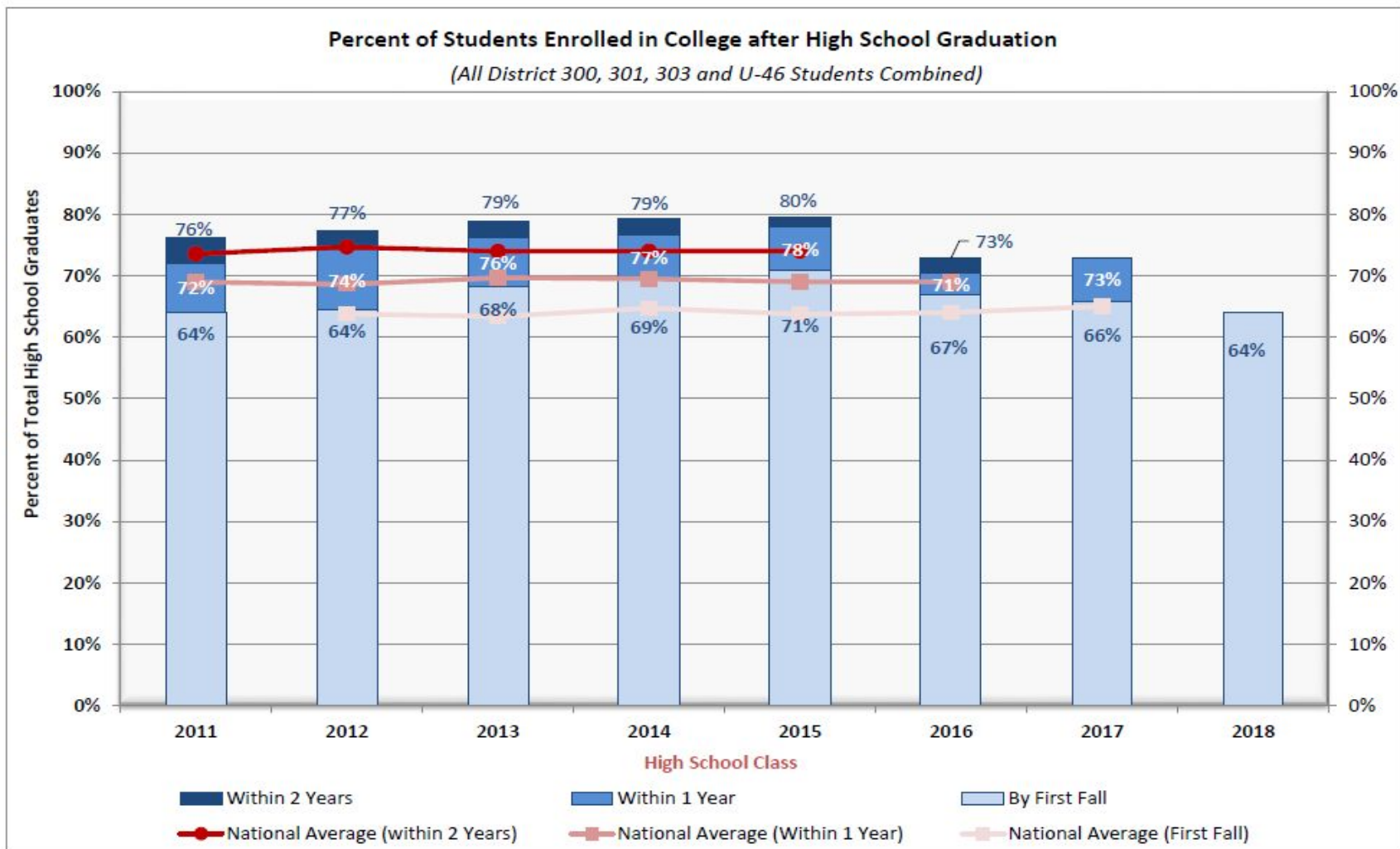
@DrMaryPerk_ECC



Elgin
Community
College



College-Going Rates for All Public High Schools in D509

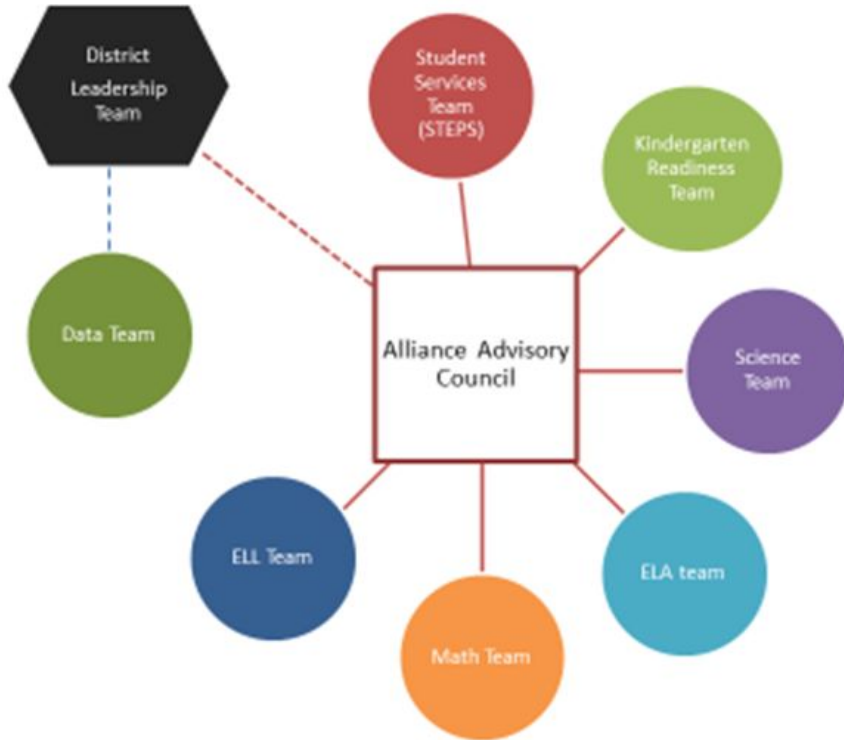


Elgin
Community
College

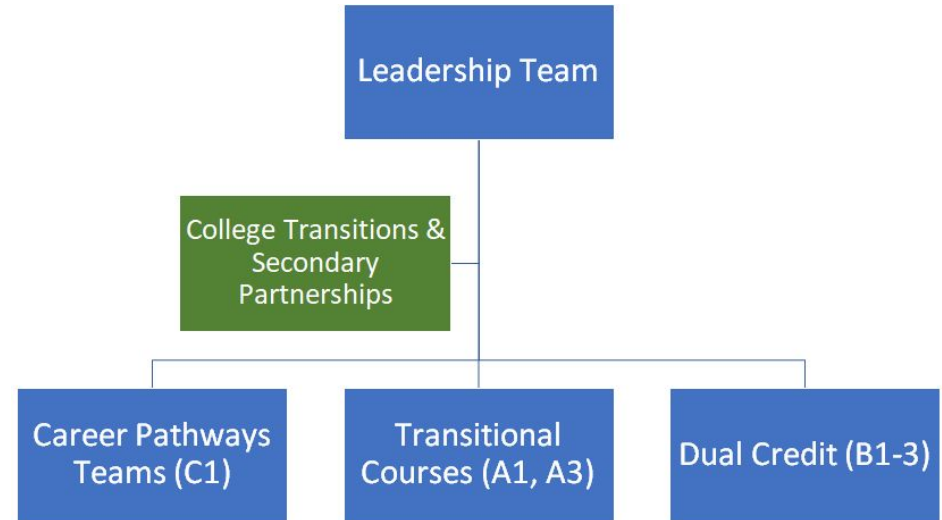


ALLIANCE INFRASTRUCTURES

2006-2017



2018-Present



@DrMaryPerk_ECC

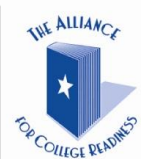


Elgin
Community
College



STAKEHOLDER ENGAGEMENT

PANEL DISCUSSION



#IL60by25

We can only see a SHORT distance ahead,
but we can see
PLENTY
there that needs to be done.





THANK YOU
