

Piloting Career Exploration and Career Development Experiences

Resources & Insights from Illinois Communities

Who's Here Today?

Please write your name, title, and organization in the chat

The session is being recorded and will be shared out with the presentation

Please mute computers and/or phones when not sharing with the group

Unmute yourself or use the chat to provide any comments or questions

Today's Session

- Overview of pilot grant opportunity from the Illinois State Board of Education (ISBE)
- Pilot Community Presentations
 - Career Exploration
 - Elm Middle School
 - Career Development Experiences
 - Northern Kane County Regional Vocational System
- Illinois Work-based Learning Resources

Illinois' WBL Continuum

CONTINUUM OF EMPLOYER ENGAGEMENT & WORK-BASED LEARNING EXPERIENCES



Career Exploration

From the [Illinois Career Pathways Dictionary](#):

An activity such as a job shadow, attendance at a career exposition, or employer site visit providing an individual with the ability to **engage directly with employers**, for the purpose of gaining knowledge of one or more industry sectors or occupations

Career Development Experience (CDE)

A supervised work experience relating to an individual's career area of interest that:

- 1) Occurs in a workplace or under other authentic working conditions;
- 2) Is co-developed by an education provider and at least one employer in the relevant field;
- 3) Provides compensation or educational credit to the participant;
- 4) Reinforces foundational professional skills including, at a minimum, those outlined in the Essential Employability Skills framework;
- 5) Includes a Professional Skills Assessment that assesses skill development and is utilized as a participant feedback tool; and
- 6) Takes place for a minimum of 60 total hours.

Overview of ISBE Pilot Grant



EQUITY FIRST: BUILDING TOWARD A BETTER FUTURE AND REVITALIZING LEARNING



Career Exploration and Career Development Experience Grant Pilot

- Awarded about \$1.5 million
- 173 school districts in Illinois
 - To develop and improve work-based learning experiences for students
 - Identify, create, improve, and expand work-based learning resources that will be shared statewide



Purpose of the grant

Identify and develop innovative resources Illinois needs to promote Career Exploration and Career Development Experiences

- What are we lacking? Does COVID recovery change our students' needs? How can we provide more equitable access?

Development of a statewide resource bank to be released in June 2022

- Documentation of best practices, models and lessons learned from pilot schools will be used to develop a resource bank of innovative models, resources and templates that can be adapted and utilized statewide for implementing Career Exploration and Career Development Experiences



Communities of Practice

Strategic guidance and technical assistance for implementation of Career Exploration and Career Development Experiences through professional development and community of practice sessions with EFEs and pilot schools.

- Content covered and resources shared during these sessions reflect the implementation needs and questions expressed by EFEs and pilot schools.



Timeline of Engagements

Time Period	Event
August 2021	Kickoff with EFEs and representatives from pilot schools
October 2021	Community of practice for EFEs and pilot schools
December 2021	Community of practice for EFEs and pilot schools
February 2022	Community of practice for EFEs and pilot schools
April 2022	Community of practice showcase for EFEs and pilot schools to present on their pilot experience (best practices, lessons learned, resources developed, and insights) <i>This showcase will be open to communities outside of the pilot</i>

Pilot Community Presentations



EQUITY FIRST: BUILDING TOWARD A BETTER FUTURE AND REVITALIZING LEARNING



6th-8th Grade



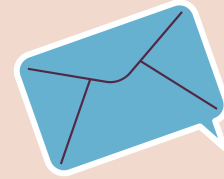
ELM MIDDLE SCHOOL

College & Career Pathways



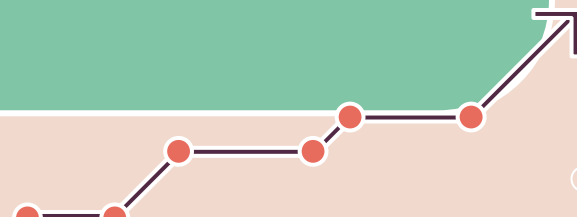
Dr. Leah Gauthier
Dr. Kimberly Ontiveros
Mrs. Ashley Groeneveld

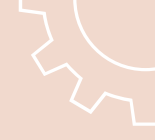





EPCUSD 401 College & Career Pathway Initiative

Through pathway exploration, aligned programs of study and experience-based learning opportunities, students will graduate with well-developed post-secondary plans and a diverse set of skills suited for academic and career success.



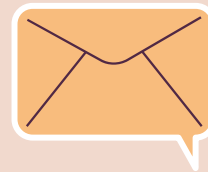


College & Career Pathways in EPSCUD 401: What is it?




Elm Middle School

Starting at Elm Middle School, students explore a variety of interests aligned to future careers.



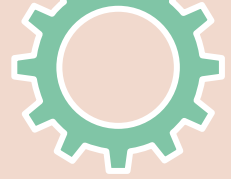
Elmwood Park High School

As students enter EPHS, they continue with coursework opportunities that focus in greater depth on college and career pathways of interest to them. [EPHS Pathways](#)





District 401's Program



Student interest surveys delivered to gather interest for programming

Step 1

All students take part in the course selection process.

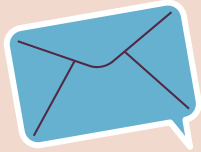
Step 3

Step 2

Career Study courses are created based on survey information relating to the 16 career clusters

Step 4

The middle school currently offers 7 electives correlating to the 16 career clusters and will be adding 2 more in the 2022-2023 school year.



Sixteen Career Clusters

Agriculture, Food, & Natural Resources	Education & Training	Hospitality & Tourism	Manufacturing
Architecture & Construction	Finance	Human Services	Marketing, Sales & Service
Arts, A/V Technology & Communications	Government & Public Administration	Information Technology	Science, Technology, Engineering & Mathematics
Business Management & Administration	Health Science	Law, Public Safety, Corrections & Security	Transportation, Distribution & Logistics



Elm Career Study Offerings 2022-2023

Psychology

Human Services

Entrepreneurship

*Business Management &
Administration*

Game Design

*Science, Technology, Engineering &
Mathematics*

Hospitality & Tourism

Hospitality & Tourism

Sociology

Human Services

Creative Writing

Education & Training

Business

Business Management & Administration

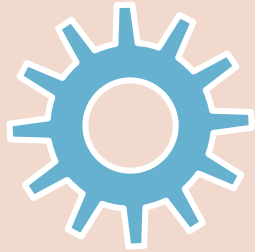
****Health Science**

Health Science

****Architecture**

Architecture & Construction

Career Electives



Exposure

Each course is 1 trimester long



Low Stakes

Courses are pass/fail which allows students a low-risk opportunity to explore new areas of interest



Variety

Students have the opportunity to take 9 different courses throughout their time at EMS



Long Term Benefit

Students benefit from this exploration because it provides an opportunity to explore different pathways before making a post-secondary commitment

Transitioning to High School

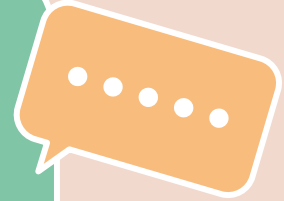
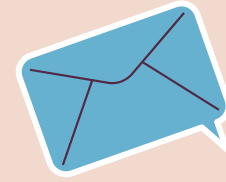
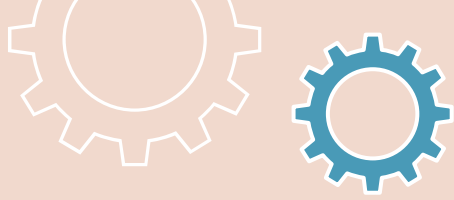
01

Once at high school, students will be able to explore individual pathways based on their interests.

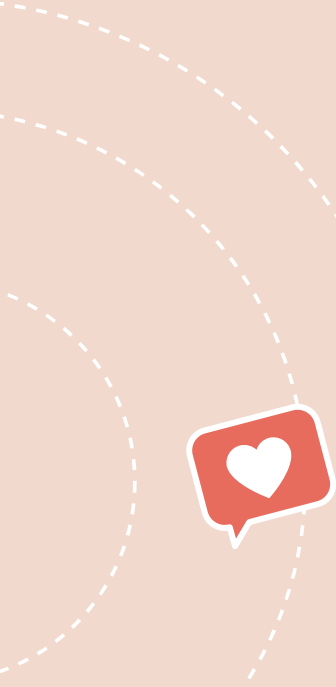
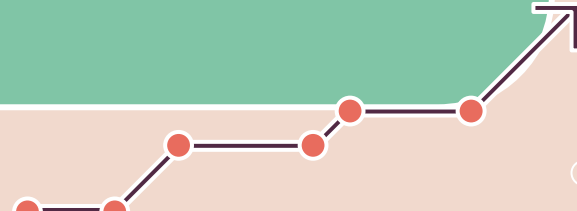
02

Students are exposed to both college preparatory courses and vocational training opportunities based on their interests as they move through high school.





College & Career Pathway Video





THANKS!

Do you have any questions?
gauthierl@epcusd401.org
ontiveroski@epcusd401.org
groenevelda@epcusd401.org



**EQUITY
FIRST**

**Northern Kane County
Regional Vocational
System EFE 110**

Career Development Grant Project

Why Career Development?

2020

Perkins
Data

Metric	Regional Score	Benchmark for 2022
4 yr. Graduation Rate	96.72	95.4
Extended Graduation Rate	96.74	95.4
ELA Proficiency	36.61	38.6
Math Proficiency	39.32	37.6
Science Proficiency	42.79	39.9
Non-traditional Program	38.39	40.3
Post Secondary Credits	1.88	31.2
Work Based Learning	4.44	7.0

Work Based Learning

District	School	Total Students	Students in WBL	% in WBL	Students needed to Meet
D300	Dundee Crown	2560	107/100	4%	179
	Hampshire	1757	89/81	5%/4.6%	123
	Jacobs	2043	93/95	4.6%/4.7%	143
D301	Central	1240	0/0	0%	87
D303	East	2405	114/12	4.7%/.5%	168
	North	1972	0/0	0%	138
U46	Bartlett	2399	33/31	1.4%	168
	Elgin	2567	0/0	0%	180
	Larkin	2036	13/12	0.6%	143
	South Elgin	2717	6/6	0.2%	190
	Streamwood	1818	32/24	1.8%/1.3%	127

The Haves and Have nots'

- Data showed that our low socioeconomic schools had the lowest percentage of WBL
- Students were unwilling to leave their paid part time jobs to participate in an unpaid internship

Two Tiered Approach

- Work Based Learning classes (Co-Op)
 - Automotive Dealerships
 - Automotive Repair Shops
 - Manufacturers
 - Welding Shops
- Work Based Learning built into curriculum (Credit from ISBE for these)
 - Automotive
 - Culinary
 - Business Incubator
 - Veterinary Science

Co-Op vs. WBL

- Worked with business partners and community organizations to develop a new program
 - Structure of System
 - Timeline of Pilot Program
 - Business Partner Development
 - Application for Students
- Presented to our Administrative Council in February 2021
- Using grant money to pay for student internship experiences

Additional Supports

- Purchased Scrubs for students in our CNA program to use while out on site
- Purchased tool sets for automotive students to use on site
- Visited high school classes to talk with students about opportunities
- Working to give students coaching on soft skills
- We will be working to offer training for our counselors on the program

Back-up Plan

Regional Competition Night

- Culinary “Chopped” Competition
- Welding
- Manufacturing (Display of TMA competition pieces)
- Automotive
- Business Incubator “Pitch Night”

State Frameworks & Resources for WBL



[Link to I-WIN Resource Hub](#)



I-WIN

Illinois Work-Based Learning
Innovation Network

[Subscribe to the I-WIN Newsletter!](#)



Highlight and explore innovative models for work-based learning, initial focus on virtual



Engage in conversations on creating sustainable, high-quality models that provide broader and more equitable access, with a focus on building social capital for Black and Latinx students

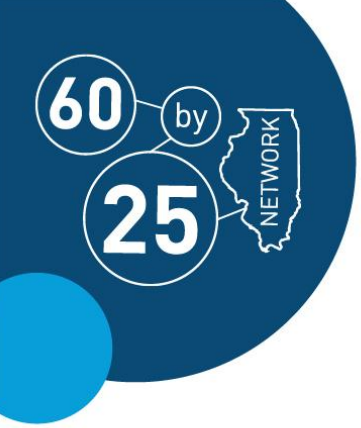


Build connections among communities to share best practices, learnings and resources



Identify needs for state policy changes or support systems





Thank you!

